

**2013 American**

# **Belgian Blue**

**Breeders Journal**



**[www.belgianblue.org](http://www.belgianblue.org)**



# Stone Farms

**4th Gen Blk  
Belgian Blue**



**Zip is a fourth generation black, and we will be collecting him soon. Zip is an elite pedigree bull.**



**Curly our lowline Angus bull.**

**Our beef is a cross between lowline angus which have been selected for their marbling and their tenderness, and the blues which have the highest dressing percentage of any breed. The cross produces calves that need no hormones and very little concentrated feed to finish them out for beef.**

**We will have bulls and heifers for sale from 4 different bulls. They will be fullbloods to percentages.**

## **Stone Farms**

**Stephen and Sheala Stone  
3840 West Grandview Rd.  
Salem, IN 47167**

**Email [stoneclydes@aol.com](mailto:stoneclydes@aol.com)**

**Web [stonefarmsllc.com](http://stonefarmsllc.com)**

**Ph. 812-896-2603 or  
812-896-4518**



# Belgian Blue Cattle



**FULLBLOOD • PUREBRED • PERCENTAGE  
BREEDING STOCK AVAILABLE**

*Quality  
Genetics*

**Steve Dollarhide  
Haworth, Oklahoma  
Phone: 580-245-2370  
Cell: 870-648-6546  
Email: [stevedollarhide@yahoo.com](mailto:stevedollarhide@yahoo.com)  
[www.srbelgianbluecattle.com](http://www.srbelgianbluecattle.com)**

*Specializing  
in  
Black*



# SCHLICHTE CATTLE CO.

**"Home of Champions"**

Offering fullbloods, crossbreds, semen and healthy meat.



*Time Won't Forget  
In memory of Ken Schlichte,  
our True Champion*

## Schlichte Cattle Co.

Home of Champions.

25014 K42

Merrill, Iowa 51038

slickcattleco@gmail.com

bs.cindy@gmail.com

712-540-2639

## Table of Contents

2012 National Show, Tulsa.....	4-9
Benefits of Crossbreeding..	9
Scenes from 2012 Tulsa..	10
'13 Tulsa Show Agenda..	12
2012 Jr. Champion.....	13
What is the Importance of Browning Meat?.....	14
Cooking Belgian Blue Beef.....	14
Premier Breeder.....	15
Premier Cow.....	15
Premier Bull.....	15
Application.....	16
Estimating the Price of Beef.....	17
2012 Iowa State Fair.....	21-24
Scholarship.....	24
Jr. Members Benefits.....	25
Membership Directory.....	28-33

## Advertisers

Black Gold Belgians.....	26
Confer Tel.....	13
Elmcrest Genetics/Kehrli Kattle .....	18-19
Internation Assoc.....	36
Jones Cattle Co./Belle.....	
Brook Farms..Ins Bk Cov	
JSH Blues.....	11
Keesee Farms.....	3
Kountry Blues.....	35
La Gantoise, Inc.....	27
MNP Farm.....	34
Schlichte Cattle Co.....	2
SR Belgian Blue Cattle.....	1
Stone Farms.. Ins Frt Cover	
Tudor Oak Farms..Bk Cov	

## On the Cover

Featured on the cover are halfbloods.

Pictured on the left top is the dam, 1/2 Belgian Blue and 1/2 Gelbvieh. The blue roan calf is 3/4 Belgian Blue.

The photo on the left bottom, the dam is a Gelbvieh and the dark brown calf is 1/2 Belgian Blue and 1/2 Gelvieh. These photos were provided by MNP Farm, Fair Grove, MO.

Pictured on the right is Tyler Garcia with a steer that is 1/2 Belgian Blue and 1/2 Simmental. The steer is owned by Charles Weddle, Edmond, OK.



# KEESEE FARMS

## Belgian Blue Cattle



### For Sale

Bulls & Heifers

$\frac{1}{4}$  Breeds to  
Fullbloods

Semen Available



James & Mary Keesee  
870-699-4498

Steve & Tammy Keesee  
870-699-4606

215 Peach Street  
Prattsville, AR 72129  
Email: [kzcountry@hotmail.com](mailto:kzcountry@hotmail.com)



# 2012 National Show Results

## 2012 TULSA STATE FAIR SHOW September 29, 2012

Judges: Jean Marie Wilmet of Belgium  
Marie Goubau of Canada

### SHOWMANSHIP

1. Katelyn Mellon
2. Jenel Wendt
3. Slade Dollarhide

### STEERS

*Prospect Low & Steer Halfblood or under 400-900 lbs*

1. SKSL Steer 4Z, Steve Kinser, Hugoton, KS
2. SKSL Steer 3Z, Steve Kinser, Hugoton, KS

### GRAND CHAMPION

*Prospect Low % Steer*

SKSL Steer 4Z, Steve Kinser,  
Hugoton, KS

### RESERVE GRAND CHAMPION

*Prospect Low % Steer*

SKSL Steer 3Z, Steve Kinser,  
Hugoton, KS

*Market Low % Steers ½ Blood or Under – Over 900 lb.*

1. Babe, Charles Weddle, Edmond, OK

### GRAND CHAMPION

*Market Low % Steer*

Babe, Charles Weddle, Edmond, OK

*Market High % Steers –*

*Over ½, Less than 7/8 Over 900 lbs*

1. EGKK Sunshine, Jenel Wenndt,  
Lowden, IA

### GRAND CHAMPION

*Market High % Steer*

EGKK Sunshine, Jenel Wenndt,  
Lowden, IA

### FEMALES

*Halfblood Female –*

*Feb 1st 2012 & After*

1. 67 Sieren's Zephph, Glena Sieren,  
Hedrick, IA

### CHAMPION

*Halfblood Calf*

67 Sieren's Zephph, Glena Sieren,  
Hedrick, IA

*Halfblood Females –*

*June 1 – September 30, 2011*

1. RKF Jezebel, Katelyn Mellon,  
Dover, AR
2. Blue Sky, Logan Beckham, Elkland,  
MO

*Halfblood Female –*

*February 1 – May 31, 2011*

1. SKSL Lancer's Little Lady  
Steve Kinser, Hugoton, KS

*Halfblood Female –*

*October 1 – January 31, 2011*

1. BGB Penny, Lane Hull, Ardmore, OK

### CHAMPION

*Halfblood Yearling Female*

SKSL Lancer's Little Lady  
Steve Kinser, Hugoton, KS

### RESERVE CHAMPION

*Halfblood Yearling Female*

RKF Jezebel, Katelyn Mellon,  
Dover, AR

### GRAND CHAMPION

*Halfblood Female*

SKSL Lancer's Little Lady  
Steve Kinser, Hugoton, KS

### RESERVE GRAND CHAMPION

*Halfblood Female*

67 Sieren's Zephph, Glena Sieren,  
Hedrick, IA



# 2012 National Show Results

## *High % Female -*

### *February 1, 2012 & After*

1. SKSL Prima Dona 29Z, Steve Kinser, Hugoton, KS
2. Sieren's Zsa Zsa, Glenda Sieren, Hedrick, IA
3. BGB Bonnie, Lane Hull, Ardmore, OK

## **CHAMPION**

### *High % Calf*

SKSL Prima Dona 29Z, Steve Kinser, Hugoton, KS

## **RESERVE CHAMPION**

### *High % Calf*

Sieren's Zsa Zsa, Glenda Sieren, Hedrick, IA

## *High % Females -*

### *October 1, 2009 – January 31, 2010*

1. Blue Tru, Logan Beckham, Elkland, MO

## **CHAMPION**

### *High % Senior Female*

Blue Tru, Logan Beckham, Elkland, MO

## **GRAND CHAMPION**

### *High % Female*

Blue Tru, Logan Beckham, Elkland, MO

## **RESERVE GRAND CHAMPION**

### *High % Female*

SKSL Prima Dona 29Z, Steve Kinser, Hugoton, KS

## *Purebred/Fullblood Female –*

### *February 1, 2012 & After*

1. Sieren's Zany Glenda Sieren, Hedrick, IA
2. Sieren's Ziggy Glenda Sieren, Hedrick IA

## *Purebred/Fullblood Female –*

### *October 1, 2011 – January 31, 2012*

1. DeShazo's Lou Lou, Shirley Deshazo, Bokoshe, OK

2. JSH Eclipse ET, James Hunt, Walnut Grove, MO

3. Jones' Zoe ET, C. Stanley Jones, Nacogdoches, TX

## **CHAMPION**

### *Purebred/Fullblood Calf*

DeShazo's Lou Lou, Shirley Deshazo, Bokoshe, OK

## **RESERVE CHAMPION**

### *Purebred/Fullblood Calf*

JSH Eclipse ET, James Hunt, Walnut Grove, MO

## *Purebred/Fullblood Female –*

### *June 1, 2011 – September 30, 2011*

1. SRD Black Magic Woman, Lane Hull, Ardmore, OK

## **CHAMPION**

### *Purebred/Fullblood Yearling Female*

SRD Black Magic Woman, Lane Hull, Ardmore, OK

## *Purebred/Fullblood Females -*

### *October 1, 2009 – September 30, 2010*

1. JSH Long Tall Sally ET, James Hunt, Walnut Grove, MO
2. JSH BeeGee ET, James Hunt, Walnut Grove, MO
3. Jones' X's & O's

## *Purebred/Fullblood Females –*

### *September 30, 2009 or before*

1. Blue Ice, Rachel Dollarhide, Haworth, OK

## **CHAMPION**

### *Purebred Senior Female*

JSH Long Tall Sally ET, James Hunt, Walnut Grove, MO

## **RESERVE CHAMPION**

### *Purebred Senior Female*

JSH BeeGee ET, James Hunt, Walnut Grove, MO



# 2012 National Show Results

## GRAND CHAMPION

### *Purebred/Fullblood Female*

JSH Long Tall Sally James & Sharon  
Hunt, Walnut Grove MO

## RESERVE GRAND CHAMPION

### *Purebred/Fullblood Female*

DeShazo's Lou Lou, Shirley Deshazo,  
Bokoshe, OK

## BULLS

### *Halfblood Bulls*

#### *February 1, - May 31, 2011*

1. SKSL Granite Lancer37, Steve Kinser, Hugoton, KS
2. WCM Yukon, Wayne Matlock, Bixby, OK
3. KF Oscar, Stephen Names, Sheridan, AR

## CHAMPION

### *Halfblood Yearling Bull*

SKSL Granite Lancer37, Steve Kinser,  
Hugoton, KS

## RESERVE CHAMPION

### *Halfblood Yearling Bull*

WCM Yukon, Wayne Matlock,  
Bixby, OK

## GRAND CHAMPION

### *Halfblood Yearling Bull*

SKSL Granite Lancer37, Steve Kinser,  
Hugoton, KS

## RESERVE GRAND CHAMPION

### *Halfblood Yearling Bull*

WCM Yukon, Wayne Matlock,  
Bixby, OK

### *Percentage Bulls –*

#### *February 1, 2012 & After*

1. BGB Clyde, Lane Hull, Ardmore, OK
2. Sieren's Zeke, Glenda Sieren, Hedrick, IA

## CHAMPION

### *Percentage Bull Calf*

BGB Clyde, Lane Hull, Ardmore, OK

## RESERVE CHAMPION

### *Percentage Bull Calf*

Sieren's Zeke, Glenda Sieren,  
Hedrick, IA

### *Percentage Bulls –*

#### *June 1 – Sept. 30, 2011*

1. MNP Blue Dynamo Jess, Connie Brooks, Fair Grove, MO

### *Percentage Bulls –*

#### *Feb. 1 – May 31, 2011*

1. Sieren's Yosemite Sam, Glenda Sieren Hedrick, IA

## CHAMPION

### *Percentage Yearling Bull*

MNP Blue Dynamo Jess, Connie Brooks,  
Fair Grove, MO

## RESERVE CHAMPION

### *Percentage Senior Bull*

Sieren's Yosemite Sam, Glenda Sieren,  
Hedrick, IA

### *Percentage Bulls –*

#### *Oct. 1, 2009 – Sept. 30, 2010*

1. JSH Little Bubba, Katelyn Mellon, Dover, AR

### *Percentage Bulls –*

#### *Sept. 30, 2009 or before*

1. Thunder LKM9W, Stephen Names, Sheridan, AR

## CHAMPION

### *Percentage Senior Bull*

Thunder LKM9W, Stephen Names,  
Sheridan, AR

## RESERVE CHAMPION

### *Percentage Senior Bull*

JSH Little Bubba, Katelyn Mellon,  
Dover, AR

## GRAND CHAMPION

### *Percentage Bull*

MNP Blue Dynamo Jess, Connie Brooks,  
Fair Grove, MO

# 2012 National Show Results

## RESERVE GRAND CHAMPION

### *Percentage Bull*

Thunder LKM9W, Stephen Names, Sheridan, AR

### *Purebred/Fullblood Bulls –*

#### *February 1, 2012 & After*

1. SRD Pretty Boy, Steve Dollarhide, Haworth OK

### *Purebred/Fullblood Bulls –*

#### *October 1, 2011 – January 31, 2012*

1. SRD Black Smoke, Slade Dollarhide, Haworth, OK
2. SRD Sherry Silver Dollar, Sherry Nix Elgin, OK
3. Jones' Ultra Fit's Yellow Jac, C. Stanley Jones, Nacogdoches TX

## CHAMPION

### *Purebred/Fullblood Bull Calf*

SRD Pretty Boy, Steve Dollarhide, Haworth OK

## RESERVE CHAMPION

### *Purebred/Fullblood Bull Calf*

SRD Black Smoke, Slade Dollarhide, Haworth, OK

### *Purebred/Fullblood Bulls –*

#### *February 1, 2011 – May 31, 2011*

1. Schlichte's TK Grunt, Glenda Sieren, Hedrick IA
2. SRD Black Diamond, Lane Hulll, Ardmore, OK

### *Purebred/Fullblood Bulls –*

#### *Oct. 1, 2010 – January 31, 2011*

1. Jones' X-Man ET, C. Stanley Jones, Nacogdoches TX

## CHAMPION

### *Purebred/Fullblood Yearling Bull*

Schlichte's TK Grunt, Glenda Sieren, Hedrick IA

## RESERVE CHAMPION

### *Purebred/Fullblood Yearling Bull*

SRD Black Diamond, Lane Hulll, Ardmore, OK

### *Purebred/Fullblood Bulls –*

#### *September 30, 2009 or before*

1. DeShazo's Tonka, Shirley Deshazo, Bokshe OK

## CHAMPION

### *Purebred/Fullblood Senior Bull*

DeShazo's Tonka, Shirley Deshazo, Bokshe OK

## GRAND CHAMPION

### *Purebred/Fullblood Bull*

Schlichte's TK Grunt, Glenda Sieren, Hedrick IA

## RESERVE GRAND CHAMPION

### *Purebred/Fullblood Bull*

DeShazo's Tonka, Shirley Deshazo, Bokshe OK

### *Best Pair of Females*

1. James Hunt, Walnut Grove, MO
2. Glenda Sieren, Hedrick, IA
3. James Hunt

### *Best Pair of Bulls*

1. Stephen Names, Sheridan, AR
2. Slade Dollarhide, Haworth, OK
3. C. Stanley Jones, Nacogdoches, TX

### *Get - Of - Sire*

1. James Hunt, Walnut Grove, MO
2. Glenda Sieren Hedrick, IA

### *Produce of Dam*

1. C. Stanley Jones, Nacogdoches, TX
2. James Hunt, Walnut Grove, MO
3. Lane Hull, Ardmore, OK

### *Best of 5 Head*

1. James & Sharon Hunt Walnut Grove, MO
2. Glenda Sieren Hedrick, IA



# 2012 National Show Results



**GRAND CHAMPION**  
**Purebred/Fullblood Female**  
**& CHAMPION**  
**Purebred Senior Female**  
**JSH Long Tall Sally ET**  
**James & Sharon Hunt**



**RESERVE GRAND CHAMPION & CHAMPION**  
**High % Calf**  
**SKSL Prima Dona 29Z**  
**Steve Kinser**



**GRAND CHAMPION & CHAMPION**  
**Halfblood Female**  
**SKSL Lancer's Little Lady**  
**Steve Kinser**



**GRAND CHAMPION & CHAMPION**  
**Halfblood Yearling Bull**  
**SKSL Granite Lancer37**  
**Steve Kinser**



**RESERVE GRAND CHAMPION**  
**& RESERVE CHAMPION**  
**Halfblood Yearling Bull**  
**WCM Yukon**  
**Wayne Matlock**



**CHAMPION**  
**Purebred/Fullblood Bull Calf**  
**SRD Pretty Boy**  
**Steve Dollarhide**

# 2012 National Show Results



**RESERVE CHAMPION**  
**Purebred/Fullblood Bull Calf**  
**SRD Black Smoke**  
**Slade Dollarhide**



**Purebred/Fullblood Females –**  
**September 30, 2009 or before**  
**Blue Ice, Rachel Dollarhide**



**GRAND CHAMPION & CHAMPION**  
**Percentage Bull**  
**MNP Blue Dynamo Jess**  
**Connie Brooks**

## *Benefits of Crossbreeding*

Beef producers have been benefiting when using a Belgian Blue bull as a terminal cross sire. Belgian Blue crossbred calves result in increased carcass yield as compared to the dam. The Belgian Blue bull will put more weight and muscle on the calves' frames.

Butchers will also pay premium prices for both steers and heifers knowing there will be a high yield and more saleable beef.

Overall benefits of crossbreeding:

- High growth rates
- Early turnoff
- Outstanding feed conversion rates
- Outstanding dress percentages 60% +
- High yield
- Market preferred
- Butcher preferred
- Premium prices

Ref. [www.belgianblues.com.au](http://www.belgianblues.com.au)



# Scenes from 2012 National Show



# JSH BLUES

**Fullblood Cattle • Percentage Cattle  
Embryos • Project Calves**



**Jim & Sharon Hunt**

**5354 S. 20th Road**

**Walnut Grove, MO 65770**

**Home: 417-694-8207**

**Mobile: 417-399-2906**

**E-Mail: [jshblues@netscape.com](mailto:jshblues@netscape.com)**

**[www.jshblues.com](http://www.jshblues.com)**

**FOR SALE: FULLBLOOD AND PERCENTAGE  
BULLS, HEIFERS AND FEEDER STEERS**



**European and American Genetics  
Colors from White to Blue to Black**

**"WE CAN HELP YOU WITH THE VERY  
BEST BEEF YOU WILL EVER EAT."**



# **2013 TULSA STATE FAIR:**

Entry Deadline: August 26, 2013. Entries must be submitted online at  
**www.tulsastatefair.com** *Tulsa, Oklahoma*

- Begin Arrival: Wednesday, September 25, 12:00 noon.
- In Place By: Thursday, September 26, 12:00 noon.
- Judging: Friday, September 27, 6:00 P.M.
- Begin Release: Staged Release on Sunday, September 29.
- All Out: Sunday, September 29, 10:00 P.M.
- Processing Fee: \$45 per head.

## **Annual Membership Meeting:**

*TSF Grounds Show -Saturday September 28, 10 A.M.*

**Awards Dinner and Benefit Auction** Banquet and auction to be held at the  
Western Sizzler 6510 E. 21st Street *Saturday, September 28th 7 P.M.*

**Rooms Available:** \*We have a block of rooms reserved at the  
Courtyard Tulsa: 3340 South 79th East Avenue Tulsa, OK 74145  
Phone: 918-660-0646

- Rooms are under **The American Belgian Blue Breeders Association.**
- All rooms are double with a rate of 89.00 plus tax per night.
- Please call at your earliest convenience to reserve your room.
- Rooms will be held until 9/4/2013, at this time all rooms will be released and reservations will be taken on a first come first served basis only.
- If you need assistance please ask for Eileen Mendoza.

\*A block of rooms have been reserved at  
Comfort Inn 918-628-0900. \$64.99 plus tax.  
Rooms will be held until 9/18/2013



## 2012 JUNIOR CHAMPION Jenel Wenndt

Jenel Wenndt is the daughter of Jeff and Deb Wenndt from Lowden Iowa. She is currently a senior at North Cedar High School in Stanwood, Iowa. Jenel has a great devotion for her cattle and has her own herd of Red Angus and Limousin stock cows and raises show calves. Most of her stock is from the heifers she has previously shown. Between her activities and ball games, Jenel spends most of her spare time in the show barn working with her animals. Those who have seen Jenel at the fair or at any show; can see her calves have a true bond with her. She was introduced to the Belgian Blues by Adam Horman and has a great passion for showing them. Last year she was honored to be awarded the 2012 Junior Belgian Blue Champion.

Jenel has been showing cattle since she was 4 years old, starting with the bucket bottle calves and by the time she was 7 she was showing on the IJBBA Circuit. She is a member of the Lowden Lasers 4H Club where she shows cattle, swine, and helps her friends show sheep.

*Last year was a great year for me showing the Blues, my calf Arthur and I did very well. I am sad this year that I could not find a Belgian Blue steer to show. I am hoping to locate one next year to show. I want to thank Connie Brooks, Adam Horman, and Glenda Sieren for all their support! I also want to thank all the members for the great award I received! Thanks, Jenel*

Powered by



ClearValue Conferencing

### Toll-Free Audio Conferencing



**Features You Need  
Quality You Expect  
Service You Deserve**

Dear Members,

We are pleased to announce we have partnered with ConferTel, a leading conferencing service provider. If you are you are looking for easy to use, low-cost phone conferencing provider, ConferTel's 24/7, on-demand and reservationless ExpressAttendant provides just the solution.

Some of the features include:

- **Online account management**
- **Visual attendance monitoring**
- **Optional billing codes and custom greetings**
- **Record, replay and transcription**

This service, already used by thousands of businesses worldwide, will help you manage calls with professionalism.

Ready to start? [Follow this link to begin using a reliable, easy-to-use, multimedia conferencing solution](#) anytime, anywhere.

Regards,

**American Belgian Blue Breeders**  
(936) 652-2550  
[www.belgianblue.org](http://www.belgianblue.org)



## *What is the Importance of Browning Meat?*

Did you ever wonder why so many recipes say to brown the meat? Have you ever watched the cooking shows on television as they scrape the pan for all the “brown bits”? Some claim that, that’s where the flavor is.

For the most part that is correct. When cooking meat, chemical reactions occur known as the Maillard reactions. What happens is the amino acids react with the sugars in the food breaking down the dull molecules into smell and taste. It is the Maillard reaction that also causes the meat to brown.

Maillard reactions generally only occur above 285 degrees Fahrenheit. Meat has relatively little flavor until these Maillard reactions occur. When braising meat or cooking in a stew, the temperature of the pot will never get higher than boiling, 212 degrees. The Maillard reactions can’t take place. This is why most recipes say to brown the meat on all sides before adding to the stew.

A slow cooked roast at a low temperature will not set off the Maillard reaction. To set off the reaction, the temperature should be raised in the last 15 or 20 minutes of cooking. This will help the roast to brown and develop the flavor. Cutting the meat in smaller pieces will also allow more surface area to be exposed and produce more of the Maillard reactions.

Those “brown bits” on the bottom of the pan do have a lot of flavor and will make wonder gravy.

## *Cooking Belgian Blue Beef*

When cooking Belgian Blue meat it is imperative that you DO NOT OVER COOK IT! Because the Belgian Blue beef is leaner and healthier than any other beef on the market today it is easy to over cook and cook out the natural juices. Overcooking is the most common mistake in preparing steak. This is especially important with Belgian Blue steaks because the muscle fiber is much finer than our domestic cattle that have been bred for marbling (more fat within the layers of meat). The ideal Belgian Blue steak is rare to medium for optimum flavor and juiciness.

When grilling cook over medium coals at normal rack height, but shorten cooking time. Turn the steaks a few minutes sooner (1/3 less time) and check for doneness.

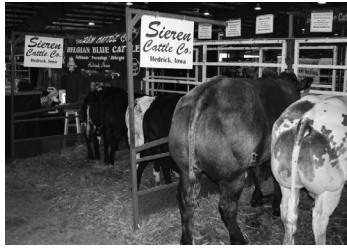
If roasting, set oven temperature to 250-275 degrees and use a meat thermometer to check for doneness at 120 -140 degrees. At this lower temperature, your roast should take the same amount of time as ordinary beef that is cooked at a higher temperature.

For broiling move your rack farther away from the heat source. Broil as ordinary beef, but shorten the cooking time. Turn the steak a few minutes sooner and check for doneness.

Flavorful Belgian Blue beef is all natural, lean and tender and half the fat of standard beef as well as less than a chicken breast in cholesterol and fat content!

## **2012 Premier Breeder - Sieren Cattle Co. Glenda Sieren - Hedrick, Iowa**

The title of 2012 Premier Breeder was earned by Sieren Cattle Co. which is owned and operated by Glenda Sieren of Hedrick, Iowa. Glenda first saw the Belgian Blue breed displayed at the Iowa State Fair in 1994. She could see the potential for a lean beef business and so began her interest in the breed. Her search for quality genetics took her to the Ken and Cindy Schlichte farm in northwest Iowa where she purchased her first two fullblood heifers in 1997.



Several champion bulls and heifers have been raised and shown by Sieren Cattle Co. at the Iowa State Fair, Tulsa State Fair, Houston Livestock Show, and Ozark Empire Fair. Semen and embryos sales are also part of the business.

Sieren Cattle Company is very honored to have received this award.

## **2012 Premier Cow - JSH Long Tall Sally ET**

The Premier Cow for 2012 was JSH Long Tall Sally ET. She is owned and exhibited by Jim and Sharon Hunt of JSH Blues in Walnut Grove, Missouri. The Hunts are very proud of Sally for her second year in a row as Premier Cow. Sally was an imported embryo from Belgium to add some new bloodlines for JSH Blues. Her sire is Radar Van Terbeck and her Dam is Splendeur V. Gelin-den. She has Galopeur Des Hayons as her Grand-Sire. She is registered ELITE status.



Sally placed second in her class at Iowa State Fair in 2012 ( being nudged by the Hunts other Senior Fullblood Cow) and ultimately Reserve Grand Champion Senior Fullblood Female. She also won in Best Pair of Females and Best Pen of Five. She then continued to place 1st in her individual classes at the National Show at the Tulsa State Fair in 2012 to become National Grand Champion Fullblood Female and ultimately Premier Cow.

JSH Blues collected some top embryos for the future and they now have a bull calf on the ground from Sally and their National Grand Champion Bull, JSH DJ D'Ochain. Now Sally is an important part of their Fullblood herd. Sally had her first calf in 2013 and the Hunts are looking forward to selecting a top bull to breed her to for her first Fullblood calf later this year. Who knows, maybe a future showing in Cow/Calf classes?

## **2012 Premier Bull - Schlichte's TK Grunt**

The Premier Bull for 2012 was Schlichte's TK Grunt. The sire is SCH Dakota's Lakota and the dam is Schlichte's B.B.U.

A very thick muscular Belgian Blue bull, Grunt was purchased and shown in memory of Ken Schlichte.



*Rules for Premier Breeder, Premier Bull and Premier Cow are listed on our website: [www.belgianblue.org](http://www.belgianblue.org).*

American Belgian Blue Breeders, Inc.  
Application For Membership



P.O. Box 633404  
Nacogdoches, TX 75963  
936.652.25501  
www.belgianblue.org

---

Applicant Name: \_\_\_\_\_

Ranch Name: \_\_\_\_\_

Address: \_\_\_\_\_

City: \_\_\_\_\_ State: \_\_\_\_\_ Zip: \_\_\_\_\_

Residence Phone: \_\_\_\_\_ Business Phone: \_\_\_\_\_ Fax: \_\_\_\_\_

Email: \_\_\_\_\_ Web Site: \_\_\_\_\_

Signature Of Applicant: \_\_\_\_\_

---

### Membership Choices

Please Choose One + RANCH REGISTRATION if you would like to register cattle

_____	Lifetime Membership	\$2,500.00	(No Annual Fees)			
_____	Active Membership	\$60.00	(Owner of Cattle - Voting Privileges)			
_____	Junior Membership	\$35.00	(Must Be Under 21)			
	Birth date Required for Junior Membership					
_____	Ranch Registration	\$25.00	(One Time Fee – for members wishing to register cattle)			
	Include 3 Choices for Ranch Prefix (3-4 letters)		<table border="1"><tr><td></td><td></td><td></td></tr></table>			

---

Remittance of \$ \_\_\_\_\_ is enclosed for Membership fee and/or Ranch Registration.  
(\*\* New members, please remember to include the **Ranch Registration** fee if you wish to register cattle.)

---

Return Completed Form and Payment to:

**American Belgian Blue Breeders, Inc.**  
P.O. Box 633404  
Nacogdoches, TX 75963

*Application will not be processed until full payment is received.*



## *Estimating the Price of Beef*

The weight of a side of beef as it hangs in the meat cooler is referred to as “hanging weight.” The meat was purchased from a meat packer on a hanging weight basis by the butcher, and he also sells it to the consumer that way.

Excess fat is removed during cutting and the carcass fatness will affect how much take-home meat a side of beef will yield. Not all beef are the same and some will be fatter than other sides of beef. The information below explains this further.

### **YIELD FROM A VERY LEAN, CHOICE 300 LB. SIDE**

Fat & bone (waste) 15%

Usable meat cuts 225 lb.

Take-home meat 85%

Belgian Blue beef would fall in this category of lean and choice. The Belgian Blue beef is the complete answer for health conscious consumers. The meat is extremely lean with low marbling. With increasing demands for high protein and low cholesterol high quality meat, Belgian Blue beef is the choice.

There are also higher amounts of prime cuts since there is less trim and waste because of lower fat content.

### **YIELD FROM AN AVERAGE, CHOICE 300 LB. SIDE**

Fat & bone (waste) 30%

Usable meat cuts 210 lb.

Take-home meat 70%

### **YIELD FROM A VERY FAT, CHOICE 300 LB. SIDE**

Fat & bone (waste) 45%

Usable meat cuts 165 lb.

Take-home meat 55%

The previous illustrations are for Choice sides of beef and are most commonly available from yield grades 2, 3, and 4. The highest quality grade of Prime is most commonly available from yield grades 3, 4, and 5. The lower quality of Select is most commonly available from yield grades 1, 2, and 3. Standard, lower in quality than Good, is most commonly available from yield grades 1 and 2.

Beef sold at hanging weight will lose some of its weight in the cutting and trimming process no matter how lean it is. The amount of fat and bone that must be trimmed (cutting loss) from a side will have an influence on the price per pound of meat that is finally wrapped and frozen for you.

Ask your butcher to explain to you how to figure the approximate price per pound of meat you will take home. Remember, this is only an approximate and will vary with how you want your beef trimmed and boned.

### **TAKE-HOME MEAT PRICE**

To find the approximate cost per pound of cut and wrapped meat, divide the price per pound “hanging weight” by the percent take-home meat.

**Example:** Side of beef is quoted at \$1.30 per lb. “hanging weight” and the take home meat is 70% the approximate cost per lb. of the cut and wrapped meat is \$1.86 per lb.

Reference: Richard J. Epley,  
University of Minnesota Extension



# Elmcrest Genetics

E  
K



## PALMER

15 years old and the final piece to the puzzle of Americanized Blue Cattle.

*Our goals at Elmcrest Genetics and Kehrli Kattle are:*

- 1) *Raise and share Americanized Belgian Blue genetics with our customers.*
- 2) *Produce more saleable meat on every carcass to help feed our ever growing population*
- 3) *Produce more profit for our customers who are raising this beef.*
- 4) *Raise a product that is tender, tasty, lean and healthy for you.*

*Give us a call at (563) 920-8494...we love to talk about the Blues!*



**Heifer, Fullblood**

**Elmcrest Genetics**  
*Wilbur Kehrli*  
**(563) 920-8494**



## RIDGEDE

6 generations o

Born naturally from t  
Belgian Blue bro



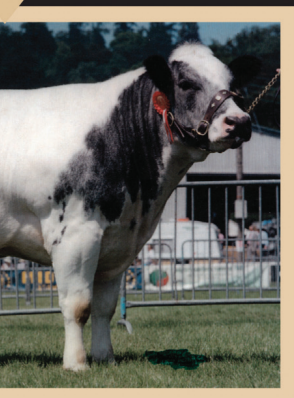
## REGAL I

Daughter of Ri  
7th generationo

**www.kehrl**

G  
&  
K

# Kehrli Kattle



## EDGEGEAN JESSIE

of natural calving!  
the herd of the premier  
breeder in England.



## LADY ET

Edgedean Jessie.  
of natural calving!

[ifarms.com](http://ifarms.com)

**FULL BLOOD BULLS & HEIFERS  
SEMEN & EMBRYOS  
AVAILABLE!**

### *Our Mission Statement*

*To serve our customers and the Belgian  
Blue Family more effectively than anyone  
else by treating our customers, fellow  
breeders and consumers as we personally  
would like to be treated.*



**Bull Calf, Fullblood  
New Jr. Herd Sire**

**Kehrli Kattle**  
*Kyle Kehrli*  
**(319) 521-7135**



# 2012 Iowa State Fair Show Results



**Champion**  
**High Percentage Market Steer**  
**Egkk Sunshine**  
**Jenel Wenndt**



**Grand Champion Cow**  
**JSH BeeGee-ET**  
**Jim and Sharon Hunt**



**Champion**  
**Fullblood Yearling Heifer**  
**Sieren's Yvette**  
**Sieren Cattle Co.**



**Champion**  
**Fullblood Heifer Calf**  
**Sieren's Zany**  
**Sieren Cattle Co.**



**Grand Champion**  
**Fullblood Bull**  
**Schlichte's TK Grunt**  
**Sieren Cattle Co.**



**Reserve Champion**  
**High Percentage Bull**  
**Sieren's Zeke**  
**Sieren Cattle Co.**

# 2012 Iowa State Fair Show Results



**Grand Champion  
High Percentage Female  
Sieren's Zsa Zsa  
Sieren Cattle Co.**



**Grand Champion  
High Percentage Bull  
Sieren's Yosemite Sam  
Sieren Cattle Co.**



**Reserve Champion  
Purebred/Fullblood Cow/Calf  
JSH BEEGEE ET  
JSH Blues**



**Reserve Grand Champion  
Low Percentage Female  
Sieren's Zoe  
Sieren Cattle Co.**



**Champion  
Low Percentage Yearling Heifer  
RKF Jezebel  
Katelyn Mellon**



**Reserve Champion  
High Percentage Senior Bull  
JSH Little Bubba  
Katelyn Mellon**

**American Belgian Blue - 21**

# 2012 Iowa State Fair Show Results

## **Grand Champion**

### ***Purebred/Fullblood Female***

JSH Long Tall Sally

James & Sharon Hunt, Walnut Grove MO

## ***High Percentage Senior Bull Calf –***

### ***Sept. 1 to Dec. 31, 2011***

1. Kountry Blues, Stanley,

Keefer LKM7Y, 9/3/2011, 5270

## **Champion**

### ***Purebred/Fullblood Senior Female***

JSH Blues, Walnut Grove, Mo.,

JSH BEEGEE ET

## ***High Percentage Summer Yearling Bull --***

### ***May 1 to Aug. 31, 2011***

1. Kountry Blues, Stanley,

KEEFER LKM7Y, 9/3/2011, 5270

## ***High Percentage Market Steers -- Born in 2011***

1. Jenel Wenndt, Lowden,

Egkk Sunshine, 4/8/2011, 5233

## ***High Percentage Junior Yearling Bull – Jan. 1 to April 30, 2011***

1. Sieren Cattle Co., Hedrick,

SIE Yosemite Sam, 4/8/2011, 5210

## ***Low Percentage Junior Heifer Calf***

### ***Jan. 1, 2012 or After***

1. Sieren Cattle Co., Hedrick,

Sieren's Zoe, 4/9/2012

## ***High Percentage Senior Bull –***

### ***Aug. 31, 2010 or Before***

1. Katelyn Mellon, Dover, Ark.,

JSH Little Bubba, 5/12/2010, 5190

## ***Low Percentage Summer Yearling Heifer***

### ***– May 1 to Aug. 31, 2011***

1. Katelyn Mellon, Dover, Ark.,

RKF Jezzebelle, 7/12/2011, 5356

## ***PB/FB Junior Heifer Calf –***

### ***Jan. 1, 2012 or After***

1. Sieren Cattle Co., Hedrick, Sieren's  
Zany, 4/17/2012

## ***Low Percentage Junior Heifer Calf –***

### ***Jan. 1, 2012 or After***

1. Sieren Cattle Co., Hedrick,

Sieren's Zoe, 4/9/2012

2. Elmcrest Genetics and Kehrli Kattle,  
Manchester, Palmers Abbie 2, 1/1/2012

3. Elmcrest Genetics and Kehrli Kattle,  
Manchester, Palmers Abbie 2, 1/1/2012

## ***High Percentage Junior Heifer Calf – Jan. 1, 2012 or After***

1. Sieren Cattle Co., Hedrick,

Sieren's Zsa Zsa, 4/27/2012

## ***PB/FB Senior Heifer Calf –***

### ***Sept. 1 to Dec. 31, 2011***

1. Todd Show Cattler, Manchester,

Palmers Troncine, 11/16/2010, 5234

## ***High Percentage Senior Heifer Calf – Sept. 1 to Dec. 31, 2011***

1. JSH Blues, Walnut Grove, Mo.,

JSH Misty, 10/28/2011, 5329

## ***PB/FB Junior Yearling Heifer –***

### ***Jan. 1 to Apr. 30, 2011***

1. Sieren Cattle Co., Hedrick,

Sieren's Yvette, 4/27/2011, 5215

## ***High Percentage Junior Yearling Heifer – Jan. 1 to April 30, 2011***

1. Kountry Blues, Stanley,

Ruby Red LKM3X, 4/23/2010, 5159

## ***PB/FB Senior Female – Aug. 31, 2010 or Before***

1. JSH Blues, Walnut Grove, Mo.,

JSH BEEGEE ET, 6/16/2010, 5204

2. JSH Blues, Walnut Grove, Mo.,

JSH Long Tall Sally, 6/29/2010, 5201 PB/  
FB Cow/Calf

## ***High Percentage Junior Bull Calf – Jan. 1, 2012 or After***

1. Sieren Cattle Co., Hedrick,

Sieren's Zeke, 4/19/2012



# 2012 Iowa State Fair Show Results

## ***PB/FB Cow/Calf***

1. Elmcrest Genetics and Kehrli Kattle,  
Manchester, Palmer's Princess (with calf),  
1/26/2008, 4685

## ***PB/FB Junior Yearling Bull – Jan. 1 to April 30, 2011***

1. Sieren Cattle Co., Hedrick,  
Schlichte's TK Grunt, 4/15/2011

## ***Pair of Bulls***

1. Sieren Cattle Co., Hedrick  
Kountry Blues, Stanley,  
Brick LKM6Y & Keefer LKM7Y

## ***Pair of Females***

1. JSH Blues, Walnut Grove, Mo.  
Sieren Cattle Co., Hedrick  
2. Elmcrest Genetics and Kehrli Kattle,  
Manchester  
Sieren Cattle Co., Hedrick

## ***Produce of Dam***

1. Sieren Cattle Co., Hedrick  
Elmcrest Genetics and Kehrli Kattle,  
Manchester

## ***Best Five Head***

1. Sieren Cattle Co., Hedrick

## ***Champion***

### ***High Percentage Market Steer***

Jenel Wenndt, Lowden,  
Egkk Sunshine

## ***Champion***

### ***Low Percentage Heifer Calf***

Sieren Cattle Co., Hedrick  
Sieren's Zoe

## ***Champion***

### ***Low Percentage Yearling Heifer***

Katelyn Mellon, Dover, Ark.,  
RKF Jezzabelle

## ***Reserve Champion***

### ***Low Percentage Yearling Heifer***

Sieren Cattle Co., Hedrick  
Sieren's Zoe

## ***Champion***

### ***High Percentage Heifer Calf***

Sieren Cattle Co., Hedrick  
Sieren's Zsa Zsa

## ***High Percentage Heifer Calf***

1. JSH Blues, Walnut Grove  
JSH Misty

## ***Champion***

### ***High Percentage Yearling Heifer***

Kountry Blues, Stanley,  
Ruby Red LKM3X

## ***Reserve Champion***

### ***High Percentage Yearling Heifer***

Sieren Cattle Co., Hedrick,  
Sieren's Zsa Zsa

## ***Champion***

### ***High Percentage Bull Calf***

Sieren Cattle Co., Hedrick,  
Sieren's Zeke Reserve

## ***Champion***

### ***High Percentage Bull Calf***

Kountry Blues, Stanley  
Keefer LKM7Y

## ***Champion***

### ***High Percentage Yearling Bull***

Sieren Cattle Co., Hedrick,  
SIE Yosemite Sam

## ***Reserve Champion***

### ***High Percentage Yearling Bull***

Kountry Blues, Stanley  
Brick LKM6Y

## ***Reserve Champion***

### ***High Percentage Senior Bull***

Katelyn Mellon, Dover, Ark.,  
JSH Little Bubba

## 2012 Iowa State Fair Show Results

### Grand Champion

#### *High Percentage Bull*

Sieren Cattle Co., Hedrick,  
SIE Yosemite Sam

### Reserve Champion

#### *High Percentage Bull*

Sieren Cattle Co., Hedrick,  
Sieren's Zeke

### Champion

#### *Purebred/Fullblood Heifer Calf*

Sieren Cattle Co., Hedrick,  
Sieren's Zany

### Reserve Champion

#### *Purebred/Fullblood Heifer Calf*

Elmcrest Genetics and Kehrli Kattle,  
Manchester,  
Palmer's Abbie 2

### Champion

#### *Purebred/Fullblood Yearling Heifer*

Sieren Cattle Co., Hedrick,  
Sieren's Yvette

### Reserve Champion

#### *Purebred/Fullblood Senior Female*

JSH Blues, Walnut Grove, Mo.,  
JSH Long Tall Sally

### Champion

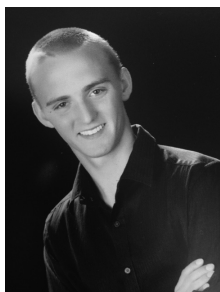
#### *Purebred/Fullblood Cow/Calf*

Elmcrest Genetics and Kehrli Kattle,  
Manchester,  
Palmer's Princess

### Reserve Champion

#### *Purebred/Fullblood Cow/Calf*

JSH Blues, Walnut Grove, Mo.,  
JSH BEEGEE ET



## Slade Dollarhide Receives Scholarship

The 2013 Ken Schlichte Memorial Scholarship was awarded to Slade Dollarhide of Haworth, Oklahoma. He is the son of Donna and Steve Dollarhide.

Slade has been a junior member for eight years and has been very active in showing and promoting Belgian Blue cattle.

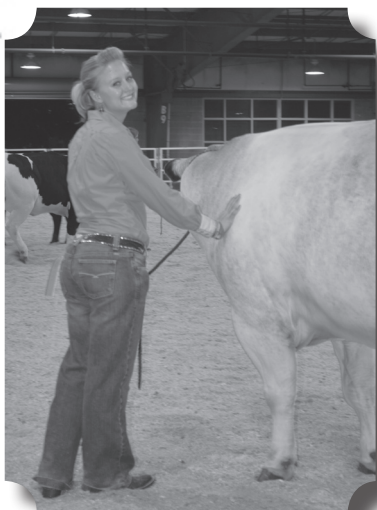
A graduate of Haworth Public School, he was involved in FFA, basketball, cross-country and the honor society.

He has received awards from the National Honor Society and the Oklahoma Honor Society. Outside of school he volunteers for "Adopt an Angel" program.

Currently, he is attending the University of Central Oklahoma and is majoring in biology to fulfill the prerequisites to be admitted to pharmacy school.

Slade states, "Belgian Blues are like a dog or cat to me because they are such pets once you start working with them. I enjoy watching calves grow in size and muscle once they are born up to a year old. They are definitely a breed of their own; no other cattle look like them nor act like them. Once I started eating Belgian Blue beef, it was hard to go out and eat another beef because of the wonderful taste. I just wish everyone could be able to try Belgian Blue beef off the market and compare it to the leading Angus beef. I definitely think it would be an eye opener to cattle beef consumers."

# Junior Member Benefits



## Cattle Registrations!



## Junior High Point Champion & Reserve Champion awarded yearly



To Join The  
American Belgian  
Blue Breeders  
PLEASE FILL OUT THE  
MEMBERSHIP  
APPLICATION



Ken Schlichte  
Memorial College  
Scholarship!

More information at  
[www.belgianblue.org](http://www.belgianblue.org)



# BGB

## BLACK GOLD BELGIANS



**Larry, Sandie & Lane Hull**

(580) 223-6082

4073 Dickson Rd. • Ardmore, Oklahoma 73401

[larrydhull1963@hotmail.com](mailto:larrydhull1963@hotmail.com) • [sandiehull@yahoo.com](mailto:sandiehull@yahoo.com)

# **put your herd AND profits first...**

---



**La Gantoise**

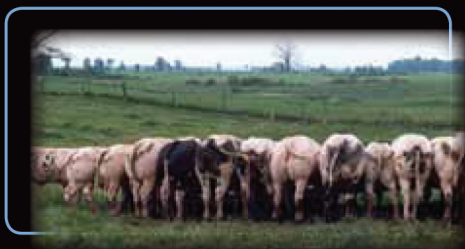
your **reliable** source

for **semen** of

**progeny tested**

**Belgian Blue Bulls**

**in America**



**We ship all over North America - UPS/COD**  
**No minimum order**  
**your success is our success!**

**Marie Goubau - La Gantoise Inc.**  
**613-679-4440**

info - photos - prices: [www.lagantoise.com](http://www.lagantoise.com)  
e-mail: [info@lagantoise.com](mailto:info@lagantoise.com)

## *2013 Officers*

### **HAROLD BRUBAKER PRESIDENT**

215 Back Creek Church Road  
Asheboro, NC 27205  
Home: 336-629-4202  
Office: 336-629-5128  
Fax: 336-629-2603  
email: [hjbrubaker@yahoo.com](mailto:hjbrubaker@yahoo.com)  
[www.belgianbluefarm.com](http://www.belgianbluefarm.com)

### **STEVE DOLLARHIDE VICE PRESIDENT**

HC 73 Box 680  
Haworth, OK 74740  
Phone: 580-245-2370  
email: [stevedollarhide@yahoo.com](mailto:stevedollarhide@yahoo.com)  
[www.srbelgianbluecattle.com](http://www.srbelgianbluecattle.com)

### **STEVE KINSER TREASURER**

986 Rd. 16  
Hugoton, KS 67951  
Home: 620-544-4490  
Office: 620-544-4490  
Fax: 620-544-4490  
Email: [kinser@pld.com](mailto:kinser@pld.com)

### **SHARON HUNT SECRETARY**

5354 S. 20th Rd.  
Walnut Grove, MO 65770  
Home: 417-694-8207  
Cell: 417-399-2906  
email: [jshblues@netscape.com](mailto:jshblues@netscape.com)  
[www.jshblues.com](http://www.jshblues.com)

## *Executive Director*

### **PAM LEE**

P.O. Box 633404  
Nacogdoches, TX 75963  
936-652-2550  
Email: [belgianblueinfo@yahoo.com](mailto:belgianblueinfo@yahoo.com)  
[www.belgianblue.org](http://www.belgianblue.org)

## *Board Members*

### **CONNIE BROOKS**

4773 E. Farm Rd 48  
Fair Grove, MO 65648  
Home: 417-759-7916  
Cell: 417-840-5464  
Fax: 417-759-7199  
email: [info@mnpfarm.com](mailto:info@mnpfarm.com)  
[www.mnpfarm.com](http://www.mnpfarm.com)

### **CINDY BERNER-SCHLICHTE**

25014 K42  
Merrill, IA 51038  
Cell: 712-540-2639  
Fax: 712-938-2027  
email: [bs.cindy@gmail.com](mailto:bs.cindy@gmail.com)

### **MARIE GOUBAU**

1489 Concession 1  
Lefavre, Canada ON K0B 1J0  
Home: 613-679-4133  
Fax: 613-679-4061  
Email: [eurogene@hawk.igs.net](mailto:eurogene@hawk.igs.net)  
[www.lagantoise.com](http://www.lagantoise.com)

### **ADAM HORMAN**

P.O. Box 26  
204 Lombard  
Clarence, IA 52216  
563-357-3336  
Email: [adamhorman@yahoo.com](mailto:adamhorman@yahoo.com)

### **KYLE KEHRLI**

2721 Stewart Ave.  
Winthrop, IA 50682  
319-934-3716  
[Kyle.kehrli@hotmail.com](mailto:Kyle.kehrli@hotmail.com)  
[www.elmcrestgenetics.com](http://www.elmcrestgenetics.com)



# Membership Directory

## ARKANSAS

### Bear Creek Farms

Melvin Herring  
1613 Roleson LN  
Jonesboro, AR 72404  
Cell: 870-830-1089  
bearcreekfarms@wildblue.net

### Edwards Belgian Blue Farm

Eddie & Lawanna Edwards  
244 Webb Hill Road  
McRae, AR 72102  
ebbfarms@yahoo.com  
Home: 501-882-5233

### Keesee Farm

James Keesee  
215 Peach Street  
Pratsville, AR 72129  
Home: 870-699-4498  
Cell: 870-917-8894

### Katelyn Mellon

275 Lenley Rd  
Dover, AR 72837  
479-747-3383  
kmellon2@atu.edu

### Payton Farms

Bill & Linda Payton  
843 W. Vinity Rd.  
McRae, AR 72102  
Paytonsfarms@yahoo.com  
Cell: 501-517-0884  
Cell: 501-517-2621  
Fax: 501-257-2026

### Stephen Names

1215 Little Cut Off Road  
Sheridan, AR 72150  
kdnames@windstream.net  
Home: 807-942-7350

## Steve Keesee

257 Grant St.  
Prattsville, AR 72129  
skeesee@windstream.net  
(home)  
kzcounrty@hotmail.com  
(Steve's)  
Home: 870-699-4606

## CALIFORNIA

### Guilin Brothers Live-stock

Alex Guilin  
1340 W. Hobsonway  
Blythe, CA 92225  
Work: 760-922-0216  
Farm: 760-922-0609  
guilinbros@gmail.com

## COLORADO

### Jerry and Pam Prostman

39625 Alta Vist Rd.  
Ramah, CO 80832  
Cell: 719-510-5286  
fnbebl@yahoo.com

### Paul Salazar

10959 Rd. 28  
Ft. Lupton, CO 80621  
psalazar@a-1chipseal.com  
Home: 970-785-2671  
Cell: 303-435-1413  
Fax: 970-785-2671

## FLORIDA

### Tammy's Way

Tammy Bennett  
4253 River Road  
Hilliard, FL 32046  
Work: 904-632-2090  
Cell: 904-219-6219  
tammy.bennett@evansde-livery.com

### Russell Lee Johnson

17851 NW 149 Place  
Alacuya, FL 32615  
352-281-4946  
rjl452@yahoo.com

## GEORGIA

### Triple K & J Farm

Keith & Linn White  
1388 Highway 33 South  
Moultrie, GA 31288  
229-873-6048  
linnmiller@rocketmail.com

## IDAHO

### 9K Ranch

Gene Lish  
2277 Inkom Rd.  
Inkom, ID 83245  
208-317-3356  
kidlish@q.com

## INDIANA

### Ellis Farms

Dr. Michael Ellis  
Box 38  
Holland, IN 47541  
EllisFarm45@hotmail.com  
Home: 812-536-5800  
Office: 812-536-3011

### Stone Farms

Stephen Stone  
3840 West Grandview Rd.  
Salem, IN 47167  
812-896-2603  
StoneClydes@aol.com  
StoneFarmsLLC.com

## IOWA

### Elmcrest Genetics

Wilbur Kehrl  
1596 210th St.  
Manchester, IA 52057  
neatoldethings@hotmail.com  
Home: 563-920-8494  
Office: 563-927-2982



# Membership Directory

## **Adam Horman**

P.O. Box 26  
204 Lombard  
Clarence, IA 52216  
563-357-3336  
Email: adamhorman@yahoo.com

## **Kehrli Homestead**

Larry Kehrli  
413 North Walnut  
New Hampton, IA 50659  
563-920-1294

## **Kehrli Kattle**

Kyle Kehrli  
2721 Stewart Ave.  
Winthrop, IA 50682  
kyle.kehrli@hotmail.com  
319-934-3716

## **Kountry Blues**

Kenneth or G. Lynne McManigle  
107 N. Nelson  
Stanley, IA 50671  
kenscars@netins.net  
Home: 319-634-3768  
Office: 319-634-3788  
Cell: 319-440-1313  
Fax: 319-634-3798  
www.kountrykens.net

## **M & M Patterson Farms, Inc.**

Mark Patterson  
14285 N. 115th Avenue  
East  
Gilman, IA 50106  
marpat@pcpartner.net  
Home: 641-498-2224  
Cell: 515-419-5129  
Fax: 641-498-7704

## **Schlichte Cattle Co.**

Cindy & Kyle Schlichte  
25014 K42  
Merrill, IA 51038  
slickcattleco@gmail.com  
Cell: 712-540-2639 or  
712-540-9109  
Fax: 712-938-2449

## **Laisee Shakespeare (Junior)**

3354 305th St.  
Hopkinton, IA 52237  
319-480-4411

## **Sieren Cattle Co.**

Glenda Sieren  
19233 Wapell Keokuk Rd.  
Hedrick, IA 52563  
gsieren@hotmail.com  
Cell: 641-777-2963  
www.belgianblue.org/  
members/sierencattle

## **Stonewall-Johnson Farm**

Laurie Stonewall  
2114 L Avenue  
Marengo, IA 52301  
319-361-0147

## **Sunnyside Livestock Farm**

Arthur Kuntz  
4082 170th St.  
Brooklyn, IA 52211  
Home: 641-522-7179  
Cell: 641-990-1841  
**Mary Beth Todd**  
(Junior)  
2308 170th Ave.  
Manchester, IA 52057  
563-920-8218

## **Jenel Wenndt**

(Junior)  
537 Taylor Avenue  
Lowden, IA 52255  
Home: 563-941-7678

## **KANSAS**

### **Sand Kastle Ranch**

Steve Kinser  
986 Rd. 16  
Hugoton, KS 67951  
kinser@pld.com  
Home: 620-544-4490  
Office: 620-544-4490  
Fax: 620-544-4490

## **KENTUCKY**

### **Call To Post Farms**

John Reid, Jr.  
186 Davids Dr.  
Sherpherdsville, KY 40165  
Cell: 502-639-1994  
John@call-to-post-farms.com

### **Elgin Cartwright**

245 Sandcut Rd.  
Madisonville, KY 42431  
270-821-4932

### **Mefford Family Farms**

Bettie Mefford  
546 Sulphur Lick Rd.  
Frankfort, KY 40601  
meffhogan@yahoo.com  
Home: 502-227-4819  
Office: 502-227-9855  
Cell: 502-545-0574

Honorary Member

### **Roger & Donna Yoebstl**

195 Rocky Hill School Rd.  
Smiths Grove, KY 42171  
dyoebstl@scrtc.com  
Home: 270-749-3476  
Cell: 270-535-1442

## **LOUISIANA**

### **Myers Belgian Blues**

Phil Myers  
P.O. Box 294  
Estherwood, LA 70534  
Home: 337-785-0750

# Membership Directory

## **Lazarus Farms**

Gerald W. Jr. or Tonya J.  
Lazarus  
249 Hwy 1041  
Pine Grove, LA 70453  
lazarusfarms@yahoo.com  
Cell: 225-268-0777

## **MAINE**

### **Homestead Farm**

Joylie Gushee  
277 Collinstown Rd.  
Union, ME 04862  
Work: 207-691-1541

## **MICHIGAN**

### **Grice Pharms**

Fred Grice  
528 W. Garfield  
Rothbury, MI 49452  
fred.grice@hometownpharmacy.com  
Home: 231-861-5535  
Office: 231-861-8138  
Fax: 231-861-8138

### **Harold E. Shoemaker**

6776 W. Blanchard Road  
Blanchard, MI 49310  
heshof41@yahoo.com  
989-561-5590  
989-560-8900

## **MINNESOTA**

### **Frosty Lane Farms**

Lawrence Panek  
17549 220th Ave. NE  
Thief River Falls, MN 56701  
ljpanek@gmail.com  
Home: 218-681-5703  
Cell: 218-689-0574

### **Holder Farms**

Wendy Holder  
5340 Meadowview Road  
Brainard, MN 56401  
218-839-8793  
jwhbrainard@hotmail.com

## **MISSOURI**

### **Jim & Dawn Boerding**

5520 N. Hwy 94  
Boerding Farm LLC  
St. Charles, MO 63301  
JDBoerding@msn.com  
Home: 636-250-3248  
Cell: 636-634-1779  
Fax: 636-250-3248

### **Jim & Sharon Hunt**

5354 S. 20th Rd.  
Walnut Grove, MO 65770  
jshblues@netscape.com  
Home: 417-694-8207  
Cell: 417-399-2906

### **MNP Farm**

Connie & Richard Brooks  
4773 E. Farm Rd. 48  
Fair Grove, MO 65648  
mnpfarm@aol.com  
Home: 417-759-7916  
Cell: 417-840-5464  
Fax: 417-759-7199  
www.mnpfarm.com

## **MONTANA**

### **Horned Cow Ranch**

John Meschke  
209 3rd Street H.P.  
Glendive, MT 59330  
406-365-5437

## **NEBRASKA**

### **Fillingham and Sons Farms, LLC**

John and Doug Fillingham  
30096 Fillingham Drive  
Morrill, NE 69358  
nebraskabelgianblue@yahoo.com  
308-247-2858  
Studnicka, Inc.

### **Jerry & Sue Studnicka**

47479 786th Rd.  
Loup City, NE 68853  
studnicka@kdsi.net  
Home: 308-745-0388  
Office: 866-904-2697  
Cell: 308-440-0768  
Fax: 308-745-0388  
StudnickaInc.com

## **NEVADA**

Lifetime Member  
**Belgian Blue Organics**  
Michelle Labrosse  
502 N. Division St.  
Carson City, NV 89703  
rita.soto@cheetahlearning.com  
Home: 775-230-0826

## **NEW YORK**

### **Rolling Winds Farm**

Nathan Wells  
102 E. South St.  
Groton, NY 13073  
607-351-0932  
backpack74@yahoo.com

## **NORTH CAROLINA**

### **Jonathan Brubaker**

3271 Brubaker Lane  
Asheboro, NC 27205  
johnathanbrubaker@yahoo.com  
Home 336-629-3957  
Cell: 336-465-0702  
Fax: 336-629-2603

### **Tudor Oak Farm**

Harold Brubaker  
215 Back Creek Church Rd.  
Asheboro, NC 27205  
hjbrubaker@yahoo.com  
Home: 336-629-4202  
Office: 336-629-5128  
Cell: 336-302-4663  
Fax: 336-629-2603  
www.belgianbluefarm.com

# Membership Directory

## OHIO

### Paradocs Farm

Jeff & Deb Williams  
9957 SR5  
Kinsman, OH 44428  
pdf@onecom.com  
Home: 330-876-3118  
Office: 330-876-5555  
Fax: 330-876-0103

## OKLAHOMA

### B Squared Cattle Co.

James D. or Tamela D. Berlin  
398288 W. 1500 Rd.  
Dewey, OK 74029  
James.Berlin@att.net  
Home: 918-534-3018

### Lloyd and Kellie Capps

3301 E. 420 Road  
Oologah, OK 74053  
Home: 918-371-1880  
lloyd\_capps@yahoo.com

### Cedar Creek Belgian Blue Farm

Ernest Garcia  
9323 S.H. 54  
Thomas, OK 73669  
Home: 580-661-2267  
Work: 580-695-2219  
Fax: 580-661-2269  
efgarcia59@yahoo.com

### Deshazo's Farm

Shirley & Mike Deshazo  
29370 Church House Rd.  
Bokoshe, OK 74930  
Home: 918-969-2608

### Steve Dollarhide

HC 73 Box 680  
Haworth, OK 74740  
stededollarhide@yahoo.com  
Home: 580-245-2370  
Cell: 870-648-6546  
Fax: 580-286-3753  
www.srbelgianbluecattle.com

### Rachel & Slade

#### Dollarhide

(Juniors)  
HC73 Box 680  
Haworth, OK 74740  
Home: 580-245-2370

#### Lane Hull

(Junior)  
4073 Dickson Rd.  
Ardmore, OK 73401  
Home: 580-223-6082

### Larry Don & Sandie Hull

4073 Dickson Rd.  
Ardmore, OK 73401-7825  
Home: 580-223-6082

### JXJ Farm

Justin & Amanda Jenkins  
30747 Prairie Bell Rd.  
Keota, OK 74941  
Home: 918-635-5003  
Cell: 918-635-5003  
justinjenkins06@yahoo.com

### David & Emilie A. Kraft

17220 N 97 E. Ave.  
Collinsville, OK 74021  
eclicity@mindspring.com  
Home: 918-371-4723  
Cell: 918-960-4723

### McCracken Hay Co.

Sherry Nix & Edgar McCracken  
456 NW McCracken Rd.  
Elgin, OK 73538  
580-492-5910  
580-492-4169  
580-492-5684 Fax  
sherry@McCrackenhay.com  
www.McCrackenhay.com

### Matlock Farms

Wayne & Cindi Matlock  
7160 East 181st St. South  
Bixby, OK 74008  
mrfixit7160@aol.com  
918-366-4397  
918-999-8335

### Doug and Shelley Muse

7919 N. Hartford  
Sperry, OK 74073  
918-425-4096H  
918-694-8879W  
918-694-8879C  
Doug.Muse@HP.com

### Pampered Maiden Farm

Charles C., Jr. & Linda Weddle  
8151 E. Sorghum Mill Rd.  
Edmond, OK 73034-9526  
ccwJr46@aol.com  
Home: 405-340-2618  
Cell: 405-306-6531  
Fax: 405-341-9372

### Don Pippin

10680 N. 4020 Rd.  
Wann, OK 74083  
pippinfarms@yahoo.com  
Home: 918-534-3967  
Cell: 918-331-6373

### Ross & Carol Weller

P.O. Box 904  
Skiatook, OK 74070  
Home: 918-396-7612  
Office: 918-596-7879  
Cell: 918-230-7750  
Fax: 918-699-3704

# Membership Directory

## OREGON

### Oak Hollow Belgian

#### Blues

Karen & Mark Kalsch  
10100 SW Robinson Rd.  
Hillsboro, OR 97123  
kalsch@msn.com  
Home: 503-628-1370  
Cell: 503-349-9053  
Fax: 503-628-1370

## PENNSYLVANIA

### Flowing Spring Farm

Dennis & Denise  
Wolgemuth  
315 Pitney Rd.  
Lancaster, PA 17601  
wolge3@verizon.net  
Home: 717-392-2157  
Office: 717-629-3547  
Fax: 717-656-6011

## TEXAS

### Baudoin Farm

Trent Baudoin  
200 Raintree CT  
Rockwall, TX 75189  
214-478-1241H  
214-478-1241W  
TazBaudoin@hotmail.com

### Jones Cattle Co.

Stanley Jones  
P.O. Box 631123  
Nacogdoches, TX 75963  
jonesentltd@sbcglobal.net  
Home: 936-564-5581  
Office: 936-564-7889  
Cell: 936-554-8075  
Fax: 936-569-6641  
www.bellebrook.com

### Tall Tex Beef

David or Christine Meyer  
1023 Denrock  
Dalhart, TX 79022  
806-241GRASS  
806-333-5847  
Talltex@xit.net

### Timber Top Belgian Blues

Becky Bradshaw  
483 Bradshaw Ranch lane  
Nacogdoches, TX 75964  
beckybradshaw483@yahoo.com  
Home: 936-569-6716  
Office: 936-569-6842  
Cell: 936-615-7507

## BELGIUM

### Honorary Member

### Herd Book Blanc-Bleu

#### Belge

Pierre Mallieu  
Rue Des Champs Elysees 4  
5590 Ciney Belgium  
pmhbbb@skynet.be  
Office: 328-323-0612  
Fax: 328-321-6392

## CANADA

### La Gantoise

Marie J. Goubau  
1489 Concession 1  
Lefaire, ON K0B 1J0  
Canada  
eurogene@hawk.igs.net  
Home: 613-679-4133  
Fax: 613-679-4061  
www.lagantoise.com

# Membership Benefits

As a national Belgian Blue Beef Breed organization, the following are some of the many services and programs we offer members:

- \* A complete registry
- \* All have DNA program available
- \* International recognition by Belgium
- \* Member of the Belgian Blue International (BBI) Association
- \* Promotional Booth and Materials
- \* A National Show
- \* A Youth Program
- \* A Student Scholarship
- \* Free Classified Ads!
- \* FREE Newsletter
- \* Friendships that last a lifetime!



# MNP Farm

*Home of Champions*



**National High Percentage  
Champion Bull for 2012  
MNP Blue Dynamo Jess being  
shown by Lacy DeShazo**



**We are willing to help anyone  
with their commercial herd.  
Just give us a call.**

**Thank you to all clients and friends  
over the years!**

***Dedicated to Quality***

**Purebred Cattle  
Percentage Cattle  
Semen & Embryos**

*Let us help put pounds  
on your commercial herd*

**Connie & Richard Brooks  
4773 E. Farm Road 48  
Fair Grove, MO 65648  
Phone: 417.759.7916  
Cell: 417.840.5464  
Fax: 417.759.7199**

Please visit our website at...  
**WWW.MNPFARM.COM**



*Find us on Facebook!*

# KOUNTRY BLUES

Home for percentages, transplants, and fullbloods with  
the emphasis on natural birthing for showing and  
a growing meat market



Ken & Lynne McManigle

107 N. Nelson • Stanley, IA 50671

Day Phone: 319-634-3788 • Evening Phone: 319-634-3768

Email: [kenskars@netins.net](mailto:kenskars@netins.net) • [www.kountrykens.net](http://www.kountrykens.net)





## International Association of Belgian Blue Cattle Breeders

*Setting the International Standard for Increased Meat Production*

### **BEEF-UP** **Your Herd** **& Profits**



### **Belgian Blue** **The Commercial** **Crossbreed Solution**

*Setting the Standard for  
Increased Meat Production*

Sponsored by AWEX - Walloon Export Agency  
Place Sainctelette, 2, 1080 Brussels, Belgium  
Tel: +32.2.421.82.11 Fax: +32.2.421.82.11  
Email: pmhbbb@skynet.be

Belgian Blue International Ltd  
A Free-Trade Zone Company, 8, rue de la Loi, 1050 Brussels, Belgium  
Tel: +32.2.421.82.11 Fax: +32.2.421.82.11  
Email: pmhbbb@skynet.be

*Free pamphlet  
available on our website!*

[www.belgianblueinternational.com](http://www.belgianblueinternational.com)

Belgian Blue International  
Rue des Champs Elysées, 4  
B 5590 Ciney - Belgium  
Tel: +32.83.23.06.12 or 16  
Fax: +32.83.21.28.37  
Email: pmhbbb@skynet.be

# Jones Cattle Co.



P.O. Box 631123  
Nacogdoches, TX 75963  
Phone: 936-564-7889  
Fax: 936-569-6641  
Contact: Stanley Jones

*Semen Available • Specializing in Black Genetics*

## Belle Brook Farms



NATURAL BEEF

Always ready to meet your needs for  
All Natural Belgian Blue Beef.

Try our 98% super lean ground beef,  
an excellent choice for a variety of dishes.

Call for a free catalog 1-800-830-2354 and  
visit our website [www.bellebrook.com](http://www.bellebrook.com).

BETTER FLAVOR • LESS FAT • MORE TENDER



# TUDOR OAK FARMS

*"The Nations's Leading Belgian Blue Genetics"*

**OUR HERD IS 100% ELITE STATUS**

INTRODUCING

**TOF OAK MYSTIC**



**His pedigree  
features some of  
the hottest  
genetics in the  
country!**

- **Clown Du Tilleul**
- **Opticien D'Au Chene**
- **Hebreu**
- **Gribouille De La Bonnie Raie**
- **Highgrove**

***Small Calves, Small Birth Weights!  
Semen and Embryos Available***

Harold, Geraldine, Jonathan & Justin Brubaker

215 Back Creek Church Road

Asheboro, NC 27205

Email: [hjbrubaker@yahoo.com](mailto:hjbrubaker@yahoo.com)

Cell 336-302-4663

**336-629-4202 • 336-629-2603 Fax**

**[www.tudoroakfarms.com](http://www.tudoroakfarms.com)**