



American **Blue Cattle**



T-Bone



Boneless Ribeye

*Taste the
Difference -
Excellence in
Every Cut*

Journal 2025

www.americanbluecattle.org



American Blue Cattle



SRD Alex's Dagger ET



SRD Black Turbo ET



SRD Aurora Bear



SRD Notorious Ranger



SRD Notorious Elsa



SRD Sugar Bear

**FULLBLOOD • PUREBRED • PERCENTAGE
BREEDING STOCK AVAILABLE**

**Steve Dollarhide
400 Onyx Hill Rd.
Haworth, OK 74740
(580)306-6546**

**<http://www.sramericbluecattle.com/>
steve@sramericbluecattle.com**

*Quality
Genetics*

*Specializing
in
Black*

JSH BLUES

Fullblood Cattle • Percentage Cattle
Embryos • Project Calves



Jim & Sharon Hunt
5354 S. 20th Road
Walnut Grove, MO 65770
Home: 417-694-8207
Mobile: 417-399-2906
E-Mail: jshblues@netscape.com

www.jshblues.com

**FOR SALE: FULLBLOOD AND PERCENTAGE
BULLS, HEIFERS AND FEEDER STEERS**



**European and American Genetics
Colors from White to Blue to Black**

**"WE CAN HELP YOU WITH THE VERY
BEST BEEF YOU WILL EVER EAT."**

Dear Blue Breeders,

Thank you again for letting me represent you as your president for this wonderful breed and association. What a year this has been, I have seen interest in the blues increase nationwide and that is an encouraging feeling. Our registrations are looking up and so is membership.

Fall time is the time we gather at our national show and the time to represent the breed. We have also established a wonderful advertising program that will come out this fall/winter so stay tuned. We are essential in getting the word out by either doing self-promotion and or showing at shows. **All farming and ranching, at its core, is about the people who do it. It is about serendipitous moments that happen to make our daily lives just a little bit better than they were before. So, I hope you'll take time this year to catch a moment of serendipity and share it with someone who is not familiar with your operation. It might mean the difference between success and a windy day.**

I am proud to be part of such an amazing industry and family within this breed and within this country. If you are not already, I would love for you to join me by becoming a member of the ABCA.

All my best
Charles Kinnison
ABCA President
crkblues@yahoo.com



Table of Contents

Letter from the President.....	2
History.....	3
2022, 2023, 2024 Scan.....	4, 6-7
2024 National Show, Tulsa.....	8-13
American Blue - A Greener Meat.....	14
Awards Banquet.....	15
What to Expect When Crossbreeding.....	17
Overall Benefits of Crossbreeding.....	18
Scenes from 2021 National Show.....	19
American Blue the Ultimate Terminal Crossbreeding Choice for Beef.....	20-21
Meat Testimonials.....	22-23
Premier Cow.....	24
Premier Bull.....	24
Premier Breeder.....	27
Breeding Up to Fullblood Status.....	27
Members Benefits.....	29
Membership Directory.....	30-32
Jr. Highlights.....	32-35
Jr. Members Benefits.....	36
Annual Scholarship Program.....	37

Registering an Animal.....	37
ABCA American Blues Jr. Awards.....	38

Advertisers

Black Gold Belgians.....	5
CRK Farms.....	21
Kehrli Kattle	16
Jones Cattle Co./Belle Brook Farms.....Ins Bk Cov
JSH Blues.....	1
Keesee Farms.....	28
MNP Farm.....	40
Sand Kastle Ranch.....	3
Schlichte-Petty Cattle Co.....	26
SR American Blue Cattle.....	Ins. Frt. Cov.
Tudor Oaks Farms.....	Bk Cover
Wagner American Blue.....	16

History

The American Blue Cattle began as the Belgian Blue, which originated in central and upper Belgium when the local red-pied and black-pied cattle were crossed with Durham Shorthorns in the late 1800's. Some Charolais influence during the 19th century is also suggested.

Originally a dual-purpose breed, beef production became the focus following World War II, when Europe's economy demanded increased beef quality and quantity. During the 1950's the Belgian cattle underwent a selective genetic breeding and development program conducted by Professor Hanset at the AI Center in the Province of Liege. This program created their unusually heavy muscling.

The first Belgian Blues were imported to the United States in 1978. Today, American Blue Cattle are their own fullblood registered breed, independent from their Belgian relatives after years of breeding for easier calving, lower birth weights and improved structural soundness.



BLUE X HOLSTEIN CROSS



BLUE CROSS X BLUE CROSS

National American Blue Show 2022

Reg#	Weight	DOB	Sex	Av. REA	Av. IMF	Av. FT	Animal Name	Owner
7989	611	2/22/22	B	10.18	2.3	0.07	SRD Roe's Outlaw (100%)	Steve Dollarhide
7982	287	6/12/22	C	5.7	1.7	0.08	SKSL Crystal Confetti (68.75%)	Ashlyn Augustine
7909	1126	4/27/21	B	14.2	2.1	0.09	W3E Mongo (50%)	Rose Wagner
7905	1172	4/28/21	B	12.5	2.2	0.08	W3E Maximus (50%)	Rose Wagner
7983	799	7/28/21	B	11.6	1.6	0.06	EGKK Improver (87.5%)	Rose Wagner
7988	1102	6/4/21	B	14.9	5	0.29	W3E Little Dude (50%)	Rose Wagner
7992	1184	5/9/21	B	16.7	2.1	0.06	MNP Blue Prancer's Classic (100%)	Connie Brooks
7991	1166	5/23/21	B	16.3	3.2	0.07	MNP Blue Prancer's Classic (100%)	Connie Brooks
7993	1083	5/29/21	B	16.7	2.4	0.08	MNP Blue Reformer's Rambler (100%)	Connie Brooks
8008	1116	5/27/21	B	15.4	3.7	0.08	CCW Big John (50%)	Charles Weddle
7873	1305	12/24/20	B	16.5	2.3	0.1	BGB Bandit (93.75%)	Braiden Garcia
8007	510	2/26/22	B	10.1	2.7	0.07	CCW Prince Max Jr. (75%)	Charles Weddle
8006	463	3/28/22	C	7.5	2.4	0.07	CCW Snow Princess (100%)	Charles Weddle
7998	555	2/18/22	C	11	1.6	0.07	BGB Luna (100%)	Larry Hull
7999	431	3/6/22	C	10.3	1.2	0.06	BGB Sofia (100%)	Larry Hull
7995	467	2/21/22	C	11.3	1.6	0.06	BGB Mini Myte (100%)	Larry Hull
7997	445	3/30/22	C	10.4	2	0.08	BGB Jade (100%)	Larry Hull
8001	675	2/18/22	B	15.1	2.3	0.08	BGB Wilbur (100%)	Larry Hull
8003	575	2/12/22	B	11.3	1.5	0.07	BGB Rio (87.5%)	Larry Hull
8002	877	10/18/21	B	14.7	1.8	0.07	BGB Maverick (100%)	Larry Hull
7599	1904	4/16/18	B	18.9	2.3	0.12	POB Arthur (100%)	Chuck Kinnison
7921	814	12/21/21	C	16.4	1.4	0.08	CRK Arthur's Joy (100%)	Chuck Kinnison
7945	1037	4/20/21	C	14.5	2.2	0.07	EGKK BR Belle Star (87.5%)	Chuck Kinnison
7930	758	10/9/21	C	13	2.5	0.09	SRD Blue Love Bug (100%)	Chuck Kinnison
7934	720	12/5/21	C	12.6	2.4	0.07	SRD Blue Cuddle Bug (100%)	Chuck Kinnison
7820	1270	3/25/20	C	14.5	3	0.08	SRD Black Star (100%)	Steve Dollarhide
7868	951	2/18/21	C	14.9	1.3	0.08	SRD Aurora's Jackie (100%)	Steve Dollarhide
7931	785	10/10/21	C	14.3	2.3	0.08	SRD Black Brandy (100%)	Steve Dollarhide
7933	677	10/19/21	C	13.7	2.7	0.09	SRD Black Penny (100%)	Steve Dollarhide

BGB

BLACK GOLD BLUES



Larry, Sandie & Lane Hull

(580) 504-1157

4073 Dickson Rd. • Ardmore, Oklahoma 73401

larrydhull1963@hotmail.com • sandiehull@yahoo.com

American Blue Cattle Scan Data 2023

Weight	DOB	SEX	REA	REA/CWT	%IMF	FAT	Animal Name	Owner
1179	12/5/21	F	17.52	1.49	2.19	0.07	SRD Blue Cuddle Bug 100%	Charles & Rebecca Kinnison
1098	10/9/21	F	16.41	1.49	1.14	0.08	SRD Blue Love Bug 100%	Charles & Rebecca Kinnison
962	6/18/22	S	13.31	1.38	0.83	0.05	CRK Farms Johnny Cash 100%	Charles & Rebecca Kinnison
656	12/6/22	S	10.57	1.61	3.05	0.18	SRD Rudy 50%	Charles & Rebecca Kinnison
972	5/23/22	F	15.69	1.61	2.02	0.09	SRD Blue Oreo 100%	Charles & Rebecca Kinnison
640	2/12/23	M	12.42	1.94	1.13	0.08	SRD Blue Gizmo 100%	Charles & Rebecca Kinnison
1142	5/20/22	S	16.56	1.45	3.78	0.26	W3E Daisy Hearthrob 50%	Steve & Rose Wagner
1142	5/20/22	S	14.00	1.23	3.68	0.26	W3E Skipper's Badge 50%	Steve & Rose Wagner
834	8/22/22	M	13.08	1.57	2.06	0.08	W3E Donald's Shadow 75%	Steve & Rose Wagner
1188	4/12/22	M	15.52	1.31	3.00	0.08	W3E Bubba 100%	Steve & Rose Wagner
1489	7/28/21	M	19.27	1.29	1.66	0.08	EGKK Improver 87.5%	Steve & Rose Wagner
625	2/28/23	F	12.26	1.96	1.57	0.08	SRD Notorious Elsa 100%	Steve Dollarhide
906	10/20/22	M	15.06	1.66	2.07	0.08	SRD Black Armor 100%	Steve Dollarhide
745	12/23/22	S	12.55	1.68	3.27	0.18	SRD Big Boy 50%	Steve Dollarhide
721	10/15/22	F	11.33	1.57	1.59	0.07	SRD Black Diamond Too 100%	Steve Dollarhide
671	1/7/23	F	13.71	2.04	1.39	0.07	SRD Mocha Bear 100%	Steve Dollarhide
731	12/27/22	F	13.38	1.83	1.13	0.08	SRD Passion Bear 100%	Steve Dollarhide
681	1/5/23	F	12.78	1.88	1.79	0.09	SRD Sugar Bear 100%	Steve Dollarhide
1436	10/18/21	M	20.26	1.41	2.14	0.08	BGB Maverick 100%	Larry & Sandie Hull
835	12/25/22	M	11.47	1.37	2.08	0.07	BGB Rudolph 100%	Larry & Sandie Hull
968	2/21/22	F	13.47	1.39	1.62	0.09	BGB Mini Myte 100%	Larry & Sandie Hull
1805	9/5/17	F	18.86	1.04	2.47	0.18	BGB Lexi 100%	Larry & Sandie Hull
1047	3/30/22	F	12.39	1.18	1.41	0.09	BGB Jade 100%	Larry & Sandie Hull
819	4/26/22	F	13.43	1.64	0.70	0.06	BGB Angie 100%	Larry & Sandie Hull
655	12/18/22	M	11.96	1.83	0.93	0.06	BGB Wild Bill 100%	Larry & Sandie Hull
994	2/18/22	F	11.39	1.15	0.99	0.07	BGB Luna 100%	Larry & Sandie Hull
800	10/12/22	M	12.11	1.51	1.64	0.08	TBG Blue Bonnet Spearman 73%	Taylor & Braiden Garcia
1649	12/24/20	M	20.29	1.23	2.66	0.09	BGB Bandit 93.75%	Taylor & Braiden Garcia
883	10/11/22	F	14.46	1.64	2.50	0.09	ECG Buttons 59%	Ernest & Celeste Garcia
404	4/22/23	S	9.08	2.25	1.46	0.07	CCW Spike 87.5%	Charles Weddle
843	10/14/22	S	14.21	1.69	2.70	0.33	ECG Bubba 25%	Ernest & Celeste Garcia

American Blue Cattle Scan Data 2024

Reg #	WEIGHT	DOB	SEX	REA	REA/CWT	%IMF	FAT	Animal Name	Owner
8163	1252	3/29/23	M	18.20	1.45	1.25	0.09	SKSL King Tut 62.5%	Steve Kinser
8164	1478	4/10/23	M	20.24	1.37	1.64	0.08	SKSL Absalom 50%	Steve Kinser
8166	1052	4/14/23	M	14.48	1.38	1.60	0.11	SKSL 71L 59.38%	Steve Kinser
8157	1150	4/3/23	F	13.96	1.21	2.88	0.23	SKSL Tamar 50%	Steve Kinser
8137	718	12/26/23	F	12.27	1.71	1.48	0.07	SRD Notorious Princess 100%	Steve Dollarhide
8135	610	12/16/23	F	10.80	1.77	1.23	0.07	SRD Clown's Minnie 100%	Steve Dollarhide
8138	650	1/9/24	F	11.36	1.75	1.81	0.07	SRD Poppin's Heart 100%	Steve Dollarhide
8063	1065	2/28/23	F	14.43	1.36	1.80	0.09	SRD Notorious Elsa 100%	Steve Dollarhide
8060	1170	9/6/23	F	15.02	1.28	1.21	0.09	SRD Sugar Bear 100%	Steve Dollarhide
8133	1045	9/6/23	F	12.83	1.23	1.88	0.19	SRD Roe's Success 100%	Steve Dollarhide
8136	710	12/25/23	M	12.88	1.81	1.85	0.07	SRD Foreman's Tahoe 100%	Steve Dollarhide
8134	851	9/7/23	M	12.19	1.43	0.76	0.07	SRD Artic's Blue Jet 100%	Steve Dollarhide
7997	1441	3/30/22	F	16.31	1.13	2.25	0.08	BGB Jade 100%	Larry Hull
8183	742	8/21/23	F	12.90	1.74	0.89	0.06	BGB Precious 100%	Larry Hull
7998	1236	2/18/22	F	15.10	1.22	1.16	0.06	BGB Luna 100%	Larry Hull
7995	1416	2/21/22	F	14.43	1.02	2.11	0.08	BGB Mini Myte 100%	Larry Hull
8178	750	11/22/23	M	12.71	1.69	1.85	0.08	BGB Spock 87.5%	Larry Hull
8182	662	2/23/24	M	11.25	1.70	1.10	0.08	BGB Jackpot 100%	Larry Hull
8181	967	11/19/23	M	13.86	1.43	1.25	0.09	BGB Slick 100%	Larry Hull
8177	830	11/6/23	M	13.75	1.66	2.57	0.07	BGB Arby 100%	Larry Hull
8153	1148	4/30/23	M	13.90	1.21	3.86	0.16	W3E Danny 50%	Rose Wagner
8128	1605	4/1/22	M	17.19	1.07	1.44	0.06	EGKK Magic Pedro 100%	Rose Wagner
8154	1006	5/3/23	M	11.76	1.17	3.26	0.09	W3E Mickey 68.75%	Rose Wagner
8121	1241	4/12/23	M	14.16	1.14	2.39	0.08	EGKK Traveler SD 75%	Rose Wagner
8143	907	4/9/23	F	14.27	1.57	0.80	0.07	W3E Lady Hazel 87.5%	Rose Wagner
8144	1064	5/3/23	M	12.51	1.18	3.16	0.19	W3E DJ 68.75%	Rose Wagner
8174	840	2/2/23	M	12.06	1.44	0.92	0.06	CCW Cezar 84.375%	Charles Weddle
8059	1180	12/27/22	F	16.40	1.39	1.40	0.08	SRD Passion Bear 100%	Charles Weddle
8101	1356	10/11/22	F	15.48	1.14	2.80	0.20	ECG Buttons 59.375%	Ernest Garcia
8173	784	8/29/23	F	12.21	1.56	3.31	0.19	ECG Waffer 71.875%	Ernest Garcia
8091	855	5/23/23	F	11.92	1.39	1.11	0.07	CCW Patches Blue Moon 100%	Charles Weddle
8175	650	11/9/23	F	11.58	1.78	1.24	0.07	TBG Snow white 71.875%	Bralden Garcia
8171	603	12/4/23	F	11.11	1.84	1.88	0.07	ECG Misty 100%	Ernest Garcia
8194	425	2/23/24	F	7.27	1.71	1.18	0.08	CCW Listen Linda 46.875%	Charles Weddle
8051	1028	8/22/22	M	10.14	0.99	1.64	0.07	W3E Donald's Shadow 75%	Ashlyn Augustine
8037	890	4/20/22	F	9.71	1.09	1.38	0.07	SKSL White Diamond 59.375%	Ashlyn Augustine

2024 National Show Results

2024 TULSA STATE FAIR OPEN SHOW RESULTS

STEERS

*Market Low% Steer: 1/2 Blood or
Under - Over 900 lbs.*

1. W3E Danny
Emma Wagner

CHAMPION

Market Low % Steer

- W3E Danny
Emma Wagner

*Market High% Steer: Over 1/2 Blood
Under 15/16 - Over 900 lbs.*

1. EGKK Traveler SD
Emma Wagner
2. SKSL71L
Steve Kinser
3. W3E Mickey
Everett Wagner

CHAMPION

Market High % Steer

- EGKK Traveler SD
Emma Wagner

RESERVE CHAMPION

Market High % Steer

- SKSL71L
Steve Kinser

GRAND OVERALL CHAMPION STEER

- EGKK Traveler SD
Emma Wagner

RES. OVERALL GRAND CHAM- PION

- SKSL71L
Steve Kinser

FEMALES

*Halfblood Females - February 1,
2024 & After*

1. CCW Listen Linda
Cruz Garcia

CHAMPION

Halfblood Calf

- CCW Listen Linda
Cruz Garcia

*Halfblood Females - February 1 -
2023 - May 31, 2023*

1. SKSL Tamar
Steve Kinser

CHAMPION

Halfblood Yearling

- SKSL Tamar
Steve Kinser

GRAND OVERALL CHAMPION

Halfblood Female

- SKSL Tamar
Steve Kinser

RESERVE OVERALL CHAMPION

Halfblood Female

- CCW Listen Linda
Cruz Garcia

*High Percentage Females -
October 1, 2023 - January 31, 2024*

1. TBG Snow White
Dalton Garcia
2. ECG Waffer
Dalton Garcia

2024 National Show Results

CHAMPION- DIVISION

High Percentage Female

TBG Snow White

Dalton Garcia

CHAMPION- DIVISION

High Percentage Female

BGB Jade

Sandie Hull

RESERVE CHAMPION- DIVISION

High Percentage Female

ECG Waffer

Dalton Garcia

RESERVE CHAMPION- DIVISION

High Percentage Female

White Diamond

Ashlyn Augustine

High Percentage Females - February 1 - May 31, 2023

1. W3E Lady Hazel

Emma Wagner

2. W3EDJ

Emma Wagner

GRAND OVERALL CHAMPION

High Percentage Females

ECG Buttons

Criz Garcia

High Percentage Females - October 1, 2022 - January 31, 2023

1. ECG Buttons

Criz Garcia

RESERVE GRAND OVERALL CHAMPION

High Percentage Females

W3E Lady Hazel

Emma Wagner

CHAMPION- DIVISION

High Percentage Female

ECG Buttons

Criz Garcia

Purebred/Fullblood Females - October 1, 2023 - January 31, 2024

1. ECG Misty

Dalton Garcia

2. SRD Poppin's Heart

Steve Dollarhide

3. SRD Notorious Princess

Steve Dollarshide

4. SRD Clown's minnie

Steve Dollarhide

RESERVE CHAMPION- DIVISION

High Percentage Female

W3E Lady Hazel

Emma Wagner

CHAMPION-DIVISION

Purebred/Fullblood Female

ECG Misty

Dalton Garcia

High Percentage Females - October 1, 2021 - September 30, 2022

1. BGB Jade

Sandie Hull

2. White Diamond

Ashlyn Augustine

2024 National Show Results

RESERVE CHAMPION – DIVISION

Purebred/Fullblood Female

SRD Poppin's Heart
Steve Dollarhide

Purebred/Fullblood Females – June 1 - September 20, 2023

1. SRD Roe's Success
Steve Dollarhide
2. BGB Precious
Sandie Hull

Purebred/Fullblood Females – February 1 - May 31, 2023

1. SRD Notorious Elsa
Steve Dollarhide
2. CCW Patches Blue Moon
Criz Garcia

Purebred/Fullblood Females – October 1, 2022 - January 31, 2023

1. SRD Passion Bear
Dalton Garcia
2. SRD Sugar Bear
Steve Dollarhide

CHAMPION – DIVISION

Purebred/Fullblood Females

SRD Passion Bear
Dalton Garcia

RESERVE CHAMPION

Purebred/Fullblood Females

SRD Sugar Bear
Steve Dollarhide

Purebred/Fullblood Female – October 1, 2021 - January 31, 2023

1. BGB Mini Myte
Sandie Hull

2. BGB Luna
Sandie Hull

CHAMPION – DIVISION

Purebred/Fullblood Females

BGB Mini Myte
Sandie Hull

RESERVE CHAMPION – DIVISION

Purebred/Fullblood Females

BGB Luna
Sandie Hull

GRAND OVERALL CHAMPION

Purebred/Fullblood Females

SRD Passion Bear
Dalton Garcia

RESERVE GRAND OVERALL CHAMPION

Purebred/Fullblood Females

SRD Sugar Bear
Steve Dollarhide

BULLS

Halfblood Bulls –

February 1 - May 31, 2023

1. SKSL Absalom
Steve Kinser

CHAMPION

Halfblood Bull

SKSL Absalom
Steve Kinser

Percentage Bulls –

October 1, 2023 - January 31, 2024

1. BGB Spock
Sandie Hull

2024 National Show Results

CHAMPION

Percentage Bull

BGB Spock
Sandie Hull

Percentage Bulls –

February 1 - May 31, 2023

1. SKSL King Tut
Steve Kinser
2. CCW Cezar
Dalton Garcia

CHAMPION

Percentage Bull

SKSL King Tut
Steve Kinser

RESERVE CHAMPION

Percentage Bull

CCW Cezar
Dalton Garcia

Percentage Bulls –

October 1, 2021 - September 30, 2022

1. Donald's Shadow
Ashlyn Augustine

CHAMPION

Percentage Bull

Donald's Shadow
Ashlyn Augustine

GRAND OVERALL CHAMPION

Percentage Bull

SKSL King Tut
Steve Kinser

RESERVE GRAND OVERALL- CHAMPION

Percentage Bull

CCW Cezar
Dalton Garcia

Purebred/Fullblood Bulls – February 1, 2024 and After

1. BGB Jackpot
Sandie Hull

Purebred/Fullblood Bulls – October 1, 2023 - January 31, 2024

1. BGB Slick
Sandie Hull
2. SRD Foreman's Tahoe
Steve Dollarhide
3. BGB Arby
Sandie Hull

CHAMPION

Purebred/Fullblood Bull

BGB Slick
Sandie Hull

RESERVE CHAMPION

Purebred/Fullblood Bull

SRD Foreman's Tahoe
Steve Dollarhide

Purebred/Fullblood Bulls – June 1 - September 30, 2023

1. SRD Artic's Blue Jett
Steve Dollarhide

CHAMPION

Purebred/Fullblood Bull

SRD Artic's Blue Jett
Steve Dollarhide

2024 National Show Results

**Purebred/Fullblood Bulls –
October 1, 2021 - September 30,
2022**

1. EGKK Magic Pedro
Emma Wagner

CHAMPION

Purebred/Fullblood Bull

- EGKK Magic Pedro
Emma Wagner

GRAND OVERALL CHAMPION

Purebred/Fullblood Bull

- EGKK Magic Pedro
Emma Wagner

RESERVE OVERALL CHAMPION

Purebred/Fullblood Bull

- BGB Slick
Sandie Hull

Best Pair of Females

1. BGB Mini Myte
Sandie Hull

Best Pair of Bulls

1. BGB Slick
Sandie Hull

Get-of-Sire

1. Dalton Garcia
2. BGB Slick
Sandie Hull

Produce of Dam

1. BGB Mini Myte

Best of 5 Head

1. BGB Mini Myte
Sandie Hull

2024 Champion Photos



**National Grand Champion
American Blue Bull
EGKK Magic Pedro
Owned by Emma Wagner**



**National Grand Champion
American Blue Female
SRD Passion Bear
Owned by Charles Weddle**

2024 Champion Photos



**National Grand Champion
Low Percentage American Blue Bull
SKSL Absalom
Owned by Steve Kinser**



**National Grand Champion
High Percentage American Blue Bull
SKSL King Tut
Owned by Steve Kinser**



**National Grand Champion
American Blue Overall Steer
EGKK Traveler SD
Owned by Emma Wagner**



**National Grand Champion
Low Percentage American Blue Female
SKSL Tamar
Owned by Steve Kinser**



**National Reserve Grand Champion
American Blue Female
SRD Sugar Bear
Owned by Steve Dollarhide**

American Blue — A Greener Meat

How are our cattle greener, you ask?

Over a six year span the American Blue cattle were studied along with other traditional beef breeds. The breeds were segregated in penned control groups. The American Blues had the highest feed efficiency and costs were down over \$70 on average for the other pens on test.

Genetically American Blue cattle produce a limited amount of fat which produces twice the calories of protein. It will take more energy by other breeds to put on that extra fat.

So, if putting weight on a calf, it takes more than three (3) times the energy (calories) to put a gram of fat on a calf than muscle (protein).

American Blues have higher feed efficiency and use fewer natural resources. This breed is also noted for its' hyper-muscular growth. This allows more meat on the rail with less waste. In a recent USDA study comparing Angus and Blues, the Angus had 66lbs more waste per half, whereas the blues had 100lbs. more retail meat on their half. On average other breeds will yield 55-65% on the rail and blues will yield 68-75%.

If you are putting weight on a calf, it takes more than three times the energy (9 calories/gram) to put a gram of fat on a calf than muscle (4 calories/gram for protein).

High feed efficiency, high yield, and high processing percentage with less waste. That equals green, or rather, Blue beef!.

***CONSUMER NUTRITIONAL NOTE:**

Approximately 9 calories to 1 gram of fat

Approximately 4 calories to 1 gram of muscle protein

(Based on a 4 oz raw serving)	Certified American Blue Ground Beef	USDA Regular Ground Beef	USDA Average Chicken Breast (w/skin)****
Fat (g)	7.0	30.0	10.5
Moisture (g)	71.7G/per 100 g	63.34	79.18
Protein (g)	25	18.78	23.7
Cholesterol (mg)	64	96	72.1

2024 National Show Awards



**Steve Dollarhide
receives National Premier
Breeder Buckle**



**Wagner Family receives
National Grand Champion
Bull Buckle**



**Harold Brubaker
receives Pam Lee
Memorial Award Buckle**



**Emma Wagner receives
National High Point
Junior Buckle**



**Dalton Garcia receives National
Reserve High Point Junior
Award**



**Charles Weddle receives
National Grand Champion
Female Buckle**



**Emma Wagner receives
National Grand Champion
Steer Buckle**



**Emma Wagner receives
National Premier
Exhibitor**



**Garcia Family receives
National Herdsman
Award**

EGKK MAGIC PEDRO



*Semen available at 605
Sires in Marion, South
Dakota from EGKK
Magic Pedro the 2024
National American Blue
Champion Bull.*



*We sell Breeding Stock
and American Blue Meat.*

Steve & Rose Wagner

27817 405th Ave,
Parkston, South Dakota 57366
Steve Wagner (605) 505-0050
Rose Wagner (605) 505-0454

*Proven Low
Birth Weights*



Your Source for Balanced Blues

- Maternally Driven
- Fertility Sorted
- Feedlot Proven
- Consumer Approved

With over 25+ years invested in the Blues we have developed a line of cattle which thrives from birth to finish. Cows are expected to excel on forage and to bring us an unassisted live calf every year. After weaning, calves are expected to gain 3+ lb/day and to convert 8lb of feed or less into 1lb of bodyweight. The ultimate test is our beef customers who return to us every year.



KEHRLI CATTLE

Kyle Kehrl

Quasqueton, IA

319.521.7135

kyle.kehrl@hotmail.com

www.kehrlifarms.com

What to Expect When Crossbreeding

- The main thing is that you may not see any difference in a Blue cross calf at birth. The muscle is a natural development for the breed. They are not born with extreme muscle but will start developing it at 4 to 6 weeks old. The one copy Blue cross might not look very different from the side but if you look from behind or from the top the cross should be thicker and be a heavier calf. What you cross them with also makes a difference. Some breeds have weaker forms of the Myostatin gene and will show more muscle expression on the first cross.

- American Blue beef is famous for its impressive muscling. This breed of beef outclasses all other beef breeds in carcass yield (up to 80%). When using crossbreeding programs of other dairy or beef breeds, it increases carcass yield from 5 to 7 percent compared to the maternal line.

Meat Quality

“Preliminary results indicate that the American Blue is an excellent terminal sire breed. They produce a 5 to 9% higher percentage retail product than other sire breeds with meal palatability similar to Angus and Hereford sire breeds.”

USDA Animal Research, Clay Center, Nebraska, July 1997.

Sire Breed of Steer	Carcass Wt. Lb.	Dressing %	.3 Trim Retail Prod %	Fat Thick in.	Rib Eye Area sq. in.	Flavor %	Juiciness %
Crossbred							
Am. Blue	779	62.2	74	.26	13.34	4.85%	5.02



The Ultimate Terminal Crossbreeding Choice

Beef producers have been benefitting when using a fullblood American Blue bull as a terminal crossing sire. Blue cross-bred calves result in increased carcass yields as compared to their dams

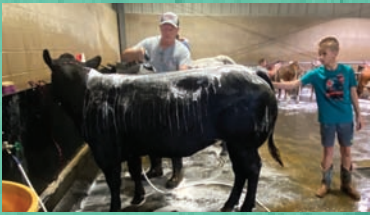
The American Blue bull will put more weight and muscle on calves. When using a fullblood American Blue bull he will pass on one myostatin gene and farmers/ranchers can experience on average a 7% yield increase, making the crossbreeding program more profitable.

Overall Benefits of Crossbreeding

- **High growth rates**
- **Early turnoff**
- **Outstanding feed conversion**
- **Dress out percentages 60%+**
- **High yield**
- **10% more lean retail product**
- **Easy calving**
- **Early maturity**
- **Tenderness from fine muscle fibers**
- **Higher protein content**
- **Excellent flavor & juiciness**
- **Very docile temperament**



Scenes from 2024 National Show



American Blue the Ultimate Terminal Crossbreeding Choice for Beef



*By Charles Kinnison
President American
Blue Cattle Association*

Beef producers have been benefiting when using a fullblood American Blue bull as a terminal crossing sire. Blue cross-bred calves result in increased carcass yields as compared to their dams. The American Blue bull will put more weight and muscle on calves. When using a fullblood American Blue bull he will pass on one myostatin gene and farmers/ranchers can experience on average a 7% yield increase, making the crossbreeding program more profitable.

American Blues have higher feed efficiency and use fewer natural resources. This breed is also noted for its' hyper-muscular growth. This allows more meat on the rail with less waste. In a recent USDA study

comparing the blue meat with other carcasses, the blues had 100lbs. more retail meat on their half. On average other breeds will yield 55-65% on the rail and blues will yield 68-75%. High feed efficiency, high yield, and high processing percentage with less waste. That equals green, or rather, blue beef!

Over a six-year span the American Blue cattle were studied along with other traditional beef breeds. The breeds were segregated in penned control groups. The American Blues had the highest feed efficiency and costs were down over \$70 on average for the other pens on test. Genetically American Blue cattle produce a limited amount of fat, which produces twice the calories of protein. It will take more energy by other breeds to put on that extra fat.

The main thing is that you may not see any difference in a Blue cross calf at birth. We don't see any calving difficulties using the full-blood blood bull for crossbreeding. Calves are born weighing approx. 75- 80 lb. and do not show the added muscle at birth. The muscle is a natural development for the breed. They are not born with extreme muscle but will start developing it at 4 to 6 weeks old. The one copy Blue cross might not look very different from the side but if you look

from behind or from the top the cross should be thicker and be a heavier calf. What you cross them with also makes a difference. Some breeds have weaker forms of the Myostatin gene and will show more muscle expression on the first cross. American Blue beef is famous for its impressive muscling. This breed of beef outclasses all other beef breeds in carcass yield (up to 80%). When using crossbreeding programs of other dairy or beef breeds, it increases carcass yield from 5 to 7 percent compared to the maternal line.

American Blue animals are extremely lean, characterized by a deviant muscle fiber type compared to non- American Blue Cattle. This fiber type can result in lower maintenance energy requirements. Maintenance requirements of the Ameri-

can Blue Cattle were investigated based on a zero-body weight gain. This showed that maintenance energy requirements of the American Blue Beef cows were close to the mean requirements of other beef genotypes. Among the 18 breeds of cattle tested for this study, the blues were shown to be the most profitable. They used twenty-two factors to test performance including feed efficiency, feed cost, purchase price and average daily gain. A higher efficiency means the reduction of feed costs for livestock production which will therefore result in higher profitability and is what the ultimate cattleman is looking for.

info@americanbluecattle.org

580-612-2583

<https://americanbluecattle.org/>



CRK Farms

Chuck & Rebecca Kinnison & Family

11564 Pierce Rd.

Wakarusa, IN 46573

574-320-6446 Chuck

317-440-9524 Rebecca

crkblues@yahoo.com

Testimonials of American Blue Cattle Meat



To all the present cattle producers and future cattle producers out there, these are the words straight from the butcher who was stunned and amazed on the quality of the American Blue cattle meat.

Growing up in the agricultural community I've been exposed to every single breed of cattle. As I got into my career as a butcher, I first started my career in a processing facility that processed your everyday breeds to the mainstream cattle. I processed beef all the way up to state inspected beef that we had a full custom cut sheet. This would offer the customer every single possible cut they can get off the beef. During that time my overall view of cattle completely changed. The meat end of the industry truly opened my eyes to a whole different world.

Fast forward many years later I finally got my opportunity to see what the American Blue breed truly has to offer. In November 2022, I purchased three American Blue cross steers that were ready to be processed. Each steer did have a different percentage of Ameri-

can blue mixed with other English type breeds. We dry aged the beef for a minimum of 14 days before processing; these steers impressed me.

As a business owner and butcher YIELD! is the word in our industry. These cattle did NOT disappoint! Each steer yielded 75 to 80% of total overall yield off our carcass weight vs. actual retail cuts and usable parts. As I processed each beef, I noticed each beef had considerably less fat than most cattle would have at this size. So, in my industry that means less waste. I'm able to get these beautiful cuts with less trim. The ribeye section of the beef but most notably the short loin section, that's where the t-bones or strip steaks/ filet come from, I yielded another three or so steaks off each beef.

I personally take customer feedback very seriously in my business. I had numerous upon numerous people give feedback. Customers that we had been selling our own beef to would message me saying their ribeye was so tender they could cut it with a fork. I had a family member tell me the same thing



Continued on pg. 23



about the t-bone. Another customer told me the filets were the best they ever had. I had several repeat customers that bought briskets tell me it was the absolute most tender, most flavorful cut they have ever cooked. The list continues. The marble on these cuts were different but when consumed they blew away anything else they had ever eaten.

As a butcher, I can fully tell tenderness of the meat as I cut it and these American Blues fully surpassed any other breed I've ever cut as far as smoothness on my knife and smoothness of the cut. If you want super high yield and some of the most tender, flavorful meat, please educate yourself on the American Blue Breed of cattle. I'm completely sold on this breed, and we have a very large amount of our personal herd bred to American Blue bulls.

Beard Brothers Meats N More
Coweta/Broken Arrow, Oklahoma

With over thirty years in the meat processing industry and the past four years at Fischer's, I had to let you know about your animal. I am not that familiar with double muscled or Belgian Blue beef, so my first impression while breaking down your animal was "wow, this will be a very tough beef". This was due to the fact that it had very little fat cover or marbling, but I could not have been more wrong. I have cut prime, choice, and Kobe beef, as well as numerous show animals including grand and reserve champions from some of the largest shows in Texas, so I know my beef. Not only was the yield 20 to 30% higher, but yours was the most tender of any beef I have ever cut. I honestly was blown away by this animal and look forward to your future business.

Ronnie Vaughan
Fischer's Meat Market
Muenster, Texas.



2024 Premier Bull - EGKK MAGIC PEDRO



**2024 National Grand Champion American Blue Bull
Owned by Steve and Rose Wagner**

2024 Premier Cow - SRD PASSION BEAR



**2024 National Grand Champion Cow
SRD Passion Bear
Owned by Pampered Maiden Farm and Cedar Creek Farm**

Pampered Maiden Farm and Cedar Creek Farm were proud to own and raise SRD Passion Bear. She was awarded the Female Grand Champion and Premier Cow for 2024.

Thank you Junior Sponsors!

The logo for Kimes Ranch features the word "KIMES" in a red, stylized font above the word "RANCH" in a smaller, red, sans-serif font. A red horizontal line with a slight curve is positioned between the two words.The logo for Wrangler features the word "Wrangler" in a bold, black, serif font.The logo for HOOEY features a circular icon containing a stylized horse head profile, followed by the word "HOOEY" in a bold, black, sans-serif font.The logo for Lewis USA Cattle Order Co. features the word "LEWIS" in a large, blue, serif font, with "USA" in a smaller, blue, sans-serif font below it. Underneath is "Cattle Order Co." in a red, cursive font, and "EST. 1966" in a small, red, sans-serif font at the bottom.The logo for American Blue Cattle CRK FARMS features a black silhouette of a cow in a field, enclosed in a square frame. Above the frame is the text "American Blue Cattle" and below it is "CRK FARMS" in a bold, black, sans-serif font. At the bottom, it says "EST. ★ 2020" and "Wakarusa, Indiana".The logo for Richmond's Feed, Pet & Boutique is a black circle with white text. The text reads "Richmond's Feed, Pet & Boutique" and "THE BEST A FEED STORE" around the bottom edge.The logo for Lone Star Silversmith features a blue star inside a black circle, with the words "LONE STAR" in a blue, serif font above it and "SILVERSMITH" in a large, black, serif font below it.A large, bold, red letter "F" logo.The logo for Texas Roadhouse features a stylized globe with a fork and knife, with the word "TEXAS" in a large, red, serif font and "ROADHOUSE" in a smaller, red, sans-serif font below it.The logo for Weaver Livestock features the word "WEAVER" in a large, white, serif font with a purple outline, and "LIVESTOCK" in a smaller, white, sans-serif font below it, all set against a purple background.

We could not express enough gratitude for your generosity! Your corporate sponsorship and partnership has been an incredible benefit to our junior members, and we are so grateful for your kindness. Our appreciation is immeasurable for your trust in us and contribution to our youth.

Schlichte-Petty Cattle Co.

"Home of Champions"

Offering fullbloods, crossbreds, club calves,
semen and healthy meat.



Fullblood



Fullblood



3/4 Blood



3/4 Blood



3/4 Blood

Find us on Facebook for additional pictures and information. Semen sales are soaring for crossing to produce fantastic club calves.

"The kind that catch a judge's eye."

Like us on Facebook



Schlichte-Petty Cattle Co.

Home of Champions

25014 K42 • Merrill, Iowa 51038

slickcattleco@gmail.com

bs.cindy@gmail.com

712-540-2639 • 712-540-9109

2024 Premier Breeder SRD AMERICAN BLUE CATTLE



What a great honor to win the 2024 Premier Breeder award at the Tulsa National Membership Banquet. SRD American Blue Cattle is owned and operated by Steve Dollarhide and family from Haworth, Oklahoma. We have worked hard for many years to achieve quality cattle. The American Blue Cattle Association and its wonderful members have been a great organization to help raise our kids in and allow them to form excellent responsibility and work habits. I look forward to involving my grandchildren in the American Blue Cattle Association. We have been blessed with many lifelong friendships within this organization. I would like to thank everyone that has helped us through the years.

Breeding Up To Fullblood Status

In order to breed up to Fullblood status here are the requirements:

Fullblood bulls are those that are 96% American Blue and above and will be recorded as Fullblood.

Fullblood Females are those that are 93% American Blue and above and will be recorded as Fullblood.

To be recorded as fullblood the grade up animals must be DNA tested to have two copies of the myostatin gene. If the animal has only one copy they remain in the purebred status.

Purebred Bulls are those that are 15/16 or 93.75% up to 96% American Blue.

Purebred Females are those that are 7/8 or 87.5% up to 93% American Blue.

All Fullblood and Purebred cattle must be DNA tested. If the fullbloods are parent verified from birth by DNA testing, they will have an elite status. Those cattle that are bred up to fullblood status must have all generations of the American Blue lineage verified and have a parent verified status. All purebred cattle with parent and previous generations of American Blue testing will have the status of "Parent Verified".

Percentage animals must be registered in order to be shown, but it is up to the breeder if they want to DNA test these animals or opt out of the DNA testing on any percentage animal up to purebred status.

KEESEE FARMS

American Blue Cattle



For Sale

Bulls & Heifers

¼ Breeds to Fullbloods

Semen Available

James & Mary Keesee
870-699-4498

Steve & Tammy Keesee
870-699-4606

215 Peach Street
Prattsville, AR 72129
Email: kzcountry@hotmail.com

Membership Benefits

As a member of the American Blue Cattle organization, the following are some of the many services and programs we offer members.

- Complete Registry
- Youth Program
- Scholarship Program
- State Affiliates
- Listing in the Membership Directory
- Internet Advertisement in the Membership Directory
- Link your site to ABCA
- Listing on the ABCA Website Members Directory
- Free Classified Ads
- Breeder Referrals
- Parent Verification & DNA Testing
- Internet Updates
- Advertising on the Internet
- International Recognition and ABCA is a member of the American Blue International (BBI) Association



*Photos by
Erin Patterson*

2024 Officers

CHUCK KINNISON, PRESIDENT

11564 Pierce Rd.
Wakarusa, IN 46573
Ph: 574-320-6446
Email: crkblues@yahoo.com

BRAIDEN GARCIA, VICE-PRESIDENT

10350 Blackberry Springs Rd
Guthrie, OK 73044
Cell: 405-200-6309
Email: braidengarcia10@yahoo.com

CONNIE BROOKS, TREASURER

Home: 417-759-7916
Cell: 417-840-5464
email: info@mnpfarm.com
www.mnpfarm.com

SANDIE HULL, SECRETARY

4073 Dickson Rd.
Ardmore, OK 73401-7825
sandiehull@yahoo.com
Ph: 580-504-1157

Executive Office

STEVE DOLLARHIDE, EXECUTIVE DIRECTOR AMERICAN BLUE CATTLE ASSOCIATION

400 Onyx Hill Rd.
Haworth, OK 74740
Ph: 580-306-6546
Email: steve@sramericbluecattle
www.sramericbluecattle.com

Board Members

RACHEL DOLLARHIDE

400 onyx Hill Rd.
Haworth, OK 74740
Ph: 580-612-6630
Email: Rachel_Elizabeth_21@hotmail.com

ERNIE GARCIA

10350 Blackberry Springs Rd.
Guthrie, OK 73044
Home: 580-661-2267
Cell: 580-302-4617
Work: 580-695-2219
FAX 580-661-2269
Email: efgarcia59@yahoo.com

STEVE KEESEE

257 Grant St.
Prattsville, AR 72129
Home: 870-917-8869
Kzcountry@hotmail.com

ROSE WAGNER

27817 405 Ave.
Parkston, SD 57366
Ph: 605-505-0454
Email: rosedewald@yahoo.com

STEVE KINSER

986 Rd. 16
Hugoton, KS 67951
Home: 620-544-44909
Office: 620-544-4490
FAX: 620-544-4490
Email: kinsersteve@yahoo.com

Membership Directory

ARKANSAS

Keesee Farm

James Keesee
215 Peach Street
Prattsville, AR 72129
skeesee@keeseefarms.com
www.keeseefarms.com
Home: 870-699-4498
Cell: 870-917-8894

Steve Keesee

257 Grant St.
Prattsville, AR 72129
kzcountry@hotmail.com
Home: 870-917-8869

FLORIDA

Tammy's Way

Tammy Bennett
4253 River Road
Hilliard, FL 32046
tammy.bennett@
evansdelivery.com
Work: 904-632-2090
Cell: 904-219-6219

INDIANA

CRK Blues

Charles, Rebecca Kinnison & Family
11564 Pierce Rd.
Wakarusa, IN 46573
crkblues@yahoo.com
Ph: 317-440-9524
574-320-6446

Zoe Kinnison (Junior)

11564 Pierce Rd.
Wakarusa, IN 45673

Emily Smiley (Junior)

11564 Pierce Rd.
Wakarusa, IN 45673

Membership Directory

Paul Smiley (Junior)
11564 Pierce Rd.
Wakarusa, IN 45673

IOWA

Kyle Kehrli
2795 280th St.
Winthrop, IA 50682
Kyle.kehrli@hotmail.com
Phone: 319-521-7135
www.elmcrestgenetics.com

M & M Patterson Farms, Inc.

Mark Patterson
14285 N. 115th Avenue E
Gilman, IA 50106
marpat@partnercom.net
Home: 641-498-2224
Cell: 515-419-5129
Fax: 641-498-7704

Schlichte Petty Cattle Co.

Cindy Schlichte
Ty and Kylie Petty
25014 K42
Merrill, IA 51038
kpetty@c21prolink.com
Cell: 712-540-2639
Home: 712-540-9109
Fax: 712-938-2449

KANSAS

Sand Kastle Ranch
Steve Kinser
986 Rd. 16
Hugoton, KS 67951
kinsersteve@yahoo.com
kinser3.wix.com/belgiumblues
Home: 620-544-4490
Office: 620-544-4490
Fax: 620-544-4490

KENTUCKY

Honorary Member
Roger & Donna Yoebstl
195 Rocky Hill School Rd.
Smiths Grove, KY 42171
dyoebstl@scrtc.com
Home: 270-749-3476

MISSOURI

D.J. Davis
307 Mount Union Church Rd.
Brumley, MO 65017
Cell: 573-286-5196
hyannis_04@yahoo.com

Jim & Sharon Hunt
5354 S. 20th Rd.
Walnut Grove, MO 65770
jshblues@netscape.com
www.jshblues.com
Home: 417-694-8207
Cell: 417-399-2906

MNP Farm

Connie & Richard Brooks
4773 E. Farm Rd. 48
Fair Grove, MO 65648
mnpfarm@aol.com
www.mnpfarm.com
Home: 417-759-7916
Cell: 417-840-5464

Tarras Farms

Thomas Gruenes & Carrie Wyrick
1055 NE Silt Lane
Spickard, MO 64679
tarrasfarm@gmail.com
facebook.com/TarrasFarms
Cell: 320-309-6968

NEBRASKA

Studnicka, Inc.
Jerry & Sue Studnicka
37147 Navaho Rd.
Ravenna, NE 68869
jstudnicka@gmail.com
Home: 308-745-0388
Cell: 308-440-0768

NEVADA

Lifetime Member
Belgian Blue Organics
Michelle Labrosse
502 N. Division St.
Carson City, NV 89703
rita.soto@cheetahlearning.com
Home: 775-230-0826

NEW YORK

Zachary T. Weber (Junior)
646 Weber Rd.
Bovina, NY 13740
carrie646weber@gmail.com
Ph: 607-832-4767

NORTH CAROLINA

Jonathan Brubaker
Lifetime Member
3271 Brubaker Lane
Asheboro, NC 27205
jonathanbrubaker@yahoo.com
Home 336-629-3957
Cell: 336-465-0702
Fax: 336-629-2603

Tudor Oak Farm

Lifetime Member
Harold Brubaker
215 Back Creek Church Rd.
Asheboro, NC 27205
hjbrubaker@yahoo.com
www.bluefarm.net
Home: 336-629-4202
Office: 336-629-5128
Cell: 336-302-4663
Fax: 336-629-2603

OHIO

Parados Farm
Lifetime Member
Jeff & Deb Williams
9957 SR5
Kinsman, OH 44428
pdf.7579@gmail.com
Home: 330-876-3118
Office: 330-876-5555
Fax: 330-876-0103

OKLAHOMA

James & Elizabeth Allgood
P.O. Box 1911
Blanchard, OK 73010
johndeerman428@aol.com
Home: 405-823-4844

Haven & Tessa Anderson

(Juniors)
400 Onyx Hill Rd.
Haworth, OK 74740

Ashlyn Augustine
22965 NS 421 Rd.
Nowata, OK 74048
augustineacresllc@gmail.com
Ph: 605-430-0871

Membership Directory

**BGB Black Gold Blues
Larry Don & Sandie Hull**
4073 Dickson Rd.
Ardmore, OK 73401-7825
sandiehull@yahoo.com
Home: 580-504-1157

Rachel Dollarhide
400 Onyx Hill Rd.
Haworth, OK 74740
Rachel_Elizabeth_21@Hot-
mail.com
Ph: 580-612-6630

Steve Dollarhide
400 Onyx Hill Rd.
Haworth, OK 74740
stevedollarhide@yahoo.com
www.sramERICANbluecattle.com
Cell: 580-306-6546

**Cedar Creek Belgian Blue Farm
Ernest Garcia**
10350 Blackberry Springs Rd.,
Guthrie, OK 73044
efgarcia59@yahoo.com
Home: 580-661-2267
Cell: 580-302-4617
Work: 580-695-2219
Fax: 580-661-2269

Nathan and Kristina Garcia
16575 W. Gregory Terrace
Yukon, OK 73099
Ph: 405-590-3948
Kfd343@yahoo.com

**Cedar Creek Farm
Tylor and Braiden Garcia**
10350 Blackberry Springs Rd
Guthrie, OK 73044
Braiden Cell: 405-200-6309
Tylor Cell: 580-819-0732

**Cedar Creek Farm
Dalton Garcia (Junior)**
16575 Gregory Terrace
Yukon, OK 73099
Phone: 405-590-3948

Antonio Garcia (Junior)
16575 Gregory Terrace
Yukon, OK 73099
Ph: 405-590-3948

**Pampered Maiden Farm
Charles C. Weddle, Jr.**
8151 E. Sorghum Mill Rd.
Edmond, OK 73034-9526
ccwJr46@aol.com
Home: 405-340-2618
Cell: 405-306-6531
Fax: 405-341-9372

SOUTH DAKOTA
Emma Wagner (Junior)
27817 405 Ave.
Parkston, SD 57366
Ph: 605-505-0454

Everett Wagner (Junior)
27817 405 Ave.
Parkston, SD 57366
Ph: 605-505-0454

Steve & Rose Wagner
27817 405 Ave.
Parkston, SD 57366
rosedewald@yahoo.com
Ph: 605-505-0454

TEXAS
**Blue M Cattle Co.
Dwain & Melanie Moyer**
5602 Burgundy Drive
Greenville, TX 75402
dwain@bluemcattlecompany.com
BlueMcattlecompany.com
Ph: 903-456-0164

**Jones Cattle Co.
Lifetime Member
Stanley Jones**
P.O. Box 631123
Nacogdoches, TX 75963
jonesentltd@sbcglobal.net
www.bellebrook.com
Home: 936-564-5581
Office: 936-564-7889
Cell: 936-554-8075
Fax: 936-569-6641

CANADA
**La Gantoise
Marie J. Goubau**
1489 Concession 1
Lefaiivre, ON K0B 1J0 Canada
eurogene@hawk.igs.net
Home: 613-679-4133
Fax: 613-679-4061
www.lagantoise.com

Junior Highlights

Emily Smiley



My name is Emily Smiley, and I am the daughter of Chuck and Rebecca Kinnison. I live in Northern Indiana and have been showing blue cattle since we started breeding them five years ago. I am a senior in high school and have loved meeting new friends through 4H and at our national show in Tulsa every year. My goal is once I graduate to go into a college to study sonography. My favorite memory is watching our first calf be born on the farm.

Junior Highlights

Zoe Kinnison



My name is Zoe Kinnison, and I am the daughter of Chuck and Rebecca Kinnison. I live in northern Indiana and have been showing blue cattle since we started breeding them five years ago.

I am a senior in high school and have loved meeting new friends through 4H and at our National show in Tulsa every year. My goal is once I graduate to go into a college to study to become a Vet Technician. My favorite memory is watching our first calf be born on the farm.

Emma Wagner is 14 years old and in the 8th grade. She is the daughter of Steve and Rose Wagner.

Emma is active in FFA, Basketball, 4-H, showing her cattle in open class shows and riding horses. In 2024, Emma has won National Grand Champion Bull, Overall Grand Champion Market Steer, Grand Reserve High % Heifer, Junior Showmanship and won Jr. High Points. Emma and her brother, Everett, have overcome a few obstacles in 2024 with the loss of their brother, Easton, in a farming accident.

The Blues have helped them through their grief. Emma starts halter breaking the new show calves as soon as they are weaned. When things get overwhelming you can find her sitting in the hay talking to her show cattle or riding her horse, Lady, bareback in the pasture or just laying on her while she is grazing. One of Emma's favorite quotes from Johnny Cash is "Life's rough so you gotta be tough".

Emma Wagner



Everett Wagner



Everett Wagner, age 7, is in first grade. He is the son of Steve & Rose Wagner.

Everett is the brother of Emma Wagner. He is in flag football this year for the first time and he loves wrestling, just like his late brother Easton did.

This will be Everett's second year showing in open class shows. In 2024, he won the PeeWee showmanship, his goal is to win it again in 2025. In 2025, he is proud to be showing his bull Carter. In 2024 after the passing of his brother, he decided he was going to show Easton Steer at the show, at that time Mickey (Easton Steer) had quit eating. When Everett started working with Mickey he started eating again. Mickey was Easton's bottle baby who was a twin to one of Emma's heifers she showed. Everett took great pride into showing his brother's steer for him.

Junior Highlights

Paul Smiley



My name is Paul Smiley, and I am the son of Chuck and Rebecca Kinnison. I live in Northern Indiana and have been showing blue cattle since we started breeding them five years ago. I am going into the 7th grade of middle school and have loved meeting new friends through 4H and at our national show in Tulsa every year. I hope that I can continue to show.

Dalton Garcia



Dalton Garcia is 18 years old. He started showing American Blues at the age of 11. He has been active in FFA for EL Reno as well as showing other breeds of cattle. Dalton holds an officer's position for the EL Reno FFA and is very active in farming and welding.

Cruz Garcia



Cruz Garcia is 12 years old and has been showing American Blues and other breeds of cattle along side his brother Dalton since the age of 10 years old. Cruz is active in the rodeo and has won multiple buckles since he was 3. Cruz loves helping Grandpa Ernie on the farm along with Dalton in the summer time.

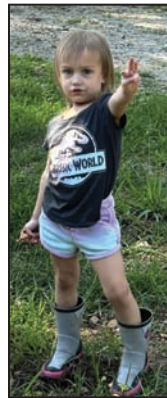
Haven Anderson



Haven Anderson, daughter of, Rachel Dollarhide, age 6, grows up on SRD Blues Farm in Hawthorn, Oklahoma. She enjoys helping her Pop (Steve Dollarhide) feed and water the animals and gather eggs. She has just started walking her own Blues and

her first and favorite baby is SRD Minnie. She also enjoys drawing, dancing, swimming and crafting with her Doe. When she grows up, she wants to be a physician assistant like her Mama.

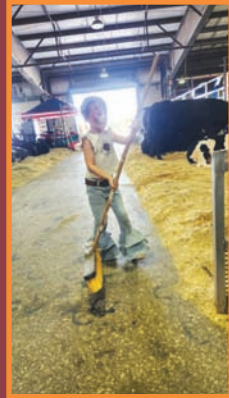
Tessa Anderson



Tessa Anderson, daughter of Rachel Dollarhide, age 3, also resides on SRD Blues Farm. She helps her Pop (Steve Dollarhide) feed and water the animals. She loves riding the four wheeler, playing in the feed, and singing "paw patrol" as they deliver the feed. She mimics

what her older sister does, helps Doe with her dogs, and loves to sing and swim. When she grows up, she wants to be a firefighter.

Junior Highlights at National Show



Junior Member Benefits

Cattle Registrations



Ken Schlichte
Memorial College
Scholarship

Junior High Point
Champion & Reserve
Champion awarded
yearly



To Join The
American Blue
Cattle Association
PLEASE FILL OUT THE
MEMBERSHIP
APPLICATION



More information at
www.americanbluecattle.org

Annual Scholarship Program

To register for our annual scholarship program, download the application from the website: www.americanbluecattle.org and mail to:

American Blue Cattle
Association, Inc.
P.O. Box 165
Haworth, OK 74740

Criteria for the Scholarship Program

- Enrolled in a 2 or 4 year college
- Age 18-22
- ABCA Junior Member for a minimum of one year
- Must be a U.S. citizen
- May only receive the scholarship once
- Be a ABCA Junior Member in good standing
- Youth or family own American Blue Cattle

Registering an Animal

To register an animal go to www.americanbluecattle.org and print the form and send it to American Blue Cattle at:

American Blue Cattle Association, Inc.
Phone: 580-612-2583
P.O. Box 165
Haworth, OK 74740

Your registration application will be processed and a DNA Form will be emailed as soon as full payment is received. Prices subject to error and change without notice.

Tattoo Letters

2027 Tattoo Letter is "R"	2018 Tattoo Letter is "F"
2026 Tattoo Letter is "P"	2017 Tattoo Letter is "E"
2025 Tattoo Letter is "N"	2016 Tattoo Letter is "D"
2024 Tattoo Letter is "M"	2015 Tattoo Letter is "C"
2023 Tattoo Letter is "L"	2014 Tattoo Letter is "B"
2022 Tattoo Letter is "K"	2013 Tattoo Letter is "A"
2021 Tattoo Letter is "J"	2012 Tattoo Letter is "Z"
2020 Tattoo Letter is "H"	2011 Tattoo Letter is "Y"
2019 Tattoo Letter is "G"	2010 Tattoo Letter is "X"

Pay your animal registration fees online: You can now pay your animal registration fees online using PayPal. Use the Registration in Word format - Open the document and type in the information on the application, save it and attach it to an email to info@belgianblue.org. Total your registration fees, click on the pay now button and you will be prompted to enter the donation amount on the PayPal page. We will match the emailed registration with your payment.

Animal Registration Fees

- * \$25.00 Registration of Fullbloods and Purebreds
- * \$40.00 DNA Kit
- * \$15.00 Registration of Percentage Grading-Up (50% To Purebred)
- * \$15.00 Certification of Percentage (Up To 50%)
- * \$15.00 Certification of Steers
- * \$30.00 Myostatin Gene Test

Miscellaneous Fees

- * \$10.00 Duplicate Corrected / Additional Certificates
- * \$10.00 Animal Transfer of Ownership
- * \$10.00 Embryo Transfer of Ownership
- * \$10.00 Listing of Foreign Registered Animal in ABCA Herdbook
- * \$10.00 Entering Foreign Bloodtype or DNA Genotype at UC Davis
- * \$30.00 Rush charges for any paper work in addition to regular fees

ABCA American Blues Junior Awards

ABCA has developed an awards program for its Junior exhibitors. The purpose of this program is to encourage development of our Junior cattle-men and women and to promote the American Blue breed.

To be eligible for the program the youth should not have reached his/her 21st birthday.

Awards will be given for the top Junior and the Reserve Junior. To be awarded the honor of top Junior, the young man or woman must be a Junior member of ABCA and accumulate points on the following scales. Open show sanctioned for youth points is: Tulsa State Fair - National Show. Cattle must be family or farm owned for at least 30 days prior to the show. Entry must be in juniors' name to qualify for class and overall points.

Showmanship points are only earned at sanctioned shows.

National Show Class Placings

- 30 points 1st Place
- 25 points 2nd Place
- 20 points 3rd Place
- 15 points 4th Place
- 10 points 5th Place
- Additional 30

- points Overall American Blue Grand Champion
- Additional 20 points Overall American Blue Reserve Grand Champion

Showmanship

- 25 points 1st Place
- 20 points 2nd Place
- 15 points 3rd Place
- 10 points 4th Place
- 5 points 5th Place

All other shows, including **county fairs, state fairs, 4-H & FFA, Expos and Open Show Class Placings:**

- 20 points 1st Place
- 15 points 2nd Place
- 10 points 3rd Place
- 5 points 4th Place
- 3 points 5th Place
- Additional 20 points Overall Grand Champion
- Additional 10 points Overall Reserve Grand Champion

Rate of Gain

- 20 points 1st Place
- 15 points 2nd Place
- 10 points 3rd Place
- 5 points 4th Place
- 3 points 5th Place

Presentations

Any display or speech (at least 10 minutes in length) that promotes the Blue breed.

- 1-10 people 20 points
- 11-50 people 30 points
- 51+ people 40 points

Presentations must be verified in writing by person in charge of event such as FFA Advisor or 4-H Leader. Displays/presentations points can only be earned at one event at each fair.

Points are accumulated beginning in January and must be turned into the ABCA office by December 15.

Juniors may show any number of head at each show but points will only accumulate for four head.

Verification

To receive points the junior exhibitor must submit verification in the form of show results signed by the show superintendent or show results intended for public knowledge such as photos or articles in the media.

Send by December 15 to : American Blue Cattle Assoc., P.O. Box 165, Haworth, OK 74740

POLLED - HIGH YIELDING - FUNCTIONAL AMERICAN BLUE CATTLE



Last Straw

out at work. He really was my last straw of his sire Glouton De Peroy. This was the bull that first caught my eye and peaked my interest in the Blues. He had a nice balance of performance and calving ease. He was also one of the only Istamboul De Caremberg bloodline bulls in the US. He is an outcross.



Cristal Granite

**2002 Grand Champion Full Blood Bull
All bull of choice for this year calves.**



Zion

Used some young blood on first calf cows. Zion is a son of King Davydd and out of a Hebrew blood line cow. He is possible homozygous polled. He is thick topped and muscular. Should be easy calving and produce some nice calves



SKSL King Davydd

was 2019 National Grand Champion High % bull. At a little over 15 months old, his wt. was 1356 lbs. and 17.8 in loin eye. He is homozygous for polled and Blue myostatin genes. Son of Confetti.

SAND KASTLE RANCH

Steve Kinser

986 Rd. 16

Hugoton, KS 67951

Ph: 620-544-4490

Email: kinsersteve@yahoo.com

MNP *Farm*

Richard & Connie Brooks
4773 E Farm Rd 48
Fair Grove, MO 65648
417.840.5464, cell
mnpfarm@gmail.com

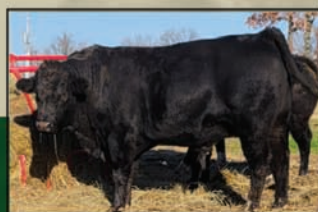
Check out our website for more information!
www.mnpfarm.com



MNP *History...*



Follow us on Facebook



Jones Cattle Company

Belle Brook Farms



Photos by Andrew D. Brosig/The Daily Sentinel

Belle Brook Farm owner Stanley Jones watches some of his Belgian Blue cross cattle as they pass by in the feed lot on the farm Wednesday in Nacogdoches. Jones began raising the Belgian Blue cattle more than 20 years ago because they produce a leaner, healthier meat. He crosses them with a mix that includes Charolais and Brahman for hardiness, keeping a minimum of 50 percent Belgian to insure the lean breeds through, he said.

SEMEN AVAILABLE • SPECIALIZING IN BLACK GENETICS

ALWAYS READY TO MEET YOUR NEEDS FOR ALL NATURAL AMERICAN BLUE BEEF

CALL FOR A FREE CATALOG 1-800-830-2354 AND VISIT OUR

WEBSITE WWW.BELLEBROOK.COM

BETTER FLAVOR • LESS FAT • MORE TENDER



P.O. Box 631123
Nacogdoches, TX 75963
Phone: 936-564-7889
Fax: 936-569-6641
Contact: Stanley Jones



TUDOR OAK FARMS

"The Nation's Leading American Blue Genetics"

OUR HERD IS 100% ELITE STATUS



TOF GRANT

**Congratulations to LAMAR RUPPERT, Mechanicsburg, PA.
TOF GRANT has been added to his herd.**

**TOF GRANT Combines NEW Genetics in the USA
from Greystone Farm in England**

- **Franchi De La Bonne Raie**
- **Greyston Artic**
- **Greystone Chanel**

Harold, Geraldine,
Jonathan, Megan, Grant, Justin & Vi Brubaker
215 Back Creek Church Road
Asheboro, NC 27205
Email: hjbrubaker@yahoo.com
Cell 336-302-4663
www.bluefarm.net

