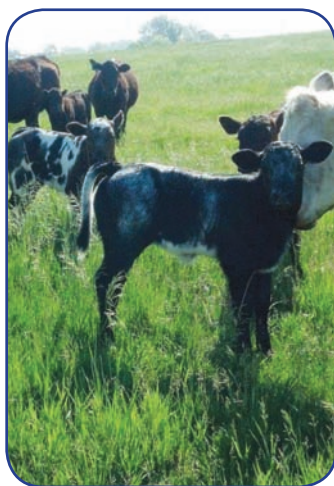
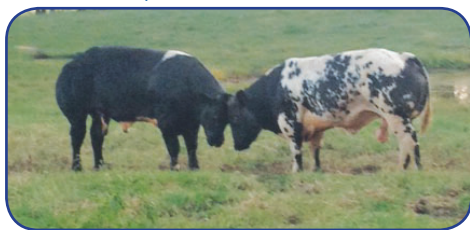


AMERICAN BLUE CATTLE



2015
JOURNAL

www.americanbluecattle.org



American Blue Cattle



SRD Alex's Dagger ET



SRD Black Ridge



SRD Blue Captain



SRD Black Tornado



SRD Black Block



SRD Top Notch

**FULLBLOOD • PUREBRED • PERCENTAGE
BREEDING STOCK AVAILABLE**

*Quality
Genetics*

Steve Dollarhide
400 Onyx Hill Rd.
Haworth, OK 74740
<http://www.sramERICANbluecattle.com/>
steve@sramERICANbluecattle.com

*Specializing
in
Black*

KEESEE FARMS

American Blue Cattle



For Sale

Bulls & Heifers

$\frac{1}{4}$ Breeds to Fullbloods

Semen Available

James & Mary Keese
870-699-4498

Steve & Tammy Keese
870-699-4606

215 Peach Street
Prattsville, AR 72129
Email: kzcountry@hotmail.com



July 26, 2015

Dear Fellow Blue Breeders:

Fall time is show time for the Blues. Our National Show and annual meeting for the American Blue Cattle Association will take place in Tulsa Oklahoma. Please view our website for time and location for our activities at Tulsa.

What a year this has been, interest in the American Blues is increasing with people looking for breeding age bulls and heifers all across the country. Our registration activity has increased and new members from all over the country have joined our membership base. Kids are looking for show animals and people are looking for blue meat.

We believe part of our interest comes from your association advertising in top quality magazines as we spread the word.

As we continue to grow and promote the benefits of Blues – ie – improved feed conversion and a higher percentage dressing weight. Let us remember to “Put a little **BLUE** in everything you do.”

Sincerely,

Harold Brubaker
President

HJB/pg

Table of Contents

Letter from the President.....	2
Here's to the "New" Blue.....	4-7
Premier Breeder.....	8,9
Premier Cow.....	9
Premier Bull.....	9
Jr. High Point.....	10
Arkansas Show.....	10
2014 National Show, Tulsa.....	11-17
Scenes from 2014 Tulsa..	18
'15 Tulsa Show Agenda..	19
Application.....	23
New Members/Benefits..	24
Membership Directory.....	25-31
Scholarship Information..	32
Registering Cattle.....	32
Jr. Members Benefits.....	34
Cattle photos.....	36
Benefits of Crossbreeding..	39
Why the Blues?.....	39

Advertisers

Black Gold Belgians.....	37
Confertel.....	22
Elmcrest Genetics/Kehrli Kattle	20-21
Jones Cattle Co./Belle Brook Farms...Ins Bk Cov	
JSH Blues.....	3
Keesee Farms.....	1
Kountry Blues.....	38
MNP Farm.....	40
Schlichte-Petty Cattle Co.	35
SR American Blue Cattle....Ins. Frt. Cov.	
Tudor Oaks Farms Bk Cover	

On the Cover

The photo featured at the top is a pair of two year old fullblood bulls raised

by Steve Dollarhide of SR American Blue Cattle, Hawthorn, Ok. The black one is SRD Alex's Dagger ET. His sire is a mainly black bull from England (Ballygrange Alex) that won several shows. Dagger is currently the herd bull and his first couple of fullblood calves are young but showing good structure. The spotted bull is SRD Rock Star. Rock Star's sire was Captain De-Somme.

The bottom two photos are American Blue Crossbred calves, from Schlichte-Petty Cattle Co., enjoying some lush Iowa grass on a warm summer day. Crossing with American Blues increases your weaning weights and therefore increases your wallet!!!!

JSH BLUES

**Fullblood Cattle • Percentage Cattle
Embryos • Project Calves**



Jim & Sharon Hunt

5354 S. 20th Road

Walnut Grove, MO 65770

Home: 417-694-8207

Mobile: 417-399-2906

E-Mail: jshblues@netscape.com

www.jshblues.com

**FOR SALE: FULLBLOOD AND PERCENTAGE
BULLS, HEIFERS AND FEEDER STEERS**



**European and American Genetics
Colors from White to Blue to Black**

**"WE CAN HELP YOU WITH THE VERY
BEST BEEF YOU WILL EVER EAT."**

American Blue Cattle - 3

Here's to the “New” Blue



Steve Kinser, Sand Kastle Ranch near Hugoton, KS, with some help from the very capable Miss Lacy DeShazo of Bokoshe, OK, accepts the award for Grand Champion Halfblood bull at the 2012 Tulsa State Fair. The bull is ½ Blue and ½ Blue X, with Angus on the top and Gelbvieh on the bottom.

JACQUES FARM PHOTO

Years of positive development pay off
for breeders of American Blue Cattle

BY JAIME PULLMAN

While they may look like the Arnold Schwarzenegger of the cattle industry, they are gentle giants,” says Steve Dollarhide.

The body-builder-like cattle are the **American Blues**, our country’s version of Belgian Blues, developed with a focus on the unique muscling genetics of their Belgian ancestors, while improving calving ease and lowering birth weights to get away from the caesarian section stigma Belgians often carry.

“Their undeniable ability to add edible meat and bulk to other breeds of cattle differentiates the American Blues from any other breed of cattle,” says Dollarhide, of Haworth, Oklahoma, an American Blue producer for more than 10 years, and Vice President of the **American Blue Cattle Asso-**

ciation. “American Blues can add the muscle and increase the weight gain naturally,” he adds. “This could satisfy many consumers who are looking for more organic alternatives.”

Dressing out between 68 and 72 percent, American Blues have one of the highest yielding carcasses in the industry. The breed’s extraordinary muscle development is due to an inactive myostatin gene.

“The myostatin gene typically limits muscle development, but the inactive form allows for a change from *hypertrophy* to *hyperplastic* muscle growth,” explains Steve Kinser, Treasurer of the American Blue Cattle Association and a producer in Hugoton, Kansas. “Instead of developing longer, thicker, courser muscle fibers, an animal with this trait can have twice the number of



American Blue Cattle are large-framed with exceptional muscling due to an inactive myostatin gene. High-yielding carcasses are an obvious result of this muscle growth.

muscle fibers per muscle bundle, but the fibers will be finer and shorter. They do not have any extra muscle bundles, just each muscle bundle is larger and the volume of tough connective tissue is reduced. This trait also reduces the deposition of fat to create a very lean product.”

American Blue beef also has some of the healthy attributes that are important to modern consumers, along with flavor. Certified American Blue ground beef contains 7 grams of fat, compared to 30 grams for regular USDA ground beef and 10.5 grams of USDA average chicken breast (with skin). Protein matches up at 25 g for Blue, 18.78 for regular USDA ground beef, and 23.7 for chicken, and cholesterol tests at 64 mg for Blues, 96 mg for regular USDA ground beef, and 72.1 for chicken breast.

And the leanness doesn’t impact tenderness. A 3-year test done by the USDA’s Meat Animal Research Center in Clay Center, Nebraska found that

Blue crossbred cattle had a lower shear value than the contemporary average of Hereford-Angus; 12.8 versus 12.9, with comparable tenderness and flavor, less fat cover (0.21 inch versus 0.45 inch), 16% less marbling and 14.2% more ribeye.

Kinser says that the need in Europe to produce a large amount of meat on a small amount of land has rewarded breeders with the heaviest calves, with Blues sometimes selling for more than twice that of other breeds. But the size comes with a different kind of price.

“This economic pressure has persuaded breeders in Belgium to breed for the heaviest muscled calves they can get at birth to get this extra value. So they are basically breeding for calving difficulty knowing that a C-section is just a small added expense for that high value calf,” says Kinser.

In order to separate themselves from the C-section reputation, and by promoting and developing easy calving bloodlines with a focus on conforma-

American Blue Cattle

BREED: American Blue Cattle

COLOR: White, blue roan, or black.

ANCESTRY: The American Blue began as the Belgian Blue, which originated in central and upper Belgium when the local red-pied and black-pied cattle were crossed with Durham Shorthorn in the late 1800s. Some Charolais influence during the 19th century is also suggested.

HISTORY: Originally a dual purpose breed, beef production became the focus following World War II, when Europe's economy demanded increased beef quality and quantity. During the 1950s, the Belgian cattle underwent a selective genetic breeding and development program conducted by Professor Hanset at the AI Center in the Province of Liege. This program created their unusually heavy muscling.

The first Belgian Blues were imported to the United States in 1978. Today, American Blue Cattle are their own fullblood registered breed, independent from their Belgian relatives after years of

breeding for easier calving, lower birth weights, and improved structural soundness.

BREED CHARACTERISTICS: Large framed cattle with exceptional muscling due to an inactive myostatin gene, and therefore high-yielding carcasses. They are known for quiet temperament, early maturity, short gestation, hardy calves, adaptability, excellent feed conversion, and tender lean meat.

QUALITY AND YIELD: Yield mostly 1s, grade 80% Select due to lack of marbling, but tenderness overrides the lower grade in taste tests.

WEIGHT: Mature fullblood bulls can average up to 2750 lbs., and fullblood mature cows to 1650 lbs. Average birth-weight for fullblood Blues is 96.8 lbs. and 79.9 lbs. for a crossbreed.

NATIONAL ORGANIZATION AND REGISTRY: The American Blue Cattle Association located in Nacogdoches, Texas. For more information: Visit the association website at www.america-bluecattle.org or call 936-652-2550.

tion at birth (ideal calves are low muscle at birth but high muscle at 3 to 4 months old), British and American breeders have renamed their cattle British Blues and American Blues, respectively.

European Origins

The Belgian Blue originated from Shorthorn and Friesian cattle, with some Charolais influence, in Belgium during the late 1800s. They were primarily dual purpose until the 1950's when heavy muscling was developed during a selective breeding process. Belgian Blues arrived in the U.S. for the first time in 1978. American producers have been putting their stamp on the breed ever since.

Despite their heavy muscling, American Blues are very feed efficient. The average Blue cross feeder requires just under 7 lbs. of feed per pound of gain. In addition, research has shown that increased muscle size is associated with smaller organ size, resulting in reduced voluntary feed intake and increased feed efficiency.

Dollarhide says American Blues are versatile, can do well on pasture or in the feedlot, and will convert feed to edible meat on any breed or frame of cattle.

In addition to their impressive yields, American Blues are also docile and adaptable to a variety of climates and production environments.



Though there is a lot going for them, the breed still has some challenges, particularly overcoming negative stigma associated with calving problems.

“The number one issue the American Blue breed faces is fear of large birth weights and cesarean sections,” explains Dollarhide. “While that was a concern and a problem when the breed first entered the United States in the late 1980s, American Blue breeders have worked diligently with the proper genetics to lower birth weights and improve feet and leg structure for overall soundness. Today, the only time a C-section is performed in the breed is when someone is breeding fullbloods and they cross the wrong genetics or exceed nutrition requirements. In crossbreeding operations, a breeder will not experience any more calving difficulties when using American Blues than the breeder would with any other breed.”

Stanley Jones, of Jones Cattle Company in Nacogdoches, Texas took a chance on Blues almost thirty years

ago for the leaner, healthier beef and hasn’t looked back. Jones started crossbreeding with genetics obtained from Canada, and later imported the first live Blues ever brought to the United States directly from Europe. Today, he raises and markets fullblood American Blues and crossbreed calves.

“Cattlemen in this country can benefit from American Blues’ outstanding muscle development, ease of calving for crossbreeds, exceptional lean tender meat, excellent feed conversion, and high yielding carcasses,” Jones shares.

“The best way to start breeding American Blue cattle is to start a crossbreeding program,” Jones advises. “Then ask yourself why you did not start years ago.”

Reprinted with permission from “Working Ranch Magazine.”

2014 Premier Breeder Elmcrest Genetics and Kehrli Kattle

It was great honor in Tulsa in September 2014, when Elmcrest Genetics and Kehrli Kattle won the Premier Breeder award. Thinking back on the many years in the purebred industry we always had a love for cattle during the time that we were very active in the swine industry. We learned how you combine opportunity, a good product, youth, and hard work to make a breed better. We also leaned to study the poultry and swine industries to see where the cattle industry is headed. We never believed that the swine industry would follow the poultry industry; sad to say, it followed the blueprint very closely. At one time in the hog business we found that all of our customers had been told by their packers that they needed to begin using terminal cross boars on their sows to stay in line with new packing standards. I firmly believe that in the cattle industry we will see the same thing. The packer will instruct their producers to use a terminal cross sire, and this is where the American Blues will have a tremendous opportunity. In the beef industry right now roughly 5% of the bulls sold are what you would call terminal bulls. It's estimated that this need could jump to 30% of total bulls sold in a very short time window. What an opportunity in agriculture!



I first saw the Belgian Blue breed at the Iowa State Fair when they were having their national show. I always appreciated the traits they have to offer. Over the years we have found that structural soundness, whether it was in the swine industry or the beef industry was the number one criteria.

In the year 2000 my son and grandson invited me to go to the National Belgian Blue sale when it was held in Walker, Iowa. I just went to look at the half-blood cattle, and happened to watch the full-blood sale. I saw a bull there that completely suited me as far as structure. He had big feet, his hind legs were where they should be, and he possessed an extended body with a long neck. Palmer wasn't very popular, but he was structurally sound, and heavily muscled enough to help us start our journey with the Blues. We brought him home, and used him on a combination of simmental, shorthorn, and crossbred cows. Palmer's calves displayed their sire's structural correctness, and had the ability to out-perform their sire when it came to muscling. In addition to these qualities, we also expect Palmer's progeny to inherit their sire's gift of longevity. Palmer died three years ago at the ripe age of 15, and was still breeding cows as our main herd bull at the time.

Over the years while showing percentage cattle, we had the opportunity to meet many good people and made many friends in the Blue breed. One of these people was Bob Love from Minnesota, and in 2007 when he decided to retire, we had the opportunity to buy the nucleus of his herd. Bob had brought back embryos from England and several of these were out of Ridgedean Jessie, one of the great

cows in England. We got two direct daughters out of Jessie, and they have done a great job building our Blue herd. Palmer, our English bred bull, was the final piece to the puzzle of breeding Blues that are sound, fast growing, good tasting, and now eight generations of natural calving.

The members of the Blue organization are great and have been very helpful in aiding us in building our herd. Our advice to new members getting started in the breed, "Find the very best females out of a great core family and build from there. Don't wait - the opportunity train is leaving the station - be sure to be on it. American Blue Cattle - Unlimited opportunity, and a chance to help grow more beef for our ever-increasing customers. *Kyle Kehli*

2014 Premier Bull - Swagger 1

We were very honored to win the 2014 Premier Bull of the breed with Swagger I at the national show in Tulsa last September. Both the dam and sire of Swagger I were raised on our farm, and as you can see from his pedigree we have lined up the impressive English-born cow, Ridgedean Jessie, on both sides. Also in the pedigree you will see many good bulls including



our English-bred bull, Palmer. Ridgedean Jessie represents the 6th generation of natural calving in the Ridgedean herd, making Swagger I a representative of the 8th generation of natural calving within the Blues. Swagger I illustrates the soundness expressed by his grandsire Palmer that we are striving to consistently reach within the breed; he accomplishes this feat while also maintaining a good amount of muscling. The founding genetics of the Belgian Blue breed are great ones, but in order to meet our modern day beef needs they must be Americanized; and as the American Blue breed moves forward we feel Swagger I, and bulls like him, can be an important step in making the breed popular and accepted in today's beef industry. It has been truly rewarding to watch him develop from a calf into the impressive bull that he is today. This maturity pattern is an "must-have" factor on our farm when it comes to the retention of breeding stock. Thank you to the past breeders who have made these genetics available to us to produce this bull.

2014 Premier Cow - DeShazo's Lou Lou



The 2014 Premier Cow was DeShazo's Lou Lou. Lou Lou is owned by Mike And Shirley DeShazo of Bokoshe, OK. Lou Lou was also the 2014 Grand Champion Purebred/Fullblood Female.

Rules for Premier Breeder, Premier Bull and Premier Cow are listed on our website: www.americanbluecattle.org

2014 Junior High Point Champion

Congratulations to our 2014 Junior High Point Champion Lane Hull.

Lane is the son of Larry and Sandie Hull of Ardmore, OK.

Currently a sophomore at Dickson High School, Lane is involved in track and weight lifting.

Lane has won numerous awards with his Blues. He has placed first in showmanship and won first in his class in Tulsa and Arkansas state fairs.

Lane loves showing his Blues and helping out on the family farm, BGB Blues.

Congratulations again to this young man for setting a great example for the younger and future juniors that will be showing their Blues!



Lane Hull

2014 Arkansas State Fair

Heifers born March 1, 2014 or later

1st Lane Hull

Heifers born January 1 thru February 28, 2014

1st Stanley Jones

Heifers born November 1 thru December 31, 2013

1st Steve Dollarhide

2nd Charlie Names

Heifers born September 1 thru October 31, 2013

1st and Reserve Champion - Lane Hull

2nd Lane Hull

3rd Stanley Jones

Heifers born July 1 thru August 31, 2013

1st Connie Brooks

Heifers born May 1 thru June 30, 2013

1st and Grand Champion - Steve Dollarhide

2nd Lane Hull

Heifers born January 1 thru February 28, 2013

1st Stanley Jones

2nd Stanley Jones

Bulls born March 1, 2014 or later

1st Steve Dollarhide

Bulls born September 1 thru October 31, 2013

1st and Reserve Champion - Stanley Jones

2nd Steve Dollarhide

3rd Lane Hull

4th Lane Hull

5th Connie Brooks

6th Stanley Jones

Bulls born May 1 thru June 30 2013

1st and Grand Champion

Connie Brooks

Bulls born September 1 thru December 31, 2012

1st Steve Dollarhide

2014 National Show Results

2014 TULSA STATE FAIR SHOW RESULTS **October 7, 2014**

STEERS

Prospect Low & Steer Halfblood or under 400-900 lbs

1. LLB Bue Monroe, Logan Beckham
Elkland, MO

GRAND CHAMPION

Prospect Low % Steer

- LLB Bue Monroe, Logan Beckham
Elkland, MO

Prospect High % Steers Over 1/2 Blood under 15/16

1. EGKK Swaggers Onward,
Kehrli Kattle, Elmcresc Genetics
Manchester, IA

GRAND CHAMPION

Prospect High % Steers

- EGKK Swaggers Onward,
Kehrli Kattle, Elmcresc Genetics
Manchester, IA

Market Low % Steers ½ Blood or Under – Over 900 lb.

1. 20A, Steve Kinser,
Hugoton, KS
2. Mitchells First, Mitchell Taake,
Elkader, IA

GRAND CHAMPION

Market Low % Steer

- 20A, Steve Kinser, Hugoton, KS

RESERVE GRAND CHAMPION

Market Low % Steer

- Mitchells First, Mitchell Taake,
Elkader, IA

Market High % Steers - Over 1/2, under 15/16 - Over 900

1. Swagger Clayton, Mitchell Taake,
Elkader, IA

GRAND CHAMPION MARKET HIGH % STEER

- Swagger Clayton, Mitchell Taake,
Elkader, IA

FEMALES

Halfblood Females - February 1, 2014 & After

1. Star, Laurie Stonewall,
Marengo, IA

Halfblood Female –

October 1, 2013 – January 31, 2014

1. WCM Amorita, R. Wayne Matlock,
Bixby, OK

CHAMPION

Halfblood Calf

- WCM Amorita, R. Wayne Matlock,
Bixby, OK

RESERVE CHAMPION

Halfblood Calf

- Star, Laurie Stonewall, Marengo, IA

Halfblood Females –

June 1 – September 30, 2013

1. BGB Hot To Trot, Lane Hull,
Ardmore, OK

Halfblood Female -

October 1, 2012 - January 31, 2013

1. EGKK Palmers Clubby, Kehrli Kattle,
Elmcresc Genetics, Manchester, IA

CHAMPION

Halfblood Yearling Female

- BGB Hot To Trot, Lane Hull,
Ardmore, OK

2014 National Show Results

RESERVE CHAMPION

Halfblood Yearling Female

EGKK Palmers Clubby, Kehrli Kattle,
Elmcrest Genetics, Manchester, IA

GRAND CHAMPION

Halfblood Female

BGB Hot To Trot, Lane Hull,
Ardmore, OK

RESERVE GRAND CHAMPION

Halfblood Female

WCM Amorita, R. Wayne Matlock,
Bixby, OK

High % Females -

February 1, 2014 & After

1. SKSL Crystal Cora 1B, Steve Kinser,
Hugoton, KS

High % Female -

October 1, 2013 – January 2014

1. BGB JC Grace, Justin Campbell
Miami, OK
2. EGKK Swaggers Ranso, Kehrli
Kattle, Elmcrest Genetic,
Manchester, IA
3. BGB Meg Monkey, Megan Elder,
Miami, OK

CHAMPION

High % Calf

SKSL Crystal Cora 1B, Steve Kinser,
Hugoton, KS

RESERVE CHAMPION

High % Calf

BGB JC Grace, Justin Campbell
Miami, OK

High % Females -

June 1 - September 30, 2013

1. MNP Blue Affluent, Connie Brooks,
Fair Grove, MO

2. WCM Anadarko, R. Wayne Matlock
Bixby, OK

High % Females -

February 1 - May 31, 2013

1. SLFLADYB262, Kehrli Kattle,
Elmcrest Genetics, Manchester, IA

CHAMPION

High % Yearling Female

MNP Blue Affluent, Connie Brooks,
Fair Grove, MO

RESERVE CHAMPION

High % Yearling Female

SLFLADYB262, Kehrli Kattle,
Elmcrest Genetics, Manchester, IA

GRAND CHAMPION

High % Female

SKSL Crystal Cora 1B, Steve Kinser,
Hugoton, KS

RESERVE GRAND CHAMPION

High % Female

MNP Blue Affluent, Connie Brooks,
Fair Grove, MO

Purebred/Fullblood Female –

February 1, 2014 & After

1. DeShazo's Bobbie Lou,
Shirley Deshazo, Bokoshe, OK
2. EGKK Annies Best, Kehrli Kattle,
Elmcrest Genetics, Manchester, IA

Purebred/Fullblood Female –

October 1, 2013 – January 31, 2014

1. BGB Cherry Bomb, Lane Hull,
Ardmore, OK
2. SRD Black Queen ET,
Steve Dollarhide, Haworth, OK
3. Jones' Alvira ET, Stanley Jones,
Nacogdoches, TX
4. Jones' Bailey ET, Stanley Jones,
Nacogdoches, TX



2014 National Show Results



5. ADAGIRL, Kenneth Burgin,
Big Sandy, TX

CHAMPION

Purebred/Fullblood Calf

DeShazo's Bobbie Lou,
Shirley Deshazo, Bokoshe, OK

RESERVE CHAMPION

Purebred/Fullblood Calf

BGB Cherry Bomb, Lane Hull,
Ardmore, OK

Purebred/Fullblood Female – June 1 – September 30, 2013

1. BGB Dream On, Lane Hull
Ardmore, OK
2. BGB Kitty Kat, Lane Hull
Ardmore, OK
3. SRD Blue Abby, Steven Dollarhide,
Haworth, OK

Purebred/Fullblood Females - February 1 - May 31, 2013

1. Jones' Audrie ET, Stanley Jones,
Nacogdoches, TX
2. Jones' Aggie ET, Stanley Jones,
Nacogdoches, TX

Purebred/Fullblood Female – October 1, 2012 – January 31, 2013

1. Jones' Zsa Zsa ET, Stanley Jones,
Nacogdoches, TX

CHAMPION

Purebred/Fullblood Yearling Female

BGB Dream On, Lane Hull
Ardmore, OK

RESERVE CHAMPION

Purebred/Fullblood Yearling Female

BGB Kitty Kat, Lane Hull
Ardmore, OK

Purebred/Fullblood Females – October 1, 2011 - September

1. DeShazo's Lou Lou, Shirley Deshazo,
Bokoshe, OK

CHAMPION

Purebred/Fullblood Senior Female

DeShazo's Lou Lou, Shirley Deshazo,
Bokoshe, OK

GRAND CHAMPION

Purebred/Fullblood Female

DeShazo's Lou Lou, Shirley Deshazo,
Bokoshe, OK

RESERVE GRAND CHAMPION

Purebred/Fullblood Female

DeShazo's Bobbie Lou,
Shirley Deshazo, Bokoshe, OK

BULLS

Halfblood Bulls

June 1 – September 20, 2013

1. WCM Asher, R. Wayne Matlock
Bixby, OK

CHAMPION

Halfblood Yearling Bull

WCM Asher, R. Wayne Matlock
Bixby, OK

GRAND CHAMPION

Halfblood Yearling Bull

WCM Asher, R. Wayne Matlock
Bixby, OK

Percentage Bulls –

February 1, 2014 and after

1. SKSL Jessie's Rock, Steve Kinser
Hugoton, KS



2014 National Show Results



Percentage Bulls -

October 1, 2013 - January 31, 2014

1. EGKK Swagger Alert, Kehrli Kattle
Elmcrest Genetics, Manchester, IA
2. WCM Achille, R. Wayne Matlock
Bixby, OK

CHAMPION

Percentage Bull Calf

EGKK Swagger Alert, Kehrli Kattle
Elmcrest Genetics, Manchester, IA

RESERVE CHAMPION

Percentage Bull Calf

SKSL Jessie's Rock, Steve Kinser
Hugoton, KS

Percentage Bulls -

June 1 - September 30, 2013

1. BGB Black Knight, Lane Hull
Ardmore, OK
2. BGB Black Rain, Lane Hull
Ardmore, OK

CHAMPION

Percentage Yearling Bull

BGB Black Knight, Lane Hull
Ardmore, OK

RESERVE CHAMPION

Percentage Yearling Bull

BGB Black Rain, Lane Hull
Ardmore, OK

GRAND CHAMPION

Percentage Bull

EGKK Swagger Alert, Kehrli Kattle
Elmcrest Genetics, Manchester, IA

RESERVE GRAND CHAMPION

Percentage Bull

SKSL Jessie's Rock, Steve Kinser
Hugoton, KS

Purebred/Fullblood Bulls -

February 1, 2014 & After

1. SRD Heavy Weight,
Steven Dollarhide, Haworth, OK
2. DeShazo's Brutus, Shirley DeShazo
Bokoshe, OK

Purebred/Fullblood Bulls -

October 1, 2013 - January 31, 2014

1. Jones' Atticus ET, Stanley Jones
Nacogdoches, TX
2. Goss' Beau, Stanley Jones
Nacogdoches, TX

CHAMPION

Purebred/Fullblood Bull Calf

SRD Heavy Weight,
Steven Dollarhide, Haworth, OK

RESERVE CHAMPION

Purebred/Fullblood Bull Calf

Jones' Atticus ET, Stanley Jones
Nacogdoches, TX

Purebred/Fullblood Bulls -

June 1 - September 30, 2013

1. MNP Blue Axel, Connie Brooks
Fair Grove, MO
2. SRD Shank, Steven Dollarhide
Haworth, OK
3. MNP Blue American Diesel,
Connie Brooks, Fair Grove, MO

Purebred/Fullblood Bulls -

February 1 - May 31, 2013

1. EGKK Skipper Swagger,
Kehrli Kattle, Elmcrests Genetics,
Manchester, IA

Purebred/Fullblood Bulls -

Oct. 1, 2012 - January 31

1. SRD Alex's Dagger ET,
Steven Dollarhide, Haworth, OK
2. SRD Rock Star, Steven Dollarhide
Haworth, OK



2014 National Show Results



CHAMPION

Purebred/Fullblood Yearling Bull

EGKK Skipper Swagger, Kehrli Kattle,
Elmcrest Genetics, Manchester, IA

3. Goss' Beau, Stanley Jones,
Nacogdoches, TX

4. BGB Black Rain, Lane Hull
Ardmore, OK

RESERVE CHAMPION

Purebred/Fullblood Yearling Bull

SRD Alex's Dagger ET,
Steven Dollarhide, Haworth, OK

Get - Of - Sire

1. Captain De Somme,
Steve Dollarhide, Haworth, OK

2. EGKK Skipper Swagger, Kehrli
Kattle, Elmcrest Genetics,
Manchester, IA

3. Jones' Atticus, Stanley Jones,
Nacogdoches, TX

Purebred/Fullblood Bulls -

Oct. 1, 2010 - September 2011

1. SRD Black Diamond,
Lane Hull, Ardmore, OK

GRAND CHAMPION

Purebred/Fullblood Bull

EGKK Skipper Swagger, Kehrli Kattle,
Elmcrest Genetics, Manchester, IA

Produce of Dam

1. EGKK Skipper Swagger, Kehrli
Kattle, Elmcrest Genetics,
Manchester, IA

2. DeShazo's Brutus, Shirley DeShazo,
Bokoshe, OK

3. Jones' Alvira ET, Stanley Jones,
Nacogdoches, TX

4. Jones' Atticus, Stanley Jones,
Nacogdoches, TX

RESERVE GRAND CHAMPION

Purebred/Fullblood Bull

SRD Alex's Dagger ET,
Steven Dollarhide, Haworth, OK

Best Pair of Females

1. BGB Kitty Kat, Lane Hull,
Ardmore, OK
2. SRD Blue Abby, Steven Dollarhide
Haworth, OK
3. Jones' Audrie ET, Stanley Jones
Nacogdoches, TX
4. Jones' Bailey ET, Stanley Jones,
Nacogdoches
5. EGKK Annies Best, Kehrli Kattle,
Elmcrest Genetics, Manchester, IA
6. BGB Meg Monkey, Megan Elder,
Miami, OK

Best of 5 Head

1. SRD Alex's Dagger ET
Steven Dollarhide, Haworth, OK
2. EGKK Skipper Swagger,
Kehrli Kattle, Elmcrest Genetic,
Manchester, IA
3. Jones' Annie, Stanley Jones
Nacogdoches, TX
4. BGB Kitty Kat, Lane Hull,
Ardmore, OK

Best Pair of Bulls

1. EGKK Skipper Swagger, Kehrli
Kattle, Elmcrest Genetics,
Manchester, IA
2. SRD Alex's Dagger ET
Steven Dollarhide, Haworth, OK



2014 National Show Results



GRAND CHAMPION
Purebred/Fullblood Female
& CHAMPION
Purebred/Fullblood Sr. Female
DeShazo's Lou Lou
Shirley Deshazo



GRAND CHAMPION
Purebred/Fullblood Bull
& CHAMPION
Purebred/Fullblood Yearling Bull
EGKK Skipper Swagger
Kehrli Kattle & Elmcrest Genetics



CHAMPION
Purebred/Fullblood Bull Calf
SRD Heavy Weight
Steve Dollarhide



GRAND CHAMPION & CHAMPION
Percentage Bull Calf
EGKK Swagger Alert
Kehrli Kattle & Elmcrest Genetics



RESERVE GRAND CHAMPION
& RESERVE CHAMPION
Purebred/Fullblood Yearling Bull
SRD Alex's Dagger
Steve Dollarhide



RESERVE GRAND CHAMPION &
RESERVE CHAMPION
Percentage Bull Calf
SKSL Jessie's Rock
Steve Kinser

2014 National Show Results



GRAND CHAMPION
Percentage Female &
CHAMPION
Percentage Female Calf
SKSL Crystal Cora 1B
Steve Kinser



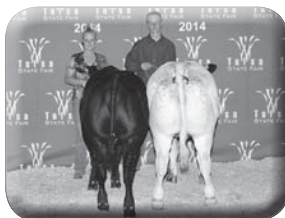
CHAMPION
Percentage Yearling Bull
BGB Black Knight
Lane Hull



GRAND CHAMPION
Halfblood Female
& CHAMPION
Halfblood Yearling Female
BGB Hot To Trot
Lane Hull

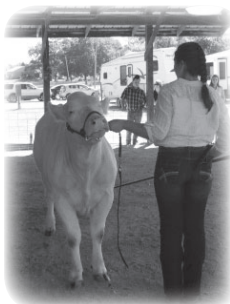


CHAMPION
Purebred/Fullblood
Yearling Female
BGB Dream On
Lane Hull



BEST PR. OF FEMALES
BGB Kitty Kat
Lane Hull

Scenes from 2014 National Show



2015 Tulsa National American Blue Show

- * Arrival: May begin arrival Wednesday September 30, 2015
- * Must be in place by Friday, October 2, 2015 by 12:00 noon
- * Show: Saturday, October 3, 2015 beginning at 10:00 a.m .
- * Location: OK Ford Dealers Arena 1
- * Release: There will be a staged release Sunday, October 4
All cattle must be out by 10:00 p.m.

Membership Meeting:

The American Blue Cattle Annual Membership Meeting will be held on October 3, 2015 at 2:00 p.m. on the fairgrounds. All members are welcome to attend.

Banquet and Auction:

The Annual Banquet and auction will be held on October 3, 2015 at 7:00 p.m. at the Courtyard Marriott Tulsa Central located at 3340 S. 79th East Ave., Tulsa, OK 74145. This year our banquet will be catered by the hotel.

Hotel Rooms:

A block of rooms have also been reserved at the Courtyard Marriott Tulsa Central. The room rate is \$79.00 per night plus tax. When you reserve your room please mention that you are with the American Blue Cattle Association in order to get this special rate. Rooms will be held until September 5th after this date the special rate no longer applies and rooms will be first come first serve. When calling to make reservations , please ***call 918-660-0646-press zero, this will connect you with the front desk staff.



Elmcrest Genetics

E
K



PALMER

15 years old and the final piece to the puzzle of Americanized Blue Cattle.

Our goals at Elmcrest Genetics and Kehrli Kattle are:

- 1) Raise and share Americanized Blue genetics with our customers.
- 2) Produce more saleable meat on every carcass to help feed our ever growing population
- 3) Produce more profit for our customers who are raising this beef.
- 4) Raise a product that is tender, tasty, lean and healthy for you.

Give us a call at (563) 920-8494...we love to talk about the Blues!



RIDGEDE

6 generations o

Born naturally from t
English Blue bro



SWAGGER 1

Champion Blue Bull 2013 Iowa State Fair

Elmcrest Genetics

Wilbur Kehrli

(563) 920-8494



REGAL I

Daughter of Ri
7th generationo

www.elmcrest

G
&
K

Kehrli Kattle



EDGEGEAN JESSIE

of natural calving!
the herd of the premier
breeder in England.



LADY ET

Edgedean Jessie.
of natural calving!

tgenetics.com

**FULL BLOOD BULLS & HEIFERS
SEMEN & EMBRYOS
AVAILABLE!**

Our Mission Statement

*To serve our customers and the American
Blue Family more effectively than anyone
else by treating our customers, fellow
breeders and consumers as we personally
would like to be treated.*



SWAGGER 2

The American Blue Cattle premier bull 2013

Kehrli Kattle
Kyle Kehrli
(319) 521-7135

Powered by



ConferTel
Clear Value. Clear Conferencing



Toll-Free Audio Conferencing

**Features You Need
Quality You Expect
Service You Deserve**

Dear Members,

We are pleased to announce we have partnered with ConferTel, a leading conferencing service provider. If you are you are looking for easy to use, low-cost phone conferencing provider, ConferTel's 24/7, on-demand and reservationless ExpressAttendee provides just the solution.

Some of the features include:

- Online account management
- Visual attendance monitoring
- Optional billing codes and custom greetings
- Record, replay and transcription

This service, already used by thousands of businesses worldwide, will help you manage calls with professionalism.

Ready to start? Follow this link to begin using a reliable, easy-to-use, multimedia conferencing solution anytime, anywhere.

Regards,
American Blue Cattle Association
936-652-2550
www.americanbluecattle.org

American Blue Beef ***Healthy & Flavorful***

The final judgment as to the success of a beef breed lies in the hands of you, the consumer. Today's beef consumer is more health conscious than ever before and is increasingly educated about the food and beef industry. American Blue Beef purebred meats have been repeatedly shown to contain less fat, less calories, and less cholesterol than skinless baked chicken breast, while still maintaining all the high nutritional elements for which beef is renowned.

The same genetic trait that results in a healthy meat item also creates a tender, moist, flavorful product as well. A cross-section of American Blue meat will contain more and shorter muscle fibers than traditional beef. This sig-

nificantly contributes to meat tenderness. Since there is minimal fat content, American Blue beef has greater moisture content. These two items together help establish a base for an exceptionally flavorful product.

Beef up your herd with American Blue Cattle the terminal sire of choice for commercial and dairy herds. Blue Cattle are bred for high yield lean meat with less fat and cholesterol than chicken. Their docile temperament makes them an excellent choice for club calves.



American Blue Cattle Application For Membership

American Blue Cattle

Pam Lee

P.O. Box 633404

Nacogdoches, TX 75963

Telephone 936.652.2550

Fax 936-569-6641

info@americanbluecattle.org

Applicant Name: _____

Ranch Name: _____

Address: _____

City: _____

State: _____

Zip: _____

Residence Phone: _____

Business Phone: _____

Fax: _____

Email: _____

Web Site: _____

Signature Of Applicant: _____

Membership Choices

Please Choose One + RANCH REGISTRATION if you would like to register cattle

_____	Lifetime Membership	\$2,500.00	(No Annual Fees)
_____	Active Membership	\$60.00	(Owner of Cattle - Voting Privileges)
_____	Junior Membership	\$35.00	(Must Be Under 21)
	Birth date Required for Junior Membership		
_____	Ranch Registration	\$25.00	(One Time Fee – for members wishing to register cattle)
	Include 3 Choices for Ranch Prefix (3-4 letters)		
		<input type="text"/>	<input type="text"/>

Remittance of \$ _____ is enclosed for Membership fee and/or Ranch Registration.

(** New members, please remember to include the **Ranch Registration** fee if you wish to register cattle.)

Return Completed Form and Payment to:

American Blue Cattle

Pam Lee

P.O. Box 633404

Nacogdoches, TX 75963

Application will not be processed until full payment is received.

New Members

The ABCA would like to recognize and welcome our new 2015 members.

Kenneth Edwards McRae, AR	Christine Sutton Jerico Springs, MO
Charlie Names (Junior) Sheridan, AR	Dexten Retchloff (Junior) Fordland, MO
Anna Drendel(Junior) Genoa, IL	James & Elizabeth Allgood Blanchard, OK
Erin Patterson (Junior) Gilman, IA	Tanner Stewart (Junior) Ardmore, OK
Abby Schieltz (Junior) Holy Cross, IA	John Fisher Chambersburg, Pa
Thomas Gerard Schieltz & Family Holy Cross, IA	Andy Bennett Paradise, TX
Roger & Cindy Taake & Family Elkader, IA	Brandy Duncan (Junior) Paradise, TX
Jason Anderson Arundel, ME	Brittany Duncan (Junior) Paradise, TX
Geralyn Kane Cheboygan, MI	JW or Donna McKibben Paradise, TX
Todd Vaughn & Michael McKnight Montpelier, MS	Erik Fleenor Chuckey, TN
	William Bricker Vershire, VT 05079

Membership Benefits

As a member of the American Blue Cattle organization, the following are some of the many services and programs we offer members.

- Complete Registry
- Youth Program
- Scholarship Program
- State Affiliates
- Listing in the Membership Directory
- Internet Advertisement in the Membership Directory
- Link your site to ABCA
- Listing on the ABCA Website Members Directory
- Free Newsletter and Classified Ads
- Breeder Referrals
- Parent Verification & DNA Testing
- Internet Updates
- Advertising on the Internet
- International Recognition and

ABCA is a member of the American Blue International (BBI) Association



2015 Officers

HAROLD BRUBAKER PRESIDENT

215 Back Creek Church Road
Asheboro, NC 27205

Home: 336-629-4202

Office: 336-629-5128

Fax: 336-629-2603

email: hjbrubaker@yahoo.com

www.bluefarm.net

STEVE DOLLARHIDE VICE PRESIDENT

400 Onyx Hill Rd.

Haworth, OK 74740

Phone: 580-245-2370

email: steve@sramERICANbluecattle.com

www.sramERICANbluecattle.com

STEVE KINSER TREASURER

986 Rd. 16

Hugoton, KS 67951

Home: 620-544-4490

Office: 620-544-4490

Fax: 620-544-4490

Email: kinsersteve@yahoo.com

STEVE KEESEE SECRETARY

257 Grant St.

Prattsville, AR 72129

Home: 870-699-4606

Email: kzcountry@hotmail.com

Executive Director

PAM LEE

P.O. Box 633404

Nacogdoches, TX 75963

936-652-2550

Email: belgianblueinfo@yahoo.com

www.amERICANbluecattle.org

Board Members

CONNIE BROOKS

4773 E. Farm Rd 48

Fair Grove, MO 65648

Home: 417-759-7916

Cell: 417-840-5464

Fax: 417-759-7199

email: info@mnpfarm.com

www.mnpfarm.com

CINDY BERNER-SCHLICHTE

25002 K42

Merrill, IA 51038

Cell: 712-540-2639

Fax: 712-938-2449

email: bs.cindy@gmail.com

KEN BURGIN

381 Pine Rd.

Big Sandy, TX 75755

Home: 903-636-9124

Email: ken@kdwoodwork.com

KYLE KEHRLI

2721 Stewart Ave.

Winthrop, IA 50682

Home: 319-934-3716

Kyle.kehrli@hotmail.com

www.elmcrestgenetics.com

SANDIE HULL

4073 Dickson Rd.

Ardmore, OK 73401-7825

Home: 580-223-6082

Membership Directory

ARKANSAS

Bear Creek Farms

Melvin Herring
1613 Roleson LN
Jonesboro, AR 72404
Cell: 870-830-1089

Edwards Belgian Blue Farm

Eddie & Lawanna Edwards
244 Webb Hill Road
McRae, AR 72102
ebbfarms@yahoo.com
Home: 501-882-5233

Edwards Blue Brangus Farm

Kenneth Edwards
307 Webb Hill Rd.
McRae, AR 72102
kenzroc@yahoo.com
Work: 501-940-4516

Keesee Farm

James Keesee
215 Peach Street
Pratsville, AR 72129
Home: 870-699-4498
Cell: 870-917-8894
kzcounty@hotmail.com
www.keeseefarms.com

Steve Keesee

257 Grant St.
Prattsville, AR 72129
skeesee@windstream.net
(home)
kzcounrty@hotmail.com
(Steve's)
Home: 870-699-4606

Payton Farms

Bill & Linda Payton
843 W. Vinity Rd.
McRae, AR 72102
Paytons farms@yahoo.com
Cell: 501-517-0884
Cell: 501-517-2621
Fax: 501-257-2026

SNC Farms

Charlie Names
(Junior)
1215 Little Cut Off Rd.
Sheridan, AR 72150
kdnames@windstream.net
Home: 870-942-7350
Work: 870-917-5429

SNC Farms

Kelly Names
1215 Little Cut Off Road
Sheridan, AR 72150
kdnames@windstream.net
Home: 870-942-7350
Work: 870-917-5429

SNC Farms

Stephen Names
1215 Little Cut Off Road
Sheridan, AR 72150
kdnames@windstream.net
Home: 870-942-7350

CALIFORNIA

Guilin Brothers

Livestock

Alex Guilin
1340 W. Hobsonway
Blythe, CA 92225
guilinbros@gmail.com
Work: 760-922-0216
Farm: 760-922-0609

COLORADO

Jerry and Pam Prostman

39625 Alta Vist Rd.
Ramah, CO 80832
fnbebl@yahoo.com
Cell: 719-510-5286

Paul Salazar

10959 Rd. 28
Ft. Lupton, CO 80621
psalazarstriping@yahoo.com
Home: 970-785-2671
Cell: 303-435-1413
Fax: 970-785-2671

FLORIDA

Tammy's Way

Tammy Bennett
4253 River Road
Hilliard, FL 32046
tammy.bennett@evansdelivery.com
Work: 904-632-2090
Cell: 904-219-6219

Russell Lee Johnson

17851 NW 149 Place
Alacuya, FL 32615
rjl452@yahoo.com
352-281-4946

Ruby Mills

750 Joe Pittman Rd.
Seville, FL 32190
Phone: 386-547-0918

GEORGIA

Triple K & J Farm

Keith & Linn White
1388 Highway 33 South
Moultrie, GA 31288
linnmiller@rocketmail.com
Phone: 229-873-6048

IDAHO

9K Ranch

Gene Lish
2277 Inkorn Rd.
Inkom, ID 83245
kidlish@q.com
Phone: 208-317-3356

INDIANA

Shaylee Brinks

(Junior)
2984 100 St.
Waucoma, IN 52171
Phone: 563-776-7051

Ellis Farms

Dr. Michael Ellis
Box 38
Holland, IN 47541
EllisFarm45@hotmail.com
Home: 812-536-5800
Office: 812-536-3011

Membership Directory

Stone Farms

Stephen Stone
3840 West Grandview Rd.
Salem, IN 47167
StoneClydes@aol.com
StoneFarmsLLC.com
812-896-2603

ILLINOIS

Anna Drendel (Junior)
32729 State Rt. 23
Genoa, IL 60135

Jim & Phil Reinhart &
Rick McCarty
9087 E. Lincoln Hwy. Rd.
Lerna, IL 62440
Phil@4econsolidated.net
Home: 217-235-5693

IOWA

Elmcrest Genetics

Wilbur Kehrli
1596 210th St.
Manchester, IA 52057
neatoldethings@hotmail.com
Home: 563-920-8494
Office: 563-927-2982

Honey Creek Cattle

Robert & Tanya Wickman
2051 155th St
Manchester, IA 52057
wickman935@yahoo.com
563-920-6891 H
563-920-6089 W

Adam Horman

P.O. Box 26
204 Lombard
Clarence, IA 52216
adamhorman@yahoo.com
Phone: 563-357-3336

Kehrli Homestead

Larry Kehrli
413 North Walnut
New Hampton, IA 50659
563-920-1294

Kehrli Kattle

Kyle Kehrli
2721 Stewart Ave.
Winthrop, IA 50682
kyle.kehrli@hotmail.com
www.kountrykens.net
Phone: 319-934-3716

Kountry Blues

Kenneth or G. Lynne
McManigle
107 N. Nelson
Stanley, IA 50671
kenscars@netins.net
Home: 319-634-3768
Office: 319-634-3788
Cell: 319-440-1313
Fax: 319-634-3798

Kuntz Brothers Farms

Sunnyside Livestock Farm
Arthur Kuntz
4082 170th St.
Brooklyn, IA 52211
aandlkuntz@netins.net
Home: 641-522-7179
Work: 641-990-1841

M & M Patterson Farms, Inc.

Erin Patterson (Junior)
14285 N. 115th Ave. E
Gilman, IA 50106
Home: 641-498-2224
Fax: 641-498-7704

M & M Patterson Farms, Inc.

Mark Patterson
14285 N. 115th Avenue E
Gilman, IA 50106
marpat@pcpartner.net
Home: 641-498-2224
Cell: 515-419-5129
Fax: 641-498-7704

Jacob Patterson

(Junior)
14285 N. 115th Avenue E
Gilman, IA 50106
pattejac8987@gmail.com

Phone: 641-891-3933

Pin Oak Blues

Abby Schieltz (Junior)
25325 Hwy 52 North
Holy Cross, IA 52053
tomschieltz@gmail.com
Home: 563-590-2229

Pin Oak Blues

Thomas Gerard Schieltz &
Family
25325 Hwy 52 North
Holy Cross, IA 52053
tomschieltz@gmail.com
Home: 563-590-2229

Schlichte Petty Cattle Co.

Cindy Schlichte
Ty and Kylie Petty
25002 K42
Merrill, IA 51038
bs.cindy@gmail.com
Cell: 712-540-2639 or
712-540-9109
Fax: 712-938-2449

Laisee Shakespeare

(Junior)
3354 305th St.
Hopkinton, IA 52237
319-480-4411

Stonewall-Johnson Farm

Laurie Stonewall
2114 L Avenue
Marengo, IA 52301
319-361-0147

Roger & Cindy Taake & Family

23997 250th St.
Elkader, IA 52043-8092
rctaake@alpinecom.net
Home: 563-245-1627

Mary Beth Todd

(Junior)
2308 170th Ave.
Manchester, IA 52057
563-920-8218

Membership Directory

Jenel Wenndt (Junior)
537 Taylor Avenue
Lowden, IA 52255
Home: 563-941-7678

KANSAS

Sand Kastle Ranch

Steve Kinser
986 Rd. 16
Hugoton, KS 67951
kinsersteve@yahoo.com
Home: 620-544-4490
Office: 620-544-4490
Fax: 620-544-4490

KENTUCKY

Call To Post Farms

John Reid, Jr.
186 Davids Dr.
Sherpherdsville, KY 40165
John@call-to-post-farms.com
Cell: 502-639-1994

Elgin Cartwright

245 Sandcut Rd.
Madisonville, KY 42431
270-821-4932

Mefford Family Farms

Bettie Mefford
546 Sulphur Lick Rd.
Frankfort, KY 40601
meffhogan@yahoo.com
Home: 502-227-4819
Office: 502-227-9855
Cell: 502-545-0574

Honorary Member

Roger & Donna Yoebstl

195 Rocky Hill School Rd.
Smiths Grove, KY 42171
dyoebstl@scrtc.com
Home: 270-749-3476
Cell: 270-535-1442

LOUISIANA

Myers Belgian Blues

Phil Myers
P.O. Box 294
Estherwood, LA 70534
Home: 337-785-0750

Goss Cattle Company

Sam & Joani Goss
19397 Raoul Rd.
Iona, LA 70647
samandjoani@yahoo.com
Home: 337-588-4460
Fax: 337-588-4226

Lazarus Farms

Gerald W. Jr. or Tonya J.
Lazarus
249 Hwy 1041
Pine Grove, LA 70453
lazarusfarms@yahoo.com
Cell: 225-268-0777

MAINE

Jason Anderson

64 Thompson Rd.
Arundel, ME 04046
Email: j_anderson_78@msn.com
Home: 207-985-1765

Homestead Farm

Joylie Gushee
277 Collinstown Rd.
Union, ME 04862
Work: 207-691-1541

MICHIGAN

Grice Pharms

Fred Grice
528 W. Garfield
Rothbury, MI 49452
fred.grice@hometown-pharmacy.com
Home: 231-861-5535
Office: 231-861-8138
Fax: 231-861-8138

Kane Korral

Geralyn Kane
P.O. Box 345
Cheboygan, MI 49721
kparent@freeway.net
Home: 231-625-0240
Work: 231-627-9949
Fax: 213-627-8294

Harold E. Shoemaker

6776 W. Blanchard Road
Blanchard, MI 49310
heshof41@yahoo.com
Phone: 989-561-5590
989-560-8900

MINNESOTA

Frosty Lane Farms

Lawrence Panek
17549 220th Ave. NE
Thief River Falls, MN 56701
ljpanek@gmail.com
Home: 218-681-5703
Cell: 218-689-0574

Holder Farms

Wendy Holder
5340 Meadowview Road
Brainard, MN 56401
jwhbrainard@hotmail.com
Phone: 218-839-8793

MISSISSIPPI

Todd Vaughn & Michael McKnight

18031 Hwy 46
Montpelier, MS 39754
Cell: 601-540-6397

MISSOURI

2/S Belgian Blues

Christine Sutton
4515 E 1550 Rd.
Jerico Springs, MO 64756
the.suttons04@yahoo.com
Home: 417-955-2696
Work: 928-713-5260

Jim & Dawn Boerding

5520 N. Hwy 94
Boerding Farm LLC
St. Charles, MO 63301
JDBoerding@msn.com
Home: 636-250-3248
Cell: 636-634-1779
Fax: 636-250-3248

Membership Directory

Amanda Field

4466 Bennett Rd.
Elk Creek, MO 65464
hbf.farms@gmail.com
Phone: 417-824-0978

Jim & Sharon Hunt

5354 S. 20th Rd.
Walnut Grove, MO 65770
jshblues@netscape.com
www.jshblues.com
Home: 417-694-8207
Cell: 417-399-2906

LLB Farm

David & Leslie Beckham
283 Cumberland Rd.
Elkland, MO 65644
Home: 417-759-7581
Cell: 417-844-5581

LLB Farm

Logan Beckham
283 Cumberland Rd.
Elkland, MO 65644
Home: 417-759-7581
Cell: 417-844-5581

MNP Farm

Connie & Richard Brooks
4773 E. Farm Rd. 48
Fair Grove, MO 65648
mnpfarm@aol.com
www.mnpfarm.com
Home: 417-759-7916
Cell: 417-840-5464
Fax: 417-759-7199

Dexten Retchloff (Junior)

33 New Hope Rd.
Fordland, MO 65652

Tarras Farms

Thomas Gruenes & Carrie
Wyrick
1055 NE Silt Lane
Spickard, MO 64679
tarrasfarm@gmail.com
Home: 660-673-6041
Work: 320-309-6968

MONTANA

Horned Cow Ranch

John Meschke
209 3rd Street H.P.
Glendive, MT 59330
Phone: 406-365-5437

NEBRASKA

Fillingham and Sons Farms, LLC

John and Doug Fillingham
30096 Fillingham Drive
Morrill, NE 69358
nebraskabelgianblue@yahoo.com
Phone: 308-247-2858

Studnicka, Inc.

Jerry & Sue Studnicka
37147 Navaho Rd.
Ravenna, NE 68869
studnicka@kdsi.net
Home: 308-745-0388
Cell: 308-440-0768

NEVADA

Lifetime Member
Belgian Blue Organics
Michelle Labrosse
502 N. Division St.
Carson City, NV 89703
rita.soto@cheetahlearning.com
Home: 775-230-0826

NEW YORK

Rolling Winds Farm

Nathan Wells
102 E. South St.
Groton, NY 13073
backpack74@yahoo.com
Phone: 607-351-0932

Emily Covert (Junior)

1848 Higgins Rd.
Warsaw, NY 14569

NORTH CAROLINA

Jonathan Brubaker

3271 Brubaker Lane
Asheboro, NC 27205
johnathanbrubaker@yahoo.com
Home 336-629-3957
Cell: 336-465-0702
Fax: 336-629-2603

Tudor Oak Farm

Harold Brubaker
215 Back Creek Church Rd.
Asheboro, NC 27205
hjbrubaker@yahoo.com
www.belgianbluefarm.com
Home: 336-629-4202
Office: 336-629-5128
Cell: 336-302-4663
Fax: 336-629-2603

OHIO

Bluescreek Farm Meats

David & Cheryl Smith
14141 Hill View Rd.
Marysville, OH 43040
bluescreekfarmsmeat@yahoo.com
Phone: 937-644-3344

Paradocs Farm

Jeff & Deb Williams
9957 SR5
Kinsman, OH 44428
pdf@onecom.com
Home: 330-876-3118
Office: 330-876-5555
Fax: 330-876-0103

OKLAHOMA

James & Elizabeth Allgood

P.O. Box 1911
Blanchard, OK 73010
johndeereman428@aol.com
Home: 405-823-4844

Membership Directory

B Squared Cattle Co.

James D. or Tamela D.
Berlin
398288 W. 1500 Rd.
Dewey, OK 74029
James.Berlin@att.net
Home: 918-534-3018

Lloyd and Kellie Capps

3301 E. 420 Road
Oologah, OK 74053
lloyd_capps@yahoo.com
Home: 918-371-1880

Cedar Creek Belgian Blue Farm

Ernest Garcia
9323 S.H. 54
Thomas, OK 73669
efgarcia59@yahoo.com
Home: 580-661-2267
Work: 580-695-2219
Fax: 580-661-2269

Bobby Clements

1636 Chickasaw Lake Rd.
Ardmore, OK 73401
bobbyclements1973@
yahoo.com
Phone: 580-222-4554

Nataley Clements

(Junior)
1636 Chickasaw Lake Rd.
Ardmore, OK 73401
bobbyclements1973@
yahoo.com
Phone: 580-222-4554

Deshazo's Farm

Shirley & Mike Deshazo
29370 Church House Rd.
Bokoshe, OK 74930
shirdesh@hughes.net
Home: 918-969-2608

Steve Dollarhide

400 Onyx Hill Rd.
Haworth, OK 74740
steve@sramERICANblue
cattle.com
www.sramERICANbluecattle.
com
Home: 580-245-2370
Cell: 870-648-6546
Fax: 580-286-3753

Rachel & Slade

Dollarhide (Juniors)
400 Onyx Hill Rd.
Haworth, OK 74740
Home: 580-245-2370

Lane Hull (Junior)

4073 Dickson Rd.
Ardmore, OK 73401
Home: 580-223-6082

Larry Don & Sandie Hull

4073 Dickson Rd.
Ardmore, OK 73401-7825
Home: 580-223-6082

JXJ Farm

Justin & Amanda Jenkins
30747 Prairie Bell Rd.
Keota, OK 74941
justinjenkins06@yahoo.
com
Home: 918-635-5003
Cell: 918-635-5003

J. Wayne & Tena Kennon

54301 E. 250th Rd.
Afton, OK 74331
Phone: 918-257-5178

David & Emilie A. Kraft

17220 N 97 E. Ave.
Collinsville, OK 74021
eclicity@mindspring.com
Home: 918-371-4723
Cell: 918-960-4723

Matlock Farms

Wayne & Cindi Matlock
7160 East 181st St. South
Bixby, OK 74008
mrfixit7160@aol.com
Phone: 918-366-4397
918-999-8335

Doug and Shelley Muse

7919 N. Hartford
Sperry, OK 74073
Doug.Muse@HP.com
Home: 918-425-4096
Work: 918-694-8879
Cell: 918-694-8879

Pampered Maiden Farm

Charles C., Jr. & Linda
Weddle
8151 E. Sorghum Mill Rd.
Edmond, OK 73034-9526
ccwJr46@aol.com
Home: 405-340-2618
Cell: 405-306-6531
Fax: 405-341-9372

Don Pippin

10680 N. 4020 Rd.
Wann, OK 74083
pippinfarms@yahoo.com
Home: 918-534-3967
Cell: 918-331-6373

Tanner Stewart (Junior)

1636 Chikasaw Lake Rd.
Ardmore, OK 73401
bobbyclements1973@
yahoo.com
Home: 580-222-4554

Ross & Carol Weller

P.O. Box 904
Skiatook, OK 74070
Home: 918-396-7612
Office: 918-596-7879
Cell: 918-230-7750
Fax: 918-699-3704

Membership Directory

Triple E Brahmousin
Justin Campbell (Junior)
 62800 E 140 Rd.
 Miami, OK 74354
 ok_boxers@sbcglobal.net
 Phone: 918-641-1544

Triple E Brahmousin
Amy Elder
 62800 E 140 Rd.
 Miami, OK 74354
 ok_boxers@sbcglobal.net
 Phone: 918-641-1544

Triple E Brahmousin
Megan Elder (Junior)
 62800 E 140 Rd.
 Miami, OK 74354
 ok_boxers@sbcglobal.net
 Phone: 918-641-1544

OREGON

Oak Hollow Belgian Blues
 Karen & Mark Kalsch
 10100 SW Robinson Rd.
 Hillsboro, OR 97123
 kalsch@msn.com
 Home: 503-628-1370
 Cell: 503-349-9053
 Fax: 503-628-1370

PENNSYLVANIA

Fisher Family Farm
 John Fisher
 5222 Fort McCord Rd.
 Chambersburg, Pa 17202
 jfisher@familycaseservices.org
 Home: 717-709-1615
 Work: 717-360-1936

Flowing Spring Farm
 Dennis & Denise
 Wolgemuth
 315 Pitney Rd.
 Lancaster, PA 17601
 wolge3@verizon.net
 Home: 717-392-2157
 Office: 717-629-3547
 Fax: 717-656-6011

TEXAS

Baudoin Farm
 Trent Baudoin
 200 Raintree CT
 Rockwall, TX 75189
 TazBaudoin@hotmail.com
 Home: 214-478-1241
 Work: 214-478-1241

Andy Bennett
 128 Private Rd. 3358
 Paradise, TX 76073
 dabwaseod@gmail.com
 Home: 817-403-0210

Clearview Hay and Cattle
 Ken Burgin
 381 Pine Road
 Big Sandy, TX 75755
 ken@kdwoodwork.com
 Home: 903-636-9124
 Work: 903-636-4086
 Fax: 903-636-9071

Brandy Duncan (Junior)
 421 County Road 3342
 Paradise, TX 76073
 jwmckibben@gmail.com
 Home: 940-389-7423

Brittany Duncan (Junior)
 421 County Road 3342
 Paradise, TX 76073
 jwmckibben@gmail.com
 Home: 940-389-7423

Jones Cattle Co.
 Stanley Jones
 P.O. Box 631123
 Nacogdoches, TX 75963
 jonesentltd@sbcglobal.net
 www.bellebrook.com
 Home: 936-564-5581
 Office: 936-564-7889
 Cell: 936-554-8075
 Fax: 936-569-6641

JW or Donna McKibben
 421 County Road 3342
 Paradise, TX 76073
 jwmckibben@gmail.com
 Home: 940-389-7423

Tall Tex Beef

David or Christine Meyer
 1023 Denrock
 Dalhart, TX 79022
 Talltex@xit.net
 Phone: 806-241GRASS
 806-333-5847

TENNESSEE

Erik Fleenor
 183 Painter Creek Rd.
 Chuckey, TN 37641
 Cell: 423-791-2904

VERMONT

Double Bow American Blues
 William Bricker
 8405 Route 113
 Vershire, VT 05079
 awtb.bricker@gmail.com
 Home: 802-685-0099

BELGIUM

Honorary Member
Herd Book Blanc-Bleu Belge
 Pierre Mallieu
 Rue Des Champs Elysees
 4
 5590 Ciney Belgium
 pmhbbb@skynet.be
 Office: 328-323-0612
 Fax: 328-321-6392

CANADA

La Gantoise
 Marie J. Goubau
 1489 Concession 1
 Lefavre, ON K0B 1J0
 Canada
 eurogene@hawk.igs.net
 Home: 613-679-4133
 Fax: 613-679-4061
 www.lagantoise.com

Annual Scholarship Program

To register for our annual scholarship program, download the application from the website: www.americanbluecattle.org and mail to:

American Blue Cattle
Association, Inc.
P.O. Box 633404
Nacogdoches, TX 75963

Criteria for the Scholarship Program

- Enrolled in a 2 or 4 year college
- Age 18-22
- ABCA Junior Member for a minimum of one year
- Must be a U.S. citizen
- May only receive the scholarship once
- Be a ABCA Junior Member in good standing
- Youth or family own American Blue Cattle

Registering an Animal

To register an animal go to www.americanbluecattle.org and print the form and send it to American Blue Cattle at:

American Blue Cattle Association, Inc.
Phone: 936-652-2550
P.O. Box 633404
Nacogdoches, TX 75963

Your registration application will be processed and a blood kit will be mailed as soon as full payment is received. Prices subject to error and change without notice.

Tattoo Letters

2016 Tattoo Letter is "D"
2015 Tattoo Letter is "C"
2014 Tattoo Letter is "B"
2013 Tattoo Letter is "A"
2012 Tattoo Letter is "Z"
2011 Tattoo Letter is "Y"
2010 Tattoo Letter is "X"

Pay your animal registration fees online: You can now pay your animal registration fees online using PayPal. Use the Registration in Word format - Open the document and type in the information on the application, save it and attach it to an email to info@belgianblue.org. Total your registration fees, click on the pay now button and you will be prompted to enter the donation amount on the PayPal page. We will match the emailed registration with your payment.

Animal Registration Fees

- * \$25.00 Registration of Fullbloods and Purebreds
- * \$40.00 DNA Kit
- * \$15.00 Registration of Percentage Grading-Up (50% To Purebred)
- * \$15.00 Certification of Percentage (Up To 50%)
- * \$15.00 Certification of Steers

Miscellaneous Fees

- * \$10.00 Duplicate Corrected / Additional Certificates
- * \$10.00 Animal Transfer of Ownership
- * \$10.00 Embryo Transfer of Ownership
- * \$10.00 Listing of Foreign Registered Animal in ABCA Herdbook
- * \$10.00 Entering Foreign Bloodtype or DNA Genotype at UC Davis
- * \$30.00 Rush charges for any paper work in addition to regular fees

ABCA American Blues Junior Awards

ABCA has developed an awards program for it's Junior exhibitors. The purpose of this program is to encourage development of our Junior cattlemen and women and to promote the American Blue breed.

To be eligible for the program the youth should not have reached his/her 21st birthday.

Awards will be given for the top Junior and the Reserve Junior. To be awarded the honor of top Junior, the young man or woman must be a Junior member of ABCA and accumulate points on the following scales. Open show sanctioned for youth points is: Tulsa State Fair - National Show. Cattle must be family or farm owned for at least 30 days prior to the show. Entry must be in juniors' name to qualify for class and overall points.

Showmanship points are only earned at sanctioned shows.

National Show Class Placings

- 30 points 1st Place
- 25 points 2nd Place
- 20 points 3rd Place
- 15 points 4th Place
- 10 points 5th Place

- Additional 30 points Overall American Blue Grand Champion
- Additional 20 points Overall American Blue Reserve Grand Champion

Showmanship

- 25 points 1st Place
- 20 points 2nd Place
- 15 points 3rd Place
- 10 points 4th Place
- 5 points 5th Place

All other shows, including **county fairs, state fairs, 4-H & FFA, Expos and Open Show Class Placings:**

- 20 points 1st Place
- 15 points 2nd Place
- 10 points 3rd Place
- 5 points 4th Place
- 3 points 5th Place
- Additional 20 points Overall Grand Champion
- Additional 10 points Overall Reserve Grand Champion

Rate of Gain

- 20 points 1st Place
- 15 points 2nd Place
- 10 points 3rd Place
- 5 points 4th Place
- 3 points 5th Place

Presentations

Any display or speech (at least 10 minutes in length) that promotes the Blue breed.

- 1-10 people 20 points
- 11-50 people 30 points
- 51+ people 40 points

Presentations must be verified in writing by person in charge of event such as FFA Advisor or 4-H Leader. Displays/presentations points can only be earned at one event at each fair.

Points are accumulated beginning in January and must be turned into the ABCA office by December 15.

Juniors may show any number of head at each show but points will only accumulate for four head.

Verification

To receive points the junior exhibitor must submit verification in the form of show results signed by the show superintendent or show results intended for public knowledge such as photos or articles in the media.

Send by December 15 to : American Blue Cattle Assoc., Pam Lee, P.O. Box 633404, Nacogdoches, TX 75963.

Junior Member Benefits

Cattle Registrations!



**Ken Schlichte
Memorial College
Scholarship!**

**Junior High Point
Champion & Reserve
Champion awarded
yearly**



**To Join The
American Blue
Cattle Association
PLEASE FILL OUT THE
MEMBERSHIP
APPLICATION**



**More information at
www.americanbluecattle.org**

Schlichte-Petty Cattle Co.

"Home of Champions"

Offering fullbloods, crossbreds, club calves,
semen and healthy meat.



Fullblood



Fullblood



3/4 Blood



3/4 Blood



3/4 Blood

Find us on Facebook for additional
pictures and information. Semen sales
are soaring for crossing to produce
fantastic club calves.

"The kind that catch a judge's eye."

Like us on Facebook

Schlichte-Petty Cattle Co.

Home of Champions

25014 K42 • Merrill, Iowa 51038

slickcattleco@gmail.com

bs.cindy@gmail.com

712-540-2639 • 712-540-9109





Fullblood



Fullblood



Percentage



Fullblood



Fullblood



Percentage



Fullblood



Fullblood



Fullblood



Fullblood

BGB

BLACK GOLD BELGIANS



Larry, Sandie & Lane Hull

(580) 223-6082

4073 Dickson Rd. • Ardmore, Oklahoma 73401

larrydhull1963@hotmail.com • sandiehull@yahoo.com

KOUNTRY BLUES

Home for percentages, transplants, and fullbloods with
the emphasis on natural birthing for showing and
a growing meat market



Ken & Lynne McManigle

107 N. Nelson • Stanley, IA 50671

Day Phone: 319-634-3788 • Evening Phone: 319-634-3768

Email: kenskars@netins.net • www.kountrykens.net

Why the American Blues?

- Extraordinary muscle development
- Great tenderness of the meat due to the thinness of the muscle fiber
- Extremely lean, tender and healthy beef
- Genetically tender beef without the fat cover and marbling
- Higher percentage of quality cuts
- More quality cuts in the forequarter
- Cattle have a docile temperament
- Short gestation length
- One of the highest yielding carcasses with dress out of 68%-72%
- Compliment to any crossbreeding program
- Great terminal sire breed

Benefits of Crossbreeding

Beef producers have been benefiting when using a Belgian Blue bull as a terminal cross sire. Belgian Blue crossbred calves result in increased carcass yield as compared to the dam. The Belgian Blue bull will put more weight and muscle on the calves' frames.

Butchers will also pay premium prices for both steers and heifers knowing there will be a high yield and more saleable.

Overall benefits of crossbreeding:

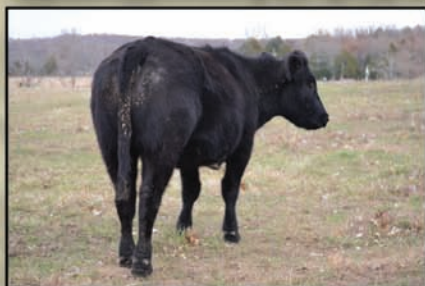
- High growth rates
- Early turnoff
- Outstanding feed conversion rates
- Outstanding dress percentages 60% +
- High yield
- Market preferred
- Butcher preferred
- Premium prices

MNP *Farm*

Richard & Connie Brooks
4773 E Farm Rd 48
Fair Grove, MO 65648
417.840.5464, cell
www.mnppfarm.com

Dedicated to Quality!

*Percentage, Purebred, Fullblood Cattle,
Semen, and Embryos Available.*



MNP Blue Axel • Grand Champion Bull • 2014 Arkansas State Fair

*Introducing Brooks' Performance Horses
standing 'Linas' Playin Jazzcat, High 'Brow
Cat' in your program*

Available for the 2016 Breeding Season!

Check out our website for more information!



Visit us online at
www.mnppfarm.com

Follow us on Facebook



Jones Cattle Company

Belle Brook Farms



Photos by Andrew D. Brosig/The Daily Sentinel

Belle Brook Farm owner Stanley Jones watches some of his Belgian Blue cross cattle as they pass by in the feed lot on the farm Wednesday in Nacogdoches. Jones began raising the Belgian Blue cattle more than 20 years ago because they produce a leaner, healthier meat. He crosses them with a mix that includes Charolais and Brahman for hardiness, keeping a minimum of 50 percent Belgian to insure the lean breeds through, he said.

SEMEN AVAILABLE • SPECIALIZING IN BLACK GENETICS

ALWAYS READY TO MEET YOUR NEEDS FOR ALL NATURAL AMERICAN BLUE BEEF

CALL FOR A FREE CATALOG 1-800-830-2354 AND VISIT OUR

WEBSITE WWW.BELLEBROOK.COM

BETTER FLAVOR • LESS FAT • MORE TENDER



P.O. Box 631123
Nacogdoches, TX 75963
Phone: 936-564-7889
Fax: 936-569-6641
Contact: Stanley Jones



TUDOR OAK FARMS

"The Nation's Leading American Blue Genetics"

OUR HERD IS 100% ELITE STATUS



TOF DAFYDD

**Congratulations to Larry & Sandie Hull, Ardmore, OK.
TOF DAFYDD has been added to their breeding herd.**

**He Combines the Best
Low Birth Weight
Genetics In the World!!!!**

- **Ingenieux du Stordeur**
 - **Hebreu**
 - **Highgrove**

**And Some of the
World's Best Genetics**

- **Opticien D'Ochain**
- **Dafydd D'Ochain**
- **Gribouille**

**Small Calves, Small Birth Weights!
Semen and Embryos Available**

Harold, Geraldine,
Jonathan, Megan, Grant, Justin & Vi Brubaker
215 Back Creek Church Road
Asheboro, NC 27205
Email: hjbrubaker@yahoo.com
Cell 336-302-4663

336-629-4202 • 336-629-2603 Fax
www.bluefarm.net

