

# AMERICAN BLUE CATTLE



**2014  
JOURNAL**

**[www.americanbluecattle.org](http://www.americanbluecattle.org)**

# American Blue Cattle



**FULLBLOOD • PUREBRED • PERCENTAGE  
BREEDING STOCK AVAILABLE**

*Quality  
Genetics*

**Steve Dollarhide**  
**400 Onyx Hill Rd**  
**Haworth, OK 74740**  
<http://www.sramERICANbluecattle.com/>  
[steve@sramERICANbluecattle.com](mailto:steve@sramERICANbluecattle.com)

*Specializing  
in  
Black*



# BGB

BLACK  
GOLD  
BELGIANS



**Larry, Sandie & Lane Hull**

(580) 223-6082

4073 Dickson Rd. • Ardmore, Oklahoma 73401

[larrydhull1963@hotmail.com](mailto:larrydhull1963@hotmail.com) • [sandiehull@yahoo.com](mailto:sandiehull@yahoo.com)

# Schlichte/Petty

## CATTLE CO.

***“Home of Champions”***

Offering fullbloods, crossbreds, semen and healthy meat.



Find us on Facebook for additional pictures and information.  
Semen sales are soaring for crossing to produce fantastic club calves.  
The kind that catch a judges eye.”

**Schlichte/Petty Cattle Co.**

Home of Champions.

25014 K42 • Merrill, Iowa 51038

slickcattleco@gmail.com • bs.cindy@gmail.com

712-540-2639

712-540-9109

### *Table of Contents*

Letter from the President....	3
Premier Breeder.....	4
Premier Cow.....	5
Premier Bull.....	5
2013 National Show,	
Tulsa.....	6-10
‘13 Tulsa Show Agenda..	11
Scenes from 2012 Tulsa.....	12-13
Benefits of Crossbreeding..	14
Why the Blues?.....	14
Blue Beef More Efficient	15
Application.....	27
Jr. Members Benefits.....	21
Scholarship Information.....	23
2012 Iowa State Fair.....	24-25
Meeting Consumer	
Demands.....	26
Membership Directory.....	28-34

### *Advertisers*

Black Gold Belgians.....	1
Elmcrest Genetics/Kehrli	
Kattle .....	18-19
ConferTel .....	3
Jones Cattle Co./Belle	
Brook Farms...Ins Bk Cov	
JSH Blues.....	35
Keesee Farms.....	36
Kountry Blues.....	20
MNP Farm.....	17
Schlichte/Petty Cattle Co..	2
SR American Blue Cattle....	
.....Ins. Frt. Cov.	
Tudor Oaks Farms.....	Bk
Cover	

### *On the Cover*

Featured on the cover on the left is MNP Blue Randa from MNP Farm, Fair Grove, Missouri, and owned by Connie and Richard Brooks.

The photo on the right, shows the dam SRD Black Rose and the calf is BGB Dream On. Both are from BGB, Ardmore, Oklahoma and owned by Larry and Sandie Hull.

Also, note the new logo on the front for the American Blue Cattle Association. This is the first issue under the name of American Blue Cattle Journal.





August 28, 2014

Dear Fellow Blue Breeder,

It seems every time I turn around it is fall and we prepare for our National Show and annual meeting for the American Blue Cattle Association.

As you may recall, last year at our annual meeting the membership was asked by Wilbur Kehrlri to change our name to the American Blue Cattle Association. The opinion of the members present was a "unanimous" decision to make the change.

Well since that time we have changed our website as we move forward to establish the American Blue as the premier breed that will improve your commercial herd.

Test results have continuously shown an America Blue crossed with any other breed will improve feed conversion and a higher percentage dressing weight.

As some would say it is the best kept secret in America. We have had new members join our organization and their interest for information continues to grow.

So, as we look forward to another year and push the Blues to the limelight let's do what an old friend of mine says, "Put a little Blue in everything you do."

Sincerely,

Harold Brubaker

Powered by



**ConferTel**  
ClearValue® Conferencing



## Toll-Free Audio Conferencing

**Features You Need  
Quality You Expect  
Service You Deserve**

Dear Members,

We are pleased to announce we have partnered with ConferTel, a leading conferencing service provider. If you are you are looking for easy to use, low-cost phone conferencing provider, ConferTel's 24/7, on-demand and reservationless **ExpressAttendant** provides just the solution.

Some of the features include:

- **Online account management**
- **Visual attendance monitoring**
- **Optional billing codes and custom greetings**
- **Record, replay and transcription**

This service, already used by thousands of businesses worldwide, will help you manage calls with professionalism.

Ready to start? [Follow this link to begin using a reliable, easy-to-use, multimedia conferencing solution anytime, anywhere.](#)

Regards,

American Blue Cattle Association

936-652-2550

[www.americanbluecattle.org](http://www.americanbluecattle.org)

## 2013 Premier Breeder - Elmcrest Genetics and Kehrli Kattle

It was great honor and surprise in Tulsa in September 2013, when Elmcrest Genetics and Kehrli Kattle won the Premier Breeder Award. Thinking back on the many years in the purebred industry we always had a love for cattle during the time that we were very active in the swine industry. We learned how you combine opportunity, a good product, youth, and hard work to make a breed better. We also learned to study the poultry and swine industries to see where the cattle industry is headed. We never believed that the swine industry would follow the poultry industry; sad to say, it followed the blueprint very closely.



**Wilbur Kehrli and great granddaughter,  
Kinnley Gallup**

At one time in the hog business we found that all of our customers had been told by their packers that they needed to begin using terminal cross boars on their sows to stay in line with new packing standards. I firmly believe that in the cattle industry we will see the same thing. The packer will instruct their producers to use a terminal cross sire, and this is where the American Blues will have a tremendous opportunity. In the beef industry right now roughly 5% of the bulls sold are what you would call terminal bulls. It's estimated that this need could jump to 30% of total bulls sold in a very short time window. What an opportunity in agriculture!

I first saw the Belgian Blue breed at the Iowa State Fair when they were having their national show. I always appreciated most of their traits. Over the years, we have found that structural soundness, whether it was in the swine industry or the beef industry was the number one criteria. In the year 2000, my son and grandson invited me to go to the National Belgian Blue sale when it was held in Walker, Iowa. I just went to look at the half-blood cattle, and happened to watch the full-blood sale. I saw a bull there that completely suited me as far as structure. He had big feet, his hind legs were where they should be, and he possessed an extended body with a long neck. Palmer wasn't very popular, but he was structurally sound, and heavily muscled enough to help us start our journey with the Blues. We brought him home, and used him on a combination of Simmental, shorthorn, and crossbred cows. Palmer's calves displayed their sire's structural correctness, and had the ability to out-perform their sire when it came to muscling. In addition to these qualities, we also expect Palmer's progeny to inherit their sire's gift of longevity. Palmer died two years ago at the ripe age of 15 and was still breeding cows as our main herd bull at the time.

Over the years while showing percentage cattle, we had the opportunity to meet many good people and made many friends in the Blue breed. One of these people was Bob Love from Minnesota, and in 2007 when he decided to retire, we had the opportunity to buy the nucleus of his herd. Bob had brought back embryos from England and several of these were out of Ridgedean Jessie, one of the great cows in England. We got two direct daughters out of Jessie, and they have done a great job building our Blue herd.

Palmer, our English bred bull, was the final piece to the puzzle of breeding Blues that are sound, fast growing, good tasting, and now eight generations of natural calving.

The members of the Blue organization are great and have been very helpful in aiding us in building our herd. Our advice to new members getting started in the breed, "Find the very best females out of a great core family and build from there. Don't wait until the opportunity train is leaving the station – be sure to be on it.

American Blue Cattle – unlimited opportunity, and a chance to help grow more beef for our ever-increasing customers. *Wilbur Kehrli, Elmcrest Genetics*



## 2013 Premier Cow - MNP Blue High Brow Gal

MNP Farm was awarded the Premier Female Award for 2013 with MNP Blue High Brow Gal.

Her sire is Daffy'd Ochain, and her dam is MNP Blue High Society. “ We were very honored to receive this award in 2010 and now in 2013 with a calf at her side. She is a product of a 25 year preceding program. Thank you to all involved .”



## 2013 Premier Bull - Swagger II

We were very honored to win the 2013 Premier Bull of the breed with Swagger II at the National Show in Tulsa last September. Both the dam and sire of Swagger II were raised on our farm, and as you can see from his pedigree, we have lined up the impressive English-born cow, Ridgedean Jessie, on both sides. Also in the pedigree you will see many good bulls including our English-bred bull, Palmer, who was the sire of Swagger II's mother. Ridgedean Jessie represents the 6th generation of natural calving in the Ridgedean herd, making Swagger II a representative of the 8th generation of natural calving within the Blues. Swagger II illustrates the soundness expressed by his grandsire Palmer that we are striving to consistently reach within the breed; he accomplishes this feat while also maintaining an adequate amount of muscling. The founding genetics of the Belgian Blue breed are great ones, but in order to meet our modern day beef needs they must be Americanized, and as the American Blue breed moves forward we feel Swagger II, and bulls like him, can be an important step in making the breed popular and accepted in today's beef industry. He has developed from an interesting calf champion at Tulsa into an impressive 18 month old bull that has gotten better every day of his life. This maturity pattern is a “must-have” factor on our farm when it comes to the retention of breeding stock. Thank you to the past breeders who have made these genetics available to us to produce this bull.



*Rules for Premier Breeder, Premier Bull and Premier Cow are listed on our website: [www.americanbluecattle.org](http://www.americanbluecattle.org)*

# 2013 National Show Results

## 2013 TULSA STATE FAIR SHOW RESULTS

October 8, 2013

Judge: Jarlath Duggan  
Ireland

### STEERS

*Prospect Low & Steer Halfblood or under 400-900 lbs*

1. SKSL Steer 2A, Steve Kinser, Hugoton, KS
2. SKSL Steer 30A, Steve Kinser, Hugoton, KS

### GRAND CHAMPION

*Prospect Low % Steer*

SKSL Steer 2A, Steve Kinser, Hugoton, KS

### RESERVE GRAND CHAMPION

*Prospect Low % Steer*

SKSL Steer 30A, Steve Kinser, Hugoton, KS

*Market Low % Steers ½ Blood or Under – Over 900 lb.*

1. SKSL Steer 4A, Steve Kinser, Hugoton, KS
2. SKSL Steer 33Z, Steve Kinser, Hugoton, KS

### GRAND CHAMPION

*Market Low % Steer*

SKSL Steer 4A, Steve Kinser, Hugoton, KS

### RESERVE GRAND CHAMPION

*Market Low % Steer*

SKSL Steer 33Z, Steve Kinser, Hugoton, KS

### FEMALES

*Halfblood Female –*

*October 1, 2012 – January 31, 2013*

1. EGKK Palmer Clubby 1,

- Wilbur Kehrli, Manchester, IA
2. EGKK Palmers Clubby 2, Wilber Kehrli, Manchester, IA

### CHAMPION

*Halfblood Calf*

EGKK Palmer Clubby 1, Wilbur Kehrli, Manchester, IA

### RESERVE CHAMPION

*Halfblood Calf*

EGKK Palmers Clubby 2, Wilbur Kehrli, Manchester, IA

*Halfblood Females –*

*June 1 – September 30, 2012*

1. WCM Zafira, Wayne R. Matlock, Bixby, OK

### CHAMPION

*Halfblood Yearling Female*

WCM Zafira, Wayne R. Matlock, Bixby, OK

### RESERVE CHAMPION

*Halfblood Yearling Female*

EGKK Palmers Clubby 2, Wilbur Kehrli, Manchester, IA

### GRAND CHAMPION

*Halfblood Female*

WCM Zafira, Wayne R. Matlock, Bixby, OK

### RESERVE GRAND CHAMPION

*Halfblood Female*

EGKK Palmers Clubby 2, Wilbur Kehrli, Manchester, IA

*High % Female -*

*October 1, 2012 – January 2013*

1. JSH Gigi, James Hunt, Walnut Grove, MO
2. JSH Sheba, James Hunt, Walnut Grove, MO
3. WCM Arkoma, Wayne R. Matlock, Bixby, OK



# 2013 National Show Results

## CHAMPION

### *High % Calf*

JSH Gigi,  
James Hunt, Walnut Grove, MO

## RESERVE CHAMPION

### *High % Calf*

JSH Sheba,  
James Hunt, Walnut Grove, MO

## GRAND CHAMPION

### *High % Female*

JSH Gigi,  
James Hunt, Walnut Grove, MO

## RESERVE GRAND CHAMPION

### *High % Female*

JSH Sheba,  
James Hunt, Walnut Grove, MO

### *Purebred/Fullblood Female – February 1, 2013 & After*

1. SRD Pretty Girl, Steve Dollarhide, Haworth, OK
2. Jones' Audrie ET, Stanley Jones, Nacogdoches, TX
3. Jones' Aggie ET, Stanley Jones, Nacogdoches, TX

### *Purebred/Fullblood Female – October 1, 2012 – January 31, 2013*

1. SRD Blue Fancy ET,  
Steve Dollarhide, Haworth, OK
2. SRD Black Ribbon ET,  
Steve Dollarhide, Haworth, OK
3. SRD Blue Pride,  
Steve Dollarhide, Haworth, OK
4. JSH Mookie, James Hunt,  
Walnut Grove, MO

## CHAMPION

### *Purebred/Fullblood Calf*

SRD Blue Fancy ET,  
Steve Dollarhide, Haworth, OK

## RESERVE CHAMPION

### *Purebred/Fullblood Calf*

SRD Pretty Girl,  
Steve Dollarhide, Haworth, OK

### *Purebred/Fullblood Female – June 1, 2012 – September 30, 2012*

1. Sieren's Zena ET, Lane Hull,  
Ardmore, OK
2. Timber Tops Zoe, Stanley Jones,  
Nacogdoches, TX

### *Purebred/Fullblood Female – October 1, 2011 – January 31, 2012*

1. DeShazo's Lou Lou, Shirley Deshazo,  
Bokoshe, OK
2. JSH Yvonne ET, James Hunt,  
Walnut Grove, MO
3. JSH Eclipse ET, James Hunt,  
Walnut Grove, MO

## CHAMPION

### *Purebred/Fullblood Yearling Female*

DeShazo's Lou Lou,  
Shirley Deshazo, Bokoshe, OK

## RESERVE CHAMPION

### *Purebred/Fullblood Yearling Female*

JSH Yvonne ET,  
James Hunt, Walnut Grove, MO

### *Purebred/Fullblood Females – Cow/Calf, Lactating calf*

1. MNP Blue High Brow Gal,  
Connie Brooks, Fair Grove, MO
2. MNP Blue Roxie,  
Connie Brooks, Fair Grove, MO
3. Skipper Sapphire ET,  
Wilbur Kehrli, Manchester, IA

## CHAMPION

### *Purebred/Fullblood Cow/Calf Pair*

MNP Blue High Brow Gal,  
Connie Brooks, Fair Grove, MO

# **2013 National Show Results**

## RESERVE CHAMPION

### *Purebred/Fullblood Cow/Calf Pair*

MNP Blue Roxie,  
Connie Brooks, Fair Grove, MO

1. BGB Rongo,  
Lane Hull, Ardmore, OK
2. SRD Black Duck,  
Steve Dollarhide, Haworth, OK

## GRAND CHAMPION

### *Purebred/Fullblood Female*

MNP Blue High Brow Gal,  
Connie Brooks, Fair Grove, MO

## CHAMPION

### *Percentage Bull Calf*

BGB Rongo,  
Lane Hull, Ardmore, OK

## RESERVE GRAND CHAMPION

### *Purebred/Fullblood Female*

SRD Blue Fancy ET,  
Steve Dollarhide, Haworth, OK

## RESERVE CHAMPION

### *Percentage Bull Calf*

SRD Black Duck,  
Steve Dollarhide, Haworth, OK

## BULLS

### *Halfblood Bulls*

#### *October 1, 2012 – January 31, 2013*

1. Doc's Gobblen,  
Charles Weddle, Edmond, OK
2. WCM Zeb,  
Wayne R. Matlock, Bixby, OK

## GRAND CHAMPION

### *Percentage Bull*

BGB Rongo,  
Lane Hull, Ardmore, OK

## CHAMPION

### *Halfblood Yearling Bull*

Doc's Gobblen,  
Charles Weddle, Edmond, OK

## RESERVE GRAND CHAMPION

### *Percentage Bull*

SRD Black Duck,  
Steve Dollarhide, Haworth, OK

## RESERVE CHAMPION

### *Halfblood Yearling Bull*

WCM Zeb,  
Wayne Matlock, Bixby, OK

### *Purebred/Fullblood Bulls – February 1, 2013 & After*

1. EGKK Skipper Swagger 2,  
Wilbur Kehrli, Manchester, IA
2. SRD Black Twister,  
Steve Dollarhide, Haworth, OK
3. Skipper Swagger III,  
Wilbur Kehrli, Manchester, IA
4. EGKK Skipper Swagger 1,  
Wilbur Kehrli, Manchester, IA

## GRAND CHAMPION

### *Halfblood Yearling Bull*

Doc's Gobblen,  
Charles Weddle, Edmond, OK

### *Purebred/Fullblood Bulls – October 1, 2012 – January 31, 2013*

1. SRD Black Blade,  
Steve Dollarhide, Haworth, OK
2. SRD Octane ET,  
Steve Dollarhide, Haworth, OK
3. SRD Rock Star,  
Steve Dollarhide, Haworth, OK
4. SRD Brute ET,  
Steve Dollarhide, Haworth, OK

## RESERVE GRAND CHAMPION

### *Halfblood Yearling Bull*

WCM Zeb,  
Wayne Matlock, Bixby, OK

### *Percentage Bulls –*

#### *June 1 – September 30, 2012*



# **2013 National Show Results**

5. Jones' Zippy ET,  
Stanley Jones, Nacogdoches, TX
6. Jones' Ace in the Hole,  
Stanley Jones, Nacogdoches, TX

## **CHAMPION**

### ***Purebred/Fullblood Bull Calf***

SRD Black Blade,  
Steve Dollarhide, Haworth, OK

## **RESERVE CHAMPION**

### ***Purebred/Fullblood Bull Calf***

EGKK Skipper Swagger 2,  
Wilbur Kehrli, Manchester, IA

### ***Purebred/Fullblood Bulls – June 1 – September 30, 2012***

1. BGB Jack of Diamonds,  
Lane Hull, Ardmore, OK

### ***Purebred/Fullblood Bulls – Oct. 1, 2010 – September 2011***

1. SRD Black Diamond,  
Lane Hull, Ardmore, OK

## **CHAMPION**

### ***Purebred/Fullblood Yearling Bull***

BGB Jack of Diamonds,  
Lane Hull, Ardmore, OK

## **RESERVE CHAMPION**

### ***Purebred/Fullblood Yearling Bull***

SRD Black Diamond, Lane Hull,  
Ardmore, OK

### ***Purebred/Fullblood Bulls – Oct. 1, 2010 – September 2011***

1. SRD Black Diamond,  
Lane Hull, Ardmore, OK **CHAMPION**

### ***Purebred/Fullblood Senior Bull-***

DeShazo's Tonka, Shirley Deshazo,  
Bokshe OK

## **GRAND CHAMPION**

### ***Purebred/Fullblood Bull***

SRD Black Blade,  
Steve Dollarhide, Haworth, OK

## **RESERVE GRAND CHAMPION**

### ***Purebred/Fullblood Bull***

EGKK Skipper Swagger 2,  
Wilbur Kehrli, Manchester, IA

### ***Best Pair of Females***

1. Jones' Audrie ET, Stanley Jones,  
Nacogdoches, TX;
2. JSH Gigi, James Hunt,  
Walnut Grove, MO;
3. JSH Eclipse ET,  
James Hunt, Walnut Grove, MO;
4. SRD Black Ribbon,  
Steve Dollarhide, Haworth, OK;
5. SRD Pretty Girl,  
Steve Dollarhide, Haworth, OK

### ***Best Pair of Bulls***

1. SRD Brute ET,  
Steve Dollarhide, Haworth, OK
2. BGB Jack of Diamonds,  
Lane Hull, Ardmore, OK;
3. SRD Rock Star,  
Steve Dollarhide, Haworth, OK

### ***Get - Of – Sire***

1. Captain De Somme,  
Steve Dollarhide, Haworth, OK

### ***Produce of Dam***

1. Jone's Audrie ET,  
C. Stanley Jones, Nacogdoches, TX
2. JSH Eclipse ET  
James Hunt, Walnut Grove, MO
3. SRD Blue Ribbon,  
Steve Dollarhide, Haworth, OK

### ***Best of 5 Head***

1. SRD Octane ET, Steve Dollarhide,  
Haworth, OK; 2. JSH Eclipse ET, James  
& Sharon Hunt, Walnut Grove, MO

# 2013 National Show Results



**GRAND CHAMPION**  
**Purebred/Fullblood Female**  
**& CHAMPION**  
**Purebred/Fullblood Cow/Calf Pair**  
**MNP Blue High Brow Gal**  
**Connie Brooks**



**GRAND CHAMPION**  
**Purebred/Fullblood Bull**  
**& CHAMPION**  
**Purebred/Fullblood Bull Calf**  
**SRD Black Blade**  
**Steve Dollarhide**



**RESERVE GRAND CHAMPION**  
**& RESERVE CHAMPION**  
**Purebred/Fullblood Female**  
**SRD Blue Fancy ET**  
**Steve Dollarhide**



**GRAND CHAMPION & CHAMPION**  
**Prospect Low % Steer**  
**SKSL Steer 2A**  
**Steve Kinser**



**GRAND CHAMPION & CHAMPION**  
**Market Low % Steer**  
**SKSL Steer 4A**  
**Steve Kinser**

## 2014 Tulsa National American Blue Show

- \* Fee: \$45 per head
- \* Entry Deadline: Aug. 25, 2014
- \* In Place By: Thurs. Sept. 25, at 12 noon
- \* May Arrive: Wed. Sept. 24 at 8 am
- \* Show: Friday Sept. 26, in Ford Dealers Arena
- \* Release: Will be a staged release Sept. 28.  
Must be out by 10 p.m.

Annual Meeting will be at 10:00 am on Saturday  
September 27th on the fair grounds.

**Banquet** will be on Saturday September 27th at 7:00pm  
in the Osage Meeting Room at the Courtyard Marriott  
Tulsa Central 3340 S. 79th E. Ave. Tulsa OK, 74145. It  
will be catered by the Rib Crib BBQ.

Entries must be submitted online at  
[www.tulsastatefair.com](http://www.tulsastatefair.com)

Rooms have been blocked at the following hotels in  
Tulsa: \* Arrival Sept. 24th, 2014  
\* Check out: Sept. 28th, 2014

**Courtyard Tulsa Central** 3340 S. 79th E Ave Tulsa,  
OK 74145 Phone: 918-660-0646 \$79.00 plus tax per  
night All non smoking double queen Rooms will be under  
American Blue Cattle Association \*Reservation deadline  
is Sept. 20, 2014 after this date all rooms not taken will  
be dropped.

**Baymont Inn & Suites** 4530 E. Skelly Dr. Tulsa, OK Phone:  
918-488-8777 \$69.00 plus tax per night All rooms non  
smoking 2 double beds Rooms will be under American Blue  
Cattle Association \*Reservation deadline is Sept. 20,  
2014 after this date all rooms not taken will be dropped.



## Scenes from 2013 National Show



## Scenes from 2013 National Show



## ***Why the American Blues?***

- Extraordinary muscle development
- Great tenderness of the meat due to the thinness of the muscle fiber
- Extremely lean, tender and healthy beef
- Genetically tender beef without the fat cover and marbling
- Higher percentage of quality cuts
- More quality cuts in the forequarter
- Cattle have a docile temperament
- Short gestation length
- One of the highest yielding carcasses with dressing out of 68%-72%
- Compliment to any crossbreeding program
- Great terminal sire breed

## ***Benefits of Crossbreeding***

Beef producers have been benefiting when using a Belgian Blue bull as a terminal cross sire. Belgian Blue crossbred calves result in increased carcass yield as compared to the dam. The Belgian Blue bull will put more weight and muscle on the calves' frames.

Butchers will also pay premium prices for both steers and heifers knowing there will be a high yield and more saleable.

### **Overall benefits of crossbreeding:**

- High growth rates
- Early turnoff
- Outstanding feed conversion rates
- Outstanding dressing percentages 60% +
- High yield
- Market preferred
- Butcher preferred
- Premium prices

## ***Blue Beef More Efficient***

By Steve Kinser

Treasurer, American Blue Cattle Assoc,

It seems very popular to be green these days. You see articles on how to live more green. Car and appliance retailers run ads boasting about being greener than their competitors. I even saw an ad that claimed to have the greenest eggs. They weren't talking color; they were all claiming to conserve natural resources. Whether it was fuel, electricity, or feed, they claimed to do more and go farther on less.

Then I thought "I have green beef". But that doesn't sound very appetizing so let's just call it blue beef. That is what I raise; blue beef or sometimes called belgian blue beef. And how can I say my cattle are more environmentally friendly or that they can produce more with less input? Well here goes, I have to admit there isn't a lot of hard research that has been done here in the USA. I have put a few of my blue cross bulls on feed trials. In the six years that they were in a pen with just blues, that pen had the highest feed efficiency on the bull test. For the 120 day test, my feed costs were \$70+ less than the average for the rest of the test which did include some bulls that could be as much as six months older. I also remember a good selling pen of bulls that averaged \$200 a head more to feed for the

120 days than mine. I developed a theory, since genetically my cattle produce a very limited amount of fat and fat has twice as many calories as protein, it has to take regular cattle more energy to put on all that extra fat on. So point number one, blues seem to have higher feed efficiency and use less natural resources.

Secondly, blues are noted for their hyper-muscular growth. This allows the blues to stack a lot of weight or meat on the rail. Where regular cattle put 55-65% of their live weight on the rail, blues can yield 68-75% on the rail. Then there is their percent trim or how much of their hanging weight is considered waste. In a USDA meat animal research center (marc) test done in the 1990's comparing Angus and blues, the Angus had 66 pounds more waste per half or side of beef. With the blues increased yield on the rail, this gave the blues 100 pounds more retail product per side. Recently, when two of my calves were processed at Yoder packing, I was told they yielded 75% and 77% of their carcass weight in retail product. Regular cattle typically are in the 40 – 55% range.

So, high feed efficiency, high yield and high cutability, that should equal green; well let's just say blue beef.





*Fullblood*



*Fullblood*



*Fullblood*



*Halfblood*



*Halfblood*



*Halfblood*



*Halfblood*



*Halfblood*



*Halfblood*



*Halfblood*



# MNP *Farm*

**Richard & Connie Brooks**

4773 E Farm Rd 48

Fair Grove, MO 65648

417.759.7916 • 417.840.5464, cell

[www.mnppfarm.com](http://www.mnppfarm.com)

## *Dedicated to Quality!*



### **National Grand Champion Female & Premier Cow-2013**

MNP Blue High Brow Gal & MNP Blue Annabella (calf)



### **National Reserve Cow/Calf Champions-2013**

MNP Blue Roxie & MNP Blue Ms. Attraction (calf)



MNP Blue Mr. Bixby

"A Huge Thank You" to Logan Beckham, Tylor Garcia, Kailyn Hollie,  
Steve Kinser for showing our cattle at the National Show!

*Introducing Brooks' Performance Horses  
standing "Lenas' Playin Jazcat"*



Visit us online at  
[www.mnppfarm.com](http://www.mnppfarm.com)

Follow us on Facebook





# Elmcrest Genetics

EC  
KR



## PALMER

15 years old and the final piece to the puzzle of Americanized Blue Cattle.

*Our goals at Elmcrest Genetics and Kehrli Kattle are:*

- 1) Raise and share Americanized Blue genetics with our customers.
- 2) Produce more saleable meat on every carcass to help feed our ever growing population
- 3) Produce more profit for our customers who are raising this beef.
- 4) Raise a product that is tender, tasty, lean and healthy for you.

*Give us a call at (563) 920-8494...we love to talk about the Blues!*



## RIDGEDEA

6 generations of m

Born naturally from the English Blue breed



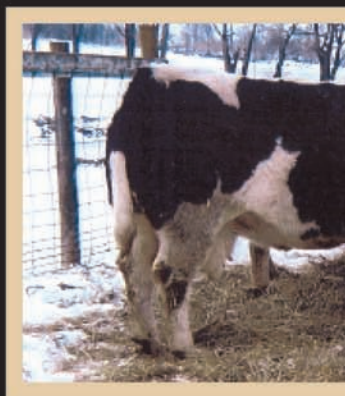
## SWAGGER 1

Champion Blue Bull 2013 Iowa State Fair

**Elmcrest Genetics**

*Wilbur Kehrli*

**(563) 920-8494**



## REGAL L

Daughter of Ridg

7th generation of n

**www.elmcrestg**



EG  
K

# Kehrli Kattle



## JEAN JESSIE

... of natural calving!  
... in the herd of the premier  
... breeder in England.



## LADY ET

... Ridgedean Jessie.  
... of natural calving!

estgenetics.com

**FULL BLOOD BULLS & HEIFERS  
SEMEN & EMBRYOS  
AVAILABLE!**

### *Our Mission Statement*

*To serve our customers and the American  
Blue Family more effectively than anyone  
else by treating our customers, fellow  
breeders and consumers as we personally  
would like to be treated.*



## SWAGGER 2

**The American Blue Cattle premier bull 2013**

**Kehrli Kattle**  
*Kyle Kehrli*  
**(319) 521-7135**



# KOUNTRY BLUES

Home for percentages, transplants, and fullbloods with  
the emphasis on natural birthing for showing and  
a growing meat market



**Ken & Lynne McManigle**

107 N. Nelson • Stanley, IA 50671

Day Phone: 319-634-3788 • Evening Phone: 319-634-3768

Email: [kenskars@netins.net](mailto:kenskars@netins.net) • [www.kountrykens.net](http://www.kountrykens.net)

## *Junior Member Benefits*

**Cattle Registrations!**



**Junior High Point  
Champion & Reserve  
Champion awarded yearly**



**Ken Schlichte  
Memorial College  
Scholarship!**



**To Join The  
American Blue  
Cattle Association  
PLEASE FILL OUT THE  
MEMBERSHIP  
APPLICATION**

**More information at  
[www.americanbluecattle.org](http://www.americanbluecattle.org)**



# ***ABCA American Blues Junior Awards***

ABCA has developed an awards program for it's Junior exhibitors.

The purpose of this program is to encourage development of our Junior cattlemen and women and to promote the American Blue breed.

To be eligible for the program the youth should not have reached his/her 21st birthday.

Awards will be given for the top Junior and the Reserve Junior. To be awarded the honor of top Junior, the young man or woman must be a Junior member of ABCA and accumulate points at sanctioned shows. Open shows sanctioned for youth points are: Tulsa State Fair - National Show, Iowa State Fair and Houston Livestock Show. Cattle must be family or farm owned for at least 30 days prior to the show. Entry must be in juniors' name to qualify for class and overall points.

Showmanship points are only earned at sanctioned shows.

## **National Show Class Placings**

- 30 points 1st Place
- 25 points 2nd Place
- 20 points 3rd Place

- 15 points 4th Place
- 10 points 5th Place
- Additional 30 points Overall American Blue Grand Champion
- Additional 20 points Overall American Blue Reserve Grand Champion

## **Showmanship**

- 25 points 1st Place
- 20 points 2nd Place
- 15 points 3rd Place
- 10 points 4th Place
- 5 points 5th Place

All other shows, including **county fairs, state fairs, 4-H & FFA, Expos and Open Show Class Placings:**

- 20 points 1st Place
- 15 points 2nd Place
- 10 points 3rd Place
- 5 points 4th Place
- 3 points 5th Place
- Additional 20 points Overall Grand Champion
- Additional 10 points Overall Reserve Grand Champion

## **Rate of Gain**

- 20 points 1st Place
- 15 points 2nd Place
- 10 points 3rd Place
- 5 points 4th Place
- 3 points 5th Place

## **Presentations**

Any display or speech (at least 10 minutes in length) that promotes the Belgian Blue breed.

- 1-10 people 20 points
- 11-50 people 30 points
- 51+ people 40 points

Presentations must be verified in writing by person in charge of event such as FFA Advisor or 4-H Leader. Displays/presentations points can only be earned at one event at each fair.

Points are accumulated beginning in January and must be turned into the ABCA office by December 15.

Juniors may show any number of head at each show but points will only accumulate for four head.

## **Verification**

To receive points the junior exhibitor must submit verification in the form of show results signed by the show superintendent or show results intended for public knowledge such as photos or articles in the media.

Send by December 15 to : American Blue Cattle Assoc., Pam Lee, P.O. Box 633404, Nacogdoches, TX 75963.

## ***Annual Scholarship Program***

To register for our annual scholarship program, download the application from the website: [www.americanbluecattle.org](http://www.americanbluecattle.org) and mail to:

American Blue Cattle  
Association, Inc.  
P.O. Box 633404  
Nacogdoches, TX 75963

### **Criteria for the Scholarship Program**

- Enrolled in a 2 or 4 year college
- Age 18-22
- ABCA Junior Member for a minimum of one year
- Must be a U.S. citizen
- May only receive the scholarship once
- Be a ABCA Junior Member in good standing
- Youth or family own American Blue Cattle

## ***Registering an Animal***

To register an animal go to [www.americanbluecattle.org](http://www.americanbluecattle.org) and print the form and send it to American Blue Cattle at:

American Blue Cattle Association, Inc.  
Phone: 936-652-2550  
P.O. Box 633404  
Nacogdoches, TX 75963

Your registration application will be processed and a DNA Form will be emailed as soon as full payment is received. Prices subject to error and change without notice.

### **Tattoo Letters**

2016 Tattoo Letter is "D"  
2015 Tattoo Letter is "C"  
2014 Tattoo Letter is "B"  
2013 Tattoo Letter is "A"  
2012 Tattoo Letter is "Z"  
2011 Tattoo Letter is "Y"  
2010 Tattoo Letter is "X"

Pay your animal registration fees online: You can now pay your animal registration fees online using PayPal. Use the Registration in Word format - Open the document and type in the information on the application, save it and attach it to an email to [info@belgianblue.org](mailto:info@belgianblue.org). Total your registration fees, click on the pay now button and you will be prompted to enter the donation amount on the PayPal page. We will match the emailed registration with your payment.

### **Animal Registration Fees**

- \* \$25.00 Registration of Fullbloods and Purebreds
- \* \$40.00 DNA Kit
- \* \$15.00 Registration of Percentage Grading-Up (50% To Purebred)
- \* \$15.00 Certification of Percentage (Up To 50%)
- \* \$15.00 Certification of Steers

### **Miscellaneous Fees**

- \* \$10.00 Duplicate Corrected / Additional Certificates
- \* \$10.00 Animal Transfer of Ownership
- \* \$10.00 Embryo Transfer of Ownership
- \* \$10.00 Listing of Foreign Registered Animal in ABCA Herdbook
- \* \$10.00 Entering Foreign Bloodtype or DNA Genotype at UC Davis
- \* \$30.00 Rush charges for any paper work in addition to regular fees





# 2013 Iowa State Fair Show



August 15, 2013  
Judge: Cindy Schlichte, Merrill, IA

## SHOWMANSHIP

1. Hope Lamphere
2. Zach Lamphere
3. Keelee Kehrli

## *Low % Sr. Heifer Calf – Sept. 1 – Dec. 31, 2013*

1. EGKK Palmer Clubby II,  
Elmcrest Genetics & Kehrli Kattle,  
Manchester, IA
2. EGGK Palmer Clubby I,  
Elmcrest Genetics & Kehrli Kattle,  
Manchester, IA

## CHAMPION

### *Low % Heifer Calf*

EGKK Palmer Clubby II  
Elmcrest Genetics & Kehrli Kattle,,  
Manchester, IA

## RESERVE CHAMPION

### *Low % Heifer Calf*

EGKK Palmer Clubby I  
Elmcrest Genetics & Kehrli Kattle  
Manchester, IA

## GRAND CHAMPION

### *Low % Heifer Calf*

EGKK Palmer Clubby II  
Elmcrest Genetics & Kehrli Kattle,,  
Manchester, IA

## RESERVE GRAND CHAMPION

### *Low % Heifer Calf*

EGKK Palmer Clubby I  
Elmcrest Genetics & Kehrli Kattle  
Manchester, IA

## *High % Sr Female-Aug. 31, 2011 or Before*

1. Ruby Red LKM3X, Kountry Blues,  
Stanley, IA

## CHAMPION

### *High % Sr. Female*

**American Belgian Blue - 24**

Ruby Red LKM3X, Kountry Blues,  
Stanley, IA

## GRAND CHAMPION

### *High % Sr. Female*

Ruby Red LKM3X, Kountry Blues,  
Stanley, IA

## *PB/FB Sr. Heifer Calf-Sept. 1 – Dec. 31, 2012*

1. Rose Ann LKM12z, Kountry Blues,  
Stanley, IA
2. Matilda ET LKM 14z, Kountry Blues,  
Stanley, IA

## CHAMPION

### *PB/FB Sr. Heifer Calf*

Rose Ann LKM12z, Kountry Blues,  
Stanley, IA

## RESERVE CHAMPION

### *PB/FB Sr. Heifer Calf*

Matilda ET LKM 14z, Kountry Blues,  
Stanley, IA

## *PB/FB Summer Yearling Heifer-May 1-Aug. 31, 2012*

1. Peppermint Patti LKM9Z, Kountry  
Blues, Stanley, IA

## PBFB COW/CALF

1. Palmers Princess, calf, Elmcrest  
Genetics & Kehrli Kattle, Manchester,  
IA

## CHAMPION

### *PB/FB Cow/Calf*

Palmers Princess, calf, Elmcrest  
Genetics & Kehrli Kattle, Manchester,  
IA

## GRAND CHAMPION

### *PB/FB Female*

Peppermint Patti LKM9Z, Kountry  
Blues, Stanley, IA

## RESERVE GRAND CHAMPION

### *PB/FB Female*

# 2013 Iowa State Fair Show

## **IOWA CHAMPION FEMALE**

Peppermint Patti LKM9Z, Kountry Blues, Stanley, IA

## **IOWA RESERVE CHAMPION FEMALE**

Palmers Princess, calf, Elmcrest Genetics & Kehrli Kattle, Manchester, IA

## ***PB/FB Jr. Bull Calf-Jan. 1, 2013 or After***

1. EG X 05-1, Elmcrest Genetics & Kehrli Kattle, Manchester, IA

2. EG X 05-1, Elmcrest Genetics & Kehrli Kattle, Manchester, IA

## **CHAMPION**

### ***PB/FB Jr. Bull Calf***

EG X 05-1, Elmcrest Genetics & Kehrli Kattle, Manchester, IA

## **RESERVE CHAMPION**

### ***PB/FB Bull Calf***

EG X 05-1, Elmcrest Genetics & Kehrli Kattle, Manchester, IA

## **GRAND CHAMPION**

## ***PB/FB Bull***

EG X 05-1, Elmcrest Genetics & Kehrli Kattle, Manchester, IA

## **RESERVE GRAND CHAMPION**

### ***PB/FB Bull***

EG X 05-1, Elmcrest Genetics & Kehrli Kattle, Manchester, IA

## **IOWA CHAMPION BULL**

EG X 05-1, Elmcrest Genetics & Kehrli Kattle, Manchester, IA

## **IOWA RESERVE CHAMPION BULL**

EG X 05-1, Elmcrest Genetics & Kehrli Kattle, Manchester, IA

## ***Pair of Bulls***

1. Elmcrest Genetics & Kehrli Kattle

## ***Pair of Females***

1. Kountry Blues, Stanley, IA

2. Kountry Blues, Stanley, IA

3. Elmcrest Genetics & Kehrli Kattle, Manchester, IA

## ***Best Five Head***

1. Elmcrest Genetics & Kehrli Kattle

## ***American Blue Beef*** ***Healthy & Flavorful***

The final judgment as to the success of a beef breed lies in the hands of you, the consumer. Today's beef consumer is more health conscious than ever before and is increasingly educated about the food and beef industry. American Blue Beef purebred meats have been repeatedly shown to contain less fat, less calories, and less cholesterol than skinless baked chicken breast, while still maintaining all the high nutritional elements for which beef is renowned.

The same genetic trait that results in a healthy meat item also creates a tender, moist, flavorful product as well. A cross-section of American Blue meat will contain more and shorter muscle fibers than traditional beef. This significantly contributes to meat tenderness. Since there is minimal fat content, American Blue beef has greater moisture content. These two items together help establish a base for an exceptionally flavorful product.

# *Meeting Consumer Demand*

By Steve Kinser

Treasurer, American Blue Cattle Assoc,

Consumer demand, what is it? It is that magical mythical ideal that every producer of a product hopes to fill. No matter the product I believe what the consumer wants most is choice. The dairy industry has done a good job providing the consumer with choices. When I was young we drank regular milk at school and at home. I didn't know there were other choices. Then fat became an issue and schools served 2% and now 1% milk. My daughter brought a paper home that made regular milk sound like poison. Still others like my father in law refers to low fat milk as watered down stuff and will not touch it. What did the dairy industry do. They made equal space on their shelves and priced and marketed it all as top quality products. This brings me to the question for the beef industry. Isn't it time we changed our marketing to attract more consumer demand.

We started out good 80 -90 years ago we saw consumers wanted a better guarantee that the meat they bought would be at least a certain quality. So our quality grading system was born. It had to be consistent easy to verify and seen with the naked eye because we had no electronics. The cattle coming to market was largely forage feed and could have a wide range of ages. So age could be easily checked by looking at the ossification of cartilage along the spine and ribs and of course the younger it is the more tender it is. The other easy

choice was fat accumulation. Fat would separate muscle fibers making it easier to chew and add some high energy fat that was missing in many diets back then. These two traits where not the two with the most influence just the ones that could be seen with naked eye. Today we know that on a given piece of meat, marbling accounts for 5-10 %of the tenderness. Back in 1998-1999 the USDA MARC (meat animal research center)stated that with proper genetics we could produce beef with 3% fat that was just as tender as 10% prime. Those carcass's would also yield 7% more edible lean beef. With today's market this leaner higher yielding product would fall in the subclass select bringing .10-.15\$ a pound less while yield more pounds retail product.

It seems that there is a portion of that consumer demand that the beef industry is ignoring. There is a large number of people on cardio or diabetic diets that are advised not to eat beef because of fat content. Another large section of people limit beef just to reduce calories. Look at any nutrition book and we see that a gram of protein and a gram of carbohydrate both yield about 4 kcal while a gram of fat yields 9 kcal. That's something people counting calories notice. They want the most for their calorie count. How many people are not eating beef due to lack of choice and are missing out on iron and nutrients that beef provide. We have had some discussion on changing beef labeling , I would say that the change that would make the most difference to consumers is tenderness rating and fat content.

American Blue Cattle Association  
Application for Membership



P.O. Box 633404  
Nacogdoches, TX 75963  
936.652.2550  
www.americanbluecattle.org

---

Applicant Name: \_\_\_\_\_

Ranch Name: \_\_\_\_\_

Address: \_\_\_\_\_

City: \_\_\_\_\_ State: \_\_\_\_\_ Zip: \_\_\_\_\_

Residence Phone: \_\_\_\_\_ Business Phone: \_\_\_\_\_ Fax: \_\_\_\_\_

Email: \_\_\_\_\_ Web Site: \_\_\_\_\_

Signature Of Applicant: \_\_\_\_\_

---

**Membership Choices**

Please Choose One + RANCH REGISTRATION if you would like to register cattle

_____	Lifetime Membership	\$2,500.00	(No Annual Fees)
_____	Active Membership	\$60.00	(Owner of Cattle - Voting Privileges)
_____	Junior Membership	\$35.00	(Must Be Under 21)
	Birth date Required for Junior Membership		
_____	Ranch Registration	\$25.00	(One Time Fee – for members wishing to register cattle)
	Include 3 Choices for Ranch Prefix (3-4 letters)		<input type="text"/> <input type="text"/> <input type="text"/>

---

Remittance of \$ \_\_\_\_\_ is enclosed for Membership fee and/or Ranch Registration.  
(\*\* New members, please remember to include the **Ranch Registration** fee if you wish to register cattle.)

---

Return Completed Form and Payment to:

**American Blue Cattle Association**

P.O. Box 633404  
Nacogdoches, TX 75963

*Application will not be processed until full payment is received.*



## ***New Members***

**The ABCA would like to  
recognize and welcome our new**

### **2014 members**

Ruby Mills,  
Seville, FL

Jacob Patterson (Jr.),  
Gilman, IA

Robert & Tanya Wickman  
Manchester, IA

Shaylee Brinks (Jr.),  
Waucoma, IN

Sam & Joani Goss,  
Iona, LA

Amanda Fields,  
Elk Creek, MO

Thomas Gruenes & Carrie Wyrick,  
Spickard, MO

Emily Covert (Jr.),  
Warsaw, NY

David & Cheryl Smith,  
Marysville, OH

Justin Campbell (Jr.),  
Miami, OK

Bobby Clements,  
Ardmore, OK

Nataley Clements, (Jr.),  
Ardmore, OK

Amy Elder,  
Miami, OK

Megan Elder (Jr.),  
Miami, OK

J. Wayne & Tena Kennon,  
Afton, OK

Brooke Logan George,  
Big Sandy, TX

## ***Membership Benefits***

As a member of the American Blue Cattle organization, the following are some of the many services and programs we offer members

- \* A complete registry
- \* All have DNA program available
- \* International recognition by Belgium
- \* Member of the Belgian Blue International (BBI) Association
- \* Promotional Booth and Materials
- \* A National Show
- \* A Youth Program
- \* A Student Scholarship
- \* Free Classified Ads!
- \* FREE Newsletter
- \* Friendships that last a lifetime!



## *2014 Officers*

### **HAROLD BRUBAKER PRESIDENT**

215 Back Creek Church Road  
Asheboro, NC 27205  
Home: 336-629-4202  
Office: 336-629-5128  
Fax: 336-629-2603  
email: [hjbrubaker@yahoo.com](mailto:hjbrubaker@yahoo.com)  
[www.belgianbluefarm.com](http://www.belgianbluefarm.com)

### **STEVE DOLLARHIDE VICE PRESIDENT**

400 Onyx Hill Rd.  
Haworth, OK 74740  
Phone: 580-245-2370  
email: [steve@sramERICANbluecattle.com](mailto:steve@sramERICANbluecattle.com)  
[www.sramERICANbluecattle.com](http://www.sramERICANbluecattle.com)

### **STEVE KINSER TREASURER**

986 Rd. 16  
Hugoton, KS 67951  
Home: 620-544-4490  
Office: 620-544-4490  
Fax: 620-544-4490  
Email: [kinsersteve@yahoo.com](mailto:kinsersteve@yahoo.com)

### **SHARON HUNT SECRETARY**

5354 S. 20th Rd.  
Walnut Grove, MO 65770  
Home: 417-694-8207  
Cell: 417-399-2906  
email: [jshblues@netscape.com](mailto:jshblues@netscape.com)  
[www.jshblues.com](http://www.jshblues.com)

## *Executive Director*

### **PAM LEE**

P.O. Box 633404  
Nacogdoches, TX 75963  
936-652-2550  
Email: [belgianblueinfo@yahoo.com](mailto:belgianblueinfo@yahoo.com)  
[www.belgianblue.org](http://www.belgianblue.org)

## *Board Members*

### **CONNIE BROOKS**

4773 E. Farm Rd 48  
Fair Grove, MO 65648  
Home: 417-759-7916  
Cell: 417-840-5464  
Fax: 417-759-7199  
email: [info@mnpfarm.com](mailto:info@mnpfarm.com)  
[www.mnpfarm.com](http://www.mnpfarm.com)

### **CINDY BERNER-SCHLICHTE**

25002 K42  
Merrill, IA 51038  
Cell: 712-540-2639  
Fax: 712-938-2449  
email: [bs.cindy@gmail.com](mailto:bs.cindy@gmail.com)

### **MARIE GOUBAU**

1489 Concession 1  
Lefavre, Canada ON K0B 1J0  
Home: 613-679-4133  
Fax: 613-679-4061  
Email: [eurogene@hawk.igs.net](mailto:eurogene@hawk.igs.net)  
[www.lagantoise.com](http://www.lagantoise.com)

### **ADAM HORMAN**

P.O. Box 26  
204 Lombard  
Clarence, IA 52216  
563-357-3336  
Email: [adamhorman@yahoo.com](mailto:adamhorman@yahoo.com)

### **KYLE KEHRLI**

2721 Stewart Ave.  
Winthrop, IA 50682  
319-934-3716  
[Kyle.kehrli@hotmail.com](mailto:Kyle.kehrli@hotmail.com)  
[www.elmcrestgenetics.com](http://www.elmcrestgenetics.com)

# *Membership Directory*

## **ARKANSAS**

### **Bear Creek Farms**

Melvin Herring  
1613 Roleson LN  
Jonesboro, AR 72404  
Cell: 870-830-1089

### **Edwards Belgian Blue Farm**

Eddie & Lawanna Edwards  
244 Webb Hill Road  
McRae, AR 72102  
ebbfarms@yahoo.com  
Home: 501-882-5233

### **Keesee Farm**

James Keesee  
215 Peach Street  
Pratsville, AR 72129  
Home: 870-699-4498  
Cell: 870-917-8894  
kzcounty@hotmail.com  
www.keeseefarms.com

### **Payton Farms**

Bill & Linda Payton  
843 W. Vinity Rd.  
McRae, AR 72102  
Paytonsfarms@yahoo.com  
Cell: 501-517-0884  
Cell: 501-517-2621  
Fax: 501-257-2026

### **Stephen Names**

1215 Little Cut Off Road  
Sheridan, AR 72150  
kdnames@windstream.net  
Home: 807-942-7350

### **Steve Keesee**

257 Grant St.  
Prattsville, AR 72129  
skeesee@windstream.net  
(home)  
kzcounrty@hotmail.com  
(Steve's)  
Home: 870-699-4606

## **CALIFORNIA**

### **Guilin Brothers**

**Livestock**  
Alex Guilin  
1340 W. Hobsonway  
Blythe, CA 92225  
guilinbros@gmail.com  
Work: 760-922-0216  
Farm: 760-922-0609

## **COLORADO**

### **Jerry and Pam Prostman**

39625 Alta Vist Rd.  
Ramah, CO 80832  
fnbebl@yahoo.com  
Cell: 719-510-5286

### **Paul Salazar**

10959 Rd. 28  
Ft. Lupton, CO 80621  
psalazarstriping@yahoo.com  
Home: 970-785-2671  
Cell: 303-435-1413  
Fax: 970-785-2671

## **FLORIDA**

### **Tammy's Way**

Tammy Bennett  
4253 River Road  
Hilliard, FL 32046  
tammy.bennett@evansdelivery.com  
Work: 904-632-2090  
Cell: 904-219-6219

### **Russell Lee Johnson**

17851 NW 149 Place  
Alacuya, FL 32615  
rjl452@yahoo.com  
352-281-4946

### **Ruby Mills**

750 Joe Pittman Rd.  
Seville, FL 32190  
Phone: 386-547-0918

## **GEORGIA**

### **Triple K & J Farm**

Keith & Linn White  
1388 Highway 33 South  
Moultrie, GA 31288  
linnmiller@rocketmail.com  
Phone: 229-873-6048

## **IDAHO**

### **9K Ranch**

Gene Lish  
2277 Inkom Rd.  
Inkom, ID 83245  
kidlish@q.com  
Phone: 208-317-3356

## **INDIANA**

### **Shaylee Brinks**

(Junior)  
2984 100 St.  
Waucoma, IN 52171  
Phone: 563-776-7051

### **Ellis Farms**

Dr. Michael Ellis  
Box 38  
Holland, IN 47541  
EllisFarm45@hotmail.com  
Home: 812-536-5800  
Office: 812-536-3011

### **Stone Farms**

Stephen Stone  
3840 West Grandview Rd.  
Salem, IN 47167  
StoneClydes@aol.com  
StoneFarmsLLC.com  
812-896-2603

## **IOWA**

### **Elmcrest Genetics**

Wilbur Kehrli  
1596 210th St.  
Manchester, IA 52057  
neatoldethings@hotmail.com  
Home: 563-920-8494  
Office: 563-927-2982

# Membership Directory

## **Honey Creek Cattle**

Robert & Tanya Wickman  
2051 155th St  
Manchester, IA 52057  
wickman935@yahoo.com  
563-920-6891 H  
563-920-6089 W

## **Adam Horman**

P.O. Box 26  
204 Lombard  
Clarence, IA 52216  
adamhorman@yahoo.com  
Phone: 563-357-3336

## **Kehrli Homestead**

Larry Kehrli  
413 North Walnut  
New Hampton, IA 50659  
563-920-1294

## **Kehrli Kattle**

Kyle Kehrli  
2721 Stewart Ave.  
Winthrop, IA 50682  
kyle.kehrli@hotmail.com  
www.kountrykens.net  
Phone: 319-934-3716

## **Kountry Blues**

Kenneth or G. Lynne  
McManigle  
107 N. Nelson  
Stanley, IA 50671  
kenscars@netins.net  
Home: 319-634-3768  
Office: 319-634-3788  
Cell: 319-440-1313  
Fax: 319-634-3798

## **M & M Patterson Farms, Inc.**

Mark Patterson  
14285 N. 115th Avenue E  
Gilman, IA 50106  
marpat@pcpartner.net  
Home: 641-498-2224  
Cell: 515-419-5129  
Fax: 641-498-7704

## **Jacob Patterson**

(Junior)  
14285 N. 115th Avenue E  
Gilman, IA 50106  
pattejac8987@gmail.com  
Phone: 641-891-3933

## **Schlichte Petty Cattle Co.**

Cindy Schlichte  
Ty and Kylie Petty  
25002 K42  
Merrill, IA 51038  
bs.cindy@gmail.com  
Cell: 712-540-2639 or  
712-540-9109  
Fax: 712-938-2449

## **Laisee Shakespeare**

(Junior)  
3354 305th St.  
Hopkinton, IA 52237  
319-480-4411

## **Stonewall-Johnson Farm**

Laurie Stonewall  
2114 L Avenue  
Marengo, IA 52301  
319-361-0147

## **Sunnyside Livestock Farm**

Arthur Kuntz  
4082 170th St.  
Brooklyn, IA 52211  
Home: 641-522-7179  
Cell: 641-990-1841

## **Mary Beth Todd**

(Junior)  
2308 170th Ave.  
Manchester, IA 52057  
563-920-8218

## **Jenel Wenndt**

(Junior)  
537 Taylor Avenue  
Lowden, IA 52255  
Home: 563-941-7678

## **KANSAS**

### **Sand Kastle Ranch**

Steve Kinser  
986 Rd. 16  
Hugoton, KS 67951  
kinsersteve@yahoo.com  
Home: 620-544-4490  
Office: 620-544-4490  
Fax: 620-544-4490

## **KENTUCKY**

### **Call To Post Farms**

John Reid, Jr.  
186 Davids Dr.  
Sherpherdsville, KY 40165  
John@call-to-post-farms.com  
Cell: 502-639-1994

### **Elgin Cartwright**

245 Sandcut Rd.  
Madisonville, KY 42431  
270-821-4932

### **Mefford Family Farms**

Bettie Mefford  
546 Sulphur Lick Rd.  
Frankfort, KY 40601  
meffhogan@yahoo.com  
Home: 502-227-4819  
Office: 502-227-9855  
Cell: 502-545-0574

### **Honorary Member**

**Roger & Donna Yobestl**  
195 Rocky Hill School Rd.  
Smiths Grove, KY 42171  
dyobestl@scrtc.com  
Home: 270-749-3476  
Cell: 270-535-1442

## **LOUISIANA**

### **Myers Belgian Blues**

Phil Myers  
P.O. Box 294  
Estherwood, LA 70534  
Home: 337-785-0750



# Membership Directory

## **Goss Cattle Company**

Sam & Joani Goss  
19397 Raoul Rd.  
Iona, LA 70647  
samandjoani@yahoo.com  
Home: 337-588-4460  
Fax: 337-588-4226

## **Lazarus Farms**

Gerald W. Jr. or Tonya J.  
Lazarus  
249 Hwy 1041  
Pine Grove, LA 70453  
lazarusfarms@yahoo.com  
Cell: 225-268-0777

## **MAINE**

### **Homestead Farm**

Joylie Gushee  
277 Collinstown Rd.  
Union, ME 04862  
Work: 207-691-1541

## **MICHIGAN**

### **Grice Pharms**

Fred Grice  
528 W. Garfield  
Rothbury, MI 49452  
fred.grice@  
hometownpharmacy.com  
Home: 231-861-5535  
Office: 231-861-8138  
Fax: 231-861-8138

### **Harold E. Shoemaker**

6776 W. Blanchard Road  
Blanchard, MI 49310  
heshof41@yahoo.com  
Phone: 989-561-5590  
989-560-8900

## **MINNESOTA**

### **Frosty Lane Farms**

Lawrence Panek  
17549 220th Ave. NE  
Thief River Falls, MN  
56701  
ljpanek@gmail.com  
Home: 218-681-5703  
Cell: 218-689-0574

**American Belgian Blue - 32**

## **Holder Farms**

Wendy Holder  
5340 Meadowview Road  
Brainard, MN 56401  
jwhbrainard@hotmail.com  
Phone: 218-839-8793

## **MISSOURI**

### **Jim & Dawn Boerding**

5520 N. Hwy 94  
Boerding Farm LLC  
St. Charles, MO 63301  
JDBoerding@msn.com  
Home: 636-250-3248  
Cell: 636-634-1779  
Fax: 636-250-3248

### **Amanda Fields**

4466 Bennett Rd.  
Elk Creek, MO 65464  
hbf.farms@gmail.com  
Phone: 417-824-0978

### **Jim & Sharon Hunt**

5354 S. 20th Rd.  
Walnut Grove, MO 65770  
jshblues@netscape.com  
Home: 417-694-8207  
Cell: 417-399-2906

### **MNP Farm**

Connie & Richard Brooks  
4773 E. Farm Rd. 48  
Fair Grove, MO 65648  
mnpfarm@aol.com  
www.mnpfarm.com  
Home: 417-759-7916  
Cell: 417-840-5464  
Fax: 417-759-7199

### **Tarras Farms**

Thomas Gruenes & Carrie  
Wyrick  
1055 NE Silt Lane  
Spickard, MO 64679  
tarrasfarm@gmail.com  
Home: 660-673-6041  
Work: 320-309-6968

## **MONTANA**

### **Horned Cow Ranch**

John Meschke  
209 3rd Street H.P.  
Glendive, MT 59330  
Phone: 406-365-5437

## **NEBRASKA**

### **Fillingham and Sons Farms, LLC**

John and Doug Fillingham  
30096 Fillingham Drive  
Morrill, NE 69358  
nebraskabelgianblue@  
yahoo.com  
Phone: 308-247-2858

### **Studnicka, Inc.**

Jerry & Sue Studnicka  
47479 786th Rd.  
Loup City, NE 68853  
studnicka@kdsi.net  
StudnickaInc.com  
Home: 308-745-0388  
Office: 866-904-2697  
Cell: 308-440-0768  
Fax: 308-745-0388

## **NEVADA**

Lifetime Member

### **Belgian Blue Organics**

Michelle Labrosse  
502 N. Division St.  
Carson City, NV 89703  
rita.soto@cheetahlearning.  
com  
Home: 775-230-0826

## **NEW YORK**

### **Rolling Winds Farm**

Nathan Wells  
102 E. South St.  
Groton, NY 13073  
backpack74@yahoo.com  
Phone: 607-351-0932

### **Emily Covert**

(Junior)  
1848 Higgins Rd.  
Warsaw, NY 14569

# Membership Directory

## **NORTH CAROLINA**

### **Jonathan Brubaker**

3271 Brubaker Lane  
Asheboro, NC 27205  
johnathanbrubaker@yahoo.com  
Home 336-629-3957  
Cell: 336-465-0702  
Fax: 336-629-2603

### **Tudor Oak Farm**

Harold Brubaker  
215 Back Creek Church Rd.  
Asheboro, NC 27205  
hjbrubaker@yahoo.com  
www.belgianbluefarm.com  
Home: 336-629-4202  
Office: 336-629-5128  
Cell: 336-302-4663  
Fax: 336-629-2603

## **OHIO**

### **Bluescreek Farm Meats**

#### **David & Cheryl Smith**

14141 Hill view Rd.  
Marysville, OH 43040  
bluescreekfarmsmeat@yahoo.com  
Phone: 937-644-3344

### **Paradocs Farm**

Jeff & Deb Williams  
9957 SR5  
Kinsman, OH 44428  
pdf@onecom.com  
Home: 330-876-3118  
Office: 330-876-5555  
Fax: 330-876-0103

## **OKLAHOMA**

### **B Squared Cattle Co.**

James D. or Tamela D.  
Berlin  
398288 W. 1500 Rd.  
Dewey, OK 74029  
James.Berlin@att.net  
Home: 918-534-3018

### **Lloyd and Kellie Capps**

3301 E. 420 Road  
Oologah, OK 74053  
Home: 918-371-1880  
lloyd\_capps@yahoo.com

### **Cedar Creek Belgian Blue Farm**

Ernest Garcia  
9323 S.H. 54  
Thomas, OK 73669  
efgarcia59@yahoo.com  
Home: 580-661-2267  
Work: 580-695-2219  
Fax: 580-661-2269

### **Bobby Clements**

1636 Chickasaw Lake Rd.  
Ardmore, OK 73401  
bobbylements1973@yahoo.com  
Phone: 580-222-4554

### **Nataley Clements (Junior)**

1636 Chickasaw Lake Rd.  
Ardmore, OK 73401  
bobbylements1973@yahoo.com  
Phone: 580-222-4554

### **Deshazo's Farm**

Shirley & Mike Deshazo  
29370 Church House Rd.  
Bokoshe, OK 74930  
shirdesh@hughes.net  
Home: 918-969-2608

### **Steve Dollarhide**

400 Onyx Hill Rd.  
Haworth, OK 74740  
steve@sramERICANbluecattle.com  
www.sramERICANbluecattle.com  
Home: 580-245-2370  
Cell: 870-648-6546  
Fax: 580-286-3753

### **Rachel & Slade**

#### **Dollarhide**

(Juniors)  
400 Onyx Hill Rd.  
Haworth, OK 74740  
Home: 580-245-2370

### **Lane Hull**

(Junior)  
4073 Dickson Rd.  
Ardmore, OK 73401  
Home: 580-223-6082

### **Larry Don & Sandie Hull**

4073 Dickson Rd.  
Ardmore, OK 73401-7825  
Home: 580-223-6082

### **JXJ Farm**

Justin & Amanda Jenkins  
30747 Prairie Bell Rd.  
Keota, OK 74941  
justinjenkins06@yahoo.com  
Home: 918-635-5003  
Cell: 918-635-5003

### **J. Wayne & Tena Kennon**

54301 E. 250th Rd.  
Afton, OK 74331  
Phone: 918-257-5178

### **David & Emilie A. Kraft**

17220 N 97 E. Ave.  
Collinsville, OK 74021  
eclicity@mindspring.com  
Home: 918-371-4723  
Cell: 918-960-4723

### **Matlock Farms**

Wayne & Cindi Matlock  
7160 East 181st St. South  
Bixby, OK 74008  
mrfixit7160@aol.com  
Phone: 918-366-4397  
918-999-8335

# Membership Directory

**Doug and Shelley Muse**

7919 N. Hartford  
Sperry, OK 74073  
Doug.Muse@HP.com  
Home: 918-425-4096  
Work: 918-694-8879  
Cell: 918-694-8879

**Pampered Maiden Farm**

Charles C., Jr. & Linda  
Weddle  
8151 E. Sorghum Mill Rd.  
Edmond, OK 73034-9526  
ccwJr46@aol.com  
Home: 405-340-2618  
Cell: 405-306-6531  
Fax: 405-341-9372

**Don Pippin**

10680 N. 4020 Rd.  
Wann, OK 74083  
pippinfarms@yahoo.com  
Home: 918-534-3967  
Cell: 918-331-6373

**Ross & Carol Weller**

P.O. Box 904  
Skiatook, OK 74070  
Home: 918-396-7612  
Office: 918-596-7879  
Cell: 918-230-7750  
Fax: 918-699-3704

**Triple E Brahmousin****Justin Campbell**

(Junior)  
62800 E 140 Rd.  
Miami, OK 74354  
ok\_boxers@sbcglobal.net  
Phone: 918-641-1544

**Triple E Brahmousin****Amy Elder**

62800 E 140 Rd.  
Miami, OK 74354  
ok\_boxers@sbcglobal.net  
Phone: 918-641-1544

**Triple E Brahmousin****Megan Elder**

(Junior)  
62800 E 140 Rd.  
Miami, OK 74354  
ok\_boxers@sbcglobal.net  
Phone: 918-641-1544

**OREGON****Oak Hollow Belgian Blues**

Karen & Mark Kalsch  
10100 SW Robinson Rd.  
Hillsboro, OR 97123  
kalsch@msn.com  
Home: 503-628-1370  
Cell: 503-349-9053  
Fax: 503-628-1370

**PENNSYLVANIA****Flowing Spring Farm**

Dennis & Denise  
Wolgemuth  
315 Pitney Rd.  
Lancaster, PA 17601  
wolge3@verizon.net  
Home: 717-392-2157  
Office: 717-629-3547  
Fax: 717-656-6011

**TEXAS****Baudoin Farm**

Trent Baudoin  
200 Raintree CT  
Rockwall, TX 75189  
TazBaudoin@hotmail.com  
Home: 214-478-1241  
Work: 214-478-1241

**Clearview Hay and Cattle**

Brooke Logan George  
332 More Rd.  
Big Sandy, TX 75756  
brookegeorge1997@gmail.com  
Home: 903-636-9124  
Work: 903-636-4086  
Fax: 903-636-9071

**Jones Cattle Co.**

Stanley Jones  
P.O. Box 631123  
Nacogdoches, TX 75963  
jonesentltd@sbcglobal.net  
www.bellebrook.com  
Home: 936-564-5581  
Office: 936-564-7889  
Cell: 936-554-8075  
Fax: 936-569-6641

**Tall Tex Beef**

David or Christine Meyer  
1023 Denrock  
Dalhart, TX 79022  
Talltex@xit.net  
Phone: 806-241GRASS  
806-333-5847

**Timber Top Belgian Blues**

Becky Bradshaw  
483 Bradshaw Ranch lane  
Nacogdoches, TX 75964  
beckybradshaw483@yahoo.com  
Home: 936-569-6716  
Office: 936-569-6842  
Cell: 936-615-7507

**BELGIUM**

Honorary Member

**Herd Book Blanc-Bleu Belge**

Pierre Mallieu  
Rue Des Champs Elysees 4  
5590 Ciney Belgium  
pmhbbbbb@skynet.be  
Office: 328-323-0612  
Fax: 328-321-6392

**CANADA****La Gantoise**

Marie J. Goubau  
1489 Concession 1  
Lefavre, ON K0B 1J0  
Canada  
eurogene@hawk.igs.net  
Home: 613-679-4133  
Fax: 613-679-4061  
www.lagantoise.com

# JSH BLUES

**Fullblood Cattle • Percentage Cattle  
Embryos • Project Calves**



**Jim & Sharon Hunt**  
5354 S. 20th Road  
Walnut Grove, MO 65770  
Home: 417-694-8207  
Mobile: 417-399-2906  
E-Mail: [jshblues@netscape.com](mailto:jshblues@netscape.com)

**[www.jshblues.com](http://www.jshblues.com)**

**FOR SALE: FULLBLOOD AND PERCENTAGE  
BULLS, HEIFERS AND FEEDER STEERS**



**European and American Genetics  
Colors from White to Blue to Black**

**"WE CAN HELP YOU WITH THE VERY  
BEST BEEF YOU WILL EVER EAT."**



# KEESEE FARMS

## Belgian Blue Cattle



### For Sale

Bulls & Heifers

¼ Breeds to  
Fullbloods

Semen Available



James & Mary Keese  
870-699-4498

Steve & Tammy Keese  
870-699-4606

215 Peach Street  
Prattsville, AR 72129  
Email: [kzcountry@hotmail.com](mailto:kzcountry@hotmail.com)

# Jones Cattle Company/ Belle Brook Farms



Photos by Andrew D. Brosig/The Daily Sentinel

Belle Brook Farm owner Stanley Jones watches some of his Belgian Blue cross cattle as they pass by in the feed lot on the farm Wednesday in Nacogdoches. Jones began raising the Belgian Blue cattle more than 20 years ago because they produce a leaner, healthier meat. He crosses them with a mix that includes Charolais and Brahman for hardiness, keeping a minimum of 50 percent Belgian to insure the lean breeds through, he said.

**SEMEN AVAILABLE • SPECIALIZING IN BLACK GENETICS**

**ALWAYS READY TO MEET YOUR NEEDS FOR ALL NATURAL BELGIAN BLUE BEEF**

**CALL FOR A FREE CATALOG 1-800-830-2354 AND VISIT OUR**

**WEBSITE [WWW.BELLEBROOK.COM](http://WWW.BELLEBROOK.COM)**

**BETTER FLAVOR • LESS FAT • MORE TENDER**



P.O. Box 631123  
Nacogdoches, TX 75963  
Phone: 936-564-7889  
Fax: 936-569-6641  
Contact: Stanley Jones





# TUDOR OAK FARMS

*"The Nations's Leading Belgian Blue Genetics"*

**OUR HERD IS 100% ELITE STATUS**



**Congratulations to the Steve Dollarhide family for their  
success in showing the offspring sired by  
Tudor Oaks Farms Bulls!!**

***Small Calves, Small Birth Weights!  
Semen and Embryos Available***

Harold, Geraldine, Jonathan & Justin Brubaker  
215 Back Creek Church Road  
Asheboro, NC 27205  
Email: [hjbrubaker@yahoo.com](mailto:hjbrubaker@yahoo.com)  
Cell 336-302-4663

**336-629-4202 • 336-629-2603 Fax**  
**[www.tudoroakfarms.com](http://www.tudoroakfarms.com)**