

# AMERICAN BLUE CATTLE



**2018  
JOURNAL**

[www.americanbluecattle.org](http://www.americanbluecattle.org)



# American Blue Cattle



SRD Alex's Dagger ET



SRD Dagger Too ET



SRD Black Sargent



SRD Black Success ET



SRD Black Jubilee



SRD Black Moon Too

**FULLBLOOD • PUREBRED • PERCENTAGE  
BREEDING STOCK AVAILABLE**

*Quality  
Genetics*

**Steve Dollarhide**  
400 Onyx Hill Rd.  
Haworth, OK 74740  
(870) 648-6546  
<http://www.sramericanbluecattle.com/>  
[steve@sramericanbluecattle.com](mailto:steve@sramericanbluecattle.com)

*Specializing  
in  
Black*



# JSH BLUES

Fullblood Cattle • Percentage Cattle  
Embryos • Project Calves



**Jim & Sharon Hunt**  
5354 S. 20th Road  
Walnut Grove, MO 65770  
Home: 417-694-8207  
Mobile: 417-399-2906  
E-Mail: [jshblues@netscape.com](mailto:jshblues@netscape.com)

[www.jshblues.com](http://www.jshblues.com)

**FOR SALE: FULLBLOOD AND PERCENTAGE  
BULLS, HEIFERS AND FEEDER STEERS**



**European and American Genetics  
Colors from White to Blue to Black**

**"WE CAN HELP YOU WITH THE VERY  
BEST BEEF YOU WILL EVER EAT."**



June 27, 2018

Dear Fellow Blue Breeders:

Once again I am pleased to invite you to the 2018 National Show and annual meeting for the American Blue Cattle Association! The show date is Friday, September 28, 2018 in Tulsa Oklahoma at the Tulsa State Fair Grounds. Be sure to view our website for time, location for our activities and hotel accommodations.

There are a number of items and guest speakers on the agenda for this year's annual meeting. This is a very informative part of the meeting where we can learn new techniques and stay on top with knowledge and move our breed forward to being successful.

I look forward to this time of year with the opportunity to welcome new members and to see old friends. This fellowship is an excellent means of support, networking and knowledge we can all take back home. There is one thing for certain. We all take the "Blues" very serious and have a great passion and joy for the work we do with them.

And as always, "Put a little BLUE in everything we do."

Sincerely,

Harold Brubaker  
President

HJB/pg

## Table of Contents

## Advertisers

Letter from the President.....	2
Feeding the Blues.....	3
Premier Breeder.....	4
Premier Cow.....	4
Premier Bull.....	4
2018 Tulsa Show Agenda.....	5
2017 National Show, Tulsa.....	7-12
Scenes from 2017 National Show.....	13-16
Jr. Highpoint.....	22
Breeding Up to Fullblood Status.....	22
Members Benefits.....	24
Application.....	25
Membership Directory.....	26-30
Jr. Members Benefits.....	31
Annual Scholarship Program.....	32
Registering an Animal.....	32
ABCA American Blues Jr. Awards.....	33
Why the Blues.....	34
Benefits of Crossbreeding.....	34

Black Gold Belgians.....	35
Confertel.....	23
Elmerest Genetics/Kehrli Kattle .....	18-19
Jones Cattle Co./Belle Brook Farms.....	
.....Ins Bk Cov	
JSH Blues.....	1
Keesee Farms.....	36
MNP Farm.....	6
SR American Blue Cattle.....	Ins. Frt. Cov.
Tudor Oaks Farms.....	Bk Cover



## American Blue Cattle

**BREED:** American Blue Cattle

**COLOR:** White, blue roan, or black.

**ANCESTRY:** The American Blue began as the Belgian Blue, which originated in central and upper Belgium when the local red-pied and black-pied cattle were crossed with Durham Shorthorn in the late 1800s. Some Charolais influence during the 19th century is also suggested.

**HISTORY:** Originally a dual purpose breed, beef production became the focus following World War II, when Europe's economy demanded increased beef quality and quantity. During the 1950s, the Belgian cattle underwent a selective genetic breeding and development program conducted by Professor Hanset at the AI Center in the Province of Liege. This program created their unusually heavy muscling.

The first Belgian Blues were imported to the United States in 1978. Today, American Blue Cattle are their own fullblood registered breed, independent from their Belgian relatives after years of

breeding for easier calving, lower birth weights, and improved structural soundness.

**BREED CHARACTERISTICS:** Large framed cattle with exceptional muscling due to an inactive myostatin gene, and therefore high-yielding carcasses. They are known for quiet temperament, early maturity, short gestation, hardy calves, adaptability, excellent feed conversion, and tender lean meat.

**QUALITY AND YIELD:** Yield mostly 1s, grade 80% Select due to lack of marbling, but tenderness overrides the lower grade in taste tests.

**WEIGHT:** Mature fullblood bulls can average up to 2750 lbs., and fullblood mature cows to 1650 lbs. Average birth-weight for fullblood Blues is 96.8 lbs. and 79.9 lbs. for a crossbreed.

**NATIONAL ORGANIZATION AND REGISTRY:** The American Blue Cattle Association located in Nacogdoches, Texas. For more information: Visit the association website at [www.america-bluecattle.org](http://www.america-bluecattle.org) or call 936-652-2550.

### *Feeding the Blues*

The Blues are very unique. Feeding and breeding is the most important concept to keep in mind. From a birth of a full blood calf to raising the young stock is very important. The new born calf must have colostrum within the first few hours of life either from the mother or a commercial mix in a bottle.

As the calf is growing up feeding is important. Free choices of a 16% protein feed and good hay is essential. The normal formula is 3% of body weight would be required. When the calf is weaned, maintain the 3% of body weight rule up until the animal is 24 months of age.

Do not breed the full blood heifers until they are 24 months of age. Full blood bulls are not ready for breeding until they are 24 months of age. The full blood animals do not mature until they are 5 years of age. That is why most breeders breed the heifer to a small out cross such as angus for the first two

calves and then the third calf the cow will be 5 years old.

Feeding the mature animals is very important. Feeding silage or grain up until they are 4 months pregnant is alright. After 4 months only hay, grains and minerals are all you can feed the pregnant full blood. With this program you should avoid any calving difficulties unless a breech birth or a twisted leg. Selenium is important to maintain in their diets.

Half breeds and low percentage can be cared for like any other animal.

Knowing your genetics is extremely important in full bloods and high percentage animals. Make sure you use low birth weight bulls at all times. Some of the old genetics produce large calves so one must stay with proven genetics and low birth weight. There is always the possibility of a genetic mix up that could produce a larger calf.

## 2017 Premier Breeder Black Gold Blues Larry, Sandie and Lane Hull



Black Gold Blues is owned and operated by Larry, Sandie and Lane Hull of Ardmore, OK.

They started their journey in 2008 with their first purchase of Blues from Steve Dollarhide. Since that time they have added to their herd from Stanley Jones, Glenda Sieren and Harold Brubaker.

### 2017 Premier Bull - SRD Alex's Dagger Too ET



**SRD Alex's Dagger Too ET**

SR American Blue Cattle Farm was honored to have raised and shown the 2017 Premier Bull,

The sire of SRD Alex's Dagger Too ET is a British Blue bull named Bal-



leygrange Alex. The dam is Blue Ice. She has produced many progeny and has always had her calves naturally.

SRD Alex's Dagger Too ET is owned and shown by Steve Dollarhide along with his daughter and son in law, Rachel and Derek Anderson.

### 2017 Premier Cow - SRD Blue Ice Too



**SRD Blue Ice Too**

SR American Blue Cattle Farm was extremely privileged to have raised and shown the 2017 Premier Cow, SRD Blue Ice Too. The sire is SRD Alex's Dagger ET which is a full brother to the 2017 Premier Bull. The dam is Blue Ice who is also the dam of the 2017 Premier Bull. To have bred, raised and shown both the Premier Bull and the Premier Cow of 2017 was very special. Owned and shown by Steve Dollarhide along with his daughter and son in law, Rachel and Derek Anderson..



# 2018 Tulsa National American Blue Show

## Tulsa State Fair Grounds

**Arrival:** May begin arrival Wednesday, Sept. 26, 8:00 am  
Must be in place by Thursday, Sept. 27, 12:00 noon

**Show:** Judging begins Friday, Sept. 28, 12:00 noon., in OK Ford  
Dealers Arena 1

**Release:** Will be Sunday September 30  
Must be out by 8:00 pm

**Entry Deadline:** Sept. 1, 2018. All entries must be submitted  
online at [www.tulsastatefair.com](http://www.tulsastatefair.com)

### **HOTEL INFORMATION:**

Courtyard By Marriott Tulsa Central, 3340 S 79th E Ave, Tulsa,  
OK 74145, 918-660-0646. Please mention American Blue  
Cattle Association to get the special rate of \$ 82.00 per night  
plus tax. This year will include a hot breakfast.

### **ANNUAL MEETING, BANQUET AND AUCTION:**

The annual meeting, banquet and auction will be held at  
Oklahoma Joe's BBQ located at 6175 E 61st St. Information  
coming soon on times and menu.



# MNP *Farm*

Richard & Connie Brooks  
4773 E Farm Rd 48  
Fair Grove, MO 65648  
417.840.5464, cell

*Check out our website for more information!*  
[www.mnppfarm.com](http://www.mnppfarm.com)

## MNP *History...*



MNP Blue High Roller  
and bull calf



MNP Blue Axel



Brood cows and calves



MNP Blue Dafydd's Classic



MNP Blue Mystic's Double



MNP Blue Dapper Gentleman  
Halfblood Bull Calf



MNP Blue Raspberry  
Halfblood Heifer Calf



MNP Blue Axel's  
New Influence

*your  
Future.*



Follow us on Facebook



*Lenas Playin Jazcat*

*Lenas Playin Jazcat*  
*Available for the 2019 Breeding Season!*

# 2017 National Show Results

## 2017 TULSA STATE FAIR SHOW RESULTS

### STEERS

*Prospect Low % Steer: 1/2 Bood or Under 400-900 lbs.*

1. HCC Dirt Road Anthem  
Honey Creek Cattle,  
John Wickman

### GRAND CHAMPION

*Prospect Low % Steer*  
HCC Dirt Road Anthem  
Honey Creek Cattle,  
John Wickman

*Market High % Steers Over 1/2 Blood under 15/16 - Over 900 lbs.*

1. DMB Blue Thunder  
Mitchel Taake

### GRAND CHAMPION

*Market High % Steers*  
DMB Blue Thunder  
Mitchel Taake

### FEMALES

*Halfblood Females - February 1, 2017 & After*

1. HCC Dirt Road Darlin  
Honey Creek Cattle,  
John Wickman
2. HCC Dirt Road Dreamer  
Honey Creek Cattle,  
John Wickman
3. 2/S Black Velvet  
Chris Sutton

*Halfblood Females -*

*October 1, 2016 - January 31, 2017*

1. BGB Molly  
Lane Hull

### CHAMPION

*Halfblood Calf*  
BGB Molly, Lane Hull

### RESERVE CHAMPION

*Halfblood Calf*  
HCC Dirt Road Darlin  
Honey Creek Cattle,  
John Wickman

*Halfblood Females -*

*February 1 - May 31, 2016*

1. 2/S Suade  
Chris Sutton

### CHAMPION

*Halfblood Yearling Female*  
2/S Suade, Chris Sutton

*High % Females -*

*February 1, 2017 & After*

1. 2/S Black Diamond  
Chris Sutton
2. 2/S Boo Raie Tay,  
Chris Sutton

*High % Females - October 1, 2016 - January 31, 2017*

1. BGB Maggie  
Cedar Creek Farm

### CHAMPION

*High % Calf*  
BGB Maggie, Cedar Creek Farm

# 2017 National Show Results

## **RESERVE CHAMPION**

### *High % Calf*

2/S Black Diamond, Chris Sutton

### *High % Females -*

#### *June 1 - September 30, 2016*

1. CCW Boot Scooten Princess  
Cedar Creek Farms

## **CHAMPION**

### *High % Yearling Female*

CCW Boot Scooten Princess  
Cedar Creek Farms

### *Purebred/Fullblood Female – February 1, 2017 & After*

1. 2/s Jazzy Raie,  
Chris Sutton  
2. CCW Moon Beam Bluee  
Cedar Creek Farms

### *Purebred/Fullblood Female – October 1, 2016– January 31, 2017*

1. BGB Raven  
Lane Hull  
2. CCW Loving Venessa  
Cedar Creek Farms  
3. SRD Black Ice  
Steve Dollarhide  
4. BGB Suzy  
Lane Hull  
5. BGB Belia  
Lane Hull  
6. EGKK Buss Uncanny  
Resemblance 2  
Wilbur Kehrli

### *Purebred/Fullblood Female – June 1 – September 30, 2016*

1. BGB Dallas  
Lane Hull

2. BGB Rachels Cherry Limeade  
Lane Hull  
3. SRD Newalla  
Steve Dollarhide  
4. BGB Popcorn  
Lane Hull  
5. SRD Black Bell  
Lane Hull  
6. BGB Aria  
Lane Hull

### *Purebred/Fullblood Females - February 1 - May 31, 2016*

1. 2/S Jazzy Jasmine  
Chris Sutton  
2. BGB Sunny Dee  
Lane Hull  
3. EGKK Denali  
Wilbur Kehrli

### *Purebred/Fullblood Female – October 1, 2015 – January 31, 2016*

1. SRD Blue Ice Too  
Steve Dollarhide  
2. EGKK Swagger's Peach-ET  
Mitchel Taake  
3. EGKK Destined to Rain  
Wilbur Kehrli

## **CHAMPION**

### *Purebred/Fullblood Yearling Female*

SRD Blue Ice Too,  
Steve Dollarhide

## **RESERVE CHAMPION**

### *Purebred/Fullblood Yearling Female*

BGB Dallas, Lane Hull



# 2017 National Show Results

**Purebred/Fullblood Female –  
October 1, 2014 - September 30,  
2015**

1. EGKK Skipper Swagger  
Uncanny  
Wilbur Kehrl

**Purebred/Fullblood Female –  
September 30, 2014 or before**

1. MNP Blue Harry's Ms  
Masquerade  
Cedar Creek Farms

## **CHAMPION**

**Purebred Senior Female**  
MNP Blue Harry's Ms Masquerade  
Cedar Creek Farms

## **RESERVE CHAMPION**

**Purebred Senior Female**  
EGKK Skipper Swagger Uncanny  
Wilbur Kehrl

## **GRAND CHAMPION**

**Purebred/Fullblood Female**  
SRD Blue Ice Too,  
Steve Dollarhide

## **RESERVE GRAND CHAMPION**

**Purebred/Fullblood Female**  
MNP Blue Harry's Ms Masquerade  
Cedar Creek Farms

## **BULLS**

**Percentage Bulls –  
February 1, 2017 and after**

1. SKSL HIDALGO OAK  
Steve Kinser

**Percentage Bulls –  
October 1, 2016 - January 31,  
2017**

1. EGKK SS Thunder Bolt  
Wilbur Kehrl

## **CHAMPION**

**Percentage Bull Calf**  
EGKK SS Thunder Bolt  
Wilbur Kehrl

## **RESERVE CHAMPION**

**Percentage Bull Calf**  
SKSL HIDALGO OAK  
Steve Kinser

**Percentage Bulls –  
June 1 - September 30, 2016**

1. 2/S Top Contender  
Chris Sutton

## **Percentage Bulls -**

1. MNP DAFYDD'S Metallic  
Confetti  
Steve Kinser

## **CHAMPION**

**Percentage Yearling Bull**  
MNP DAFYDD'S Metallic  
Confetti  
Steve Kinser

## **RESERVE CHAMPION**

**Percentage Yearling Bull**  
2/S Top Contender  
Chris Sutton

## **Percentage Bulls -**

**October 1, 2014 - September 30,  
2015**

1. BGB Southern Comfort  
Lane Hull



# 2017 National Show Results



## **CHAMPION**

### *Percentage Senior Bull*

BGB Southern Comfort  
Lane Hull

## **GRAND CHAMPION**

### *Percentage Bull*

MNP DAFYDD'S Metallic  
Confetti  
Steve Kinser

## **RESERVE GRAND CHAMPION**

### *Percentage Bull*

EGKK SS Thunder Bolt  
Wilbur Kehrli

### *Purebred/Fullblood Bulls – February 1, 2017 & After*

1. EGKK 55A10  
Wilbur Kehrli
2. 2/S Grey Franchi De  
Chris Sutton

### *Purebred/Fullblood Bulls – October 1, 2016 - January 31, 2017*

1. SRD Alex's Dagger Too ET  
Steve Dollarhide
2. SRD Black Turbo ET  
Steve Dollarhide
3. EGKK SS Tide Changer  
Wilbur Kehrli
4. SRD Dozer  
Steve Dollarhide
5. Jones' Drago ET  
Stanley Jones
6. Jones ET  
Stanley Jones

## **CHAMPION**

### *Purebred/Fullblood Bull Calf*

SRD Alex's Dagger Too ET  
Steve Dollarhide

## **RESERVE CHAMPION**

### *Purebred/Fullblood Bull Calf*

SRD Black Turbo ET  
Steve Dollarhide

### *Purebred/Fullblood Bulls – June 1 - September 30, 2016*

1. SRD Black Major  
Steve Dollarhide

### *Purebred/Fullblood Bulls - February 1 - May 31, 2016*

1. Jones' X-Man's Diablo ET  
Stanley Jones

## **CHAMPION**

### *Purebred/Fullblood Yearling Bull*

SRD Black Major  
Steve Dollarhide

## **RESERVE CHAMPION**

### *Purebred/Fullblood Yearling Bull*

Jones' X-Man's Diablo ET  
Stanley Jones

### *Purebred/Fullblood Bulls – Oct. 1, 2014 – September 30, 2015*

1. BGB Blue Moon  
Lane Hull

## **CHAMPION**

### *Purebred/Fullblood Bulls – Senior Bull*

BGB Blue Moon  
Lane Hull



# 2017 National Show Results



## **GRAND CHAMPION**

### *Purebred/Fullblood Bull*

SRD Alex's Dagger Too ET  
Steve Dollarhide

## **RESERVE GRAND CHAMPION**

### *Purebred/Fullblood Bull*

SRD Black Turbo ET  
Steve Dollarhide

### *Best Pair of Females*

1. 2/S Black Diamond  
Chris Sutton
2. SRD Black Rose  
Steve Dollarhide
3. BGB Bella  
Lane Hull
4. BGB Rachels Cherry Limeade  
Lane Hull
5. HCC Dirt Road Dreamer  
Honey Creek Cattle,  
John Wickman
6. Entries  
Wilbur Kehrli
7. 2/S Jazzy Jasmine  
Chris Sutton
8. 2/S Black Velvet  
Chris Sutton
9. Jones' Daffy  
Stanley Jones

### *Best Pair of Bulls*

1. SRD Alex's Dagger Too-ET  
Steve Dollarhide
2. Jones' X-Man's Diablo ET  
Stanley Jones
3. BGB Blue Moon  
Lane Hull
4. Entries  
Wilbur Kehrli

### *Get - Of - Sire*

1. BGB Rachels Cherry Limeade  
Lane Hull
2. 2/S Boo Raie Tay  
Chris Sutton
3. Entries  
Wilbur Kehrli
4. Jones' X-Man's Diablo ET  
Stanley Jones

### *Produce of Dam*

1. SRD Blue Ice Too  
Steve Dollarhide
2. Entries  
Wilbur Kehrli
3. 2/S Jazzy Jasmine  
Chris Sutton
4. BGB Blue Moon  
Lane Hull
5. 2/S Suade  
Chris Sutton

### *Best of 5 Head*

1. SRD Black Turbo ET  
Steve Dollarhide
2. 2/S Boo Raie Tay  
Chris Sutton
3. BGB Blue Moon  
Lane Hull



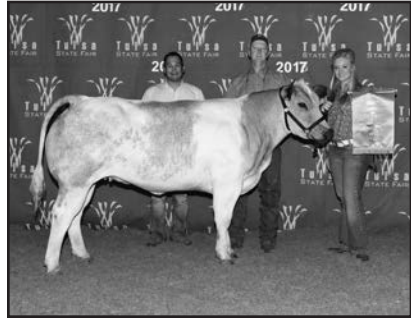




# 2017 National Show Results



**2017 Grand Champion  
High % Bull  
Owned and shown by  
Steve Kinser**



**2017 American Blue National Grand  
Champion Female  
SRD Blue Ice Too  
Owned and showed by  
Steve Dollarhide**



**2017 American Blue National  
Reserve Grand Champion Bull  
SRD Black Turbo  
Owned and shown by  
Steve Dollarhide**



**2017 American Blue National  
Grand Champion Bull.  
SRD Alex's Dagger Too  
Owned and shown by  
Steve Dollarhide**

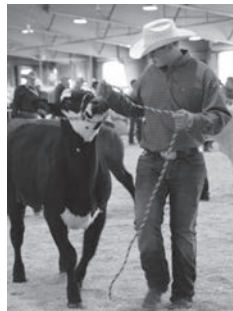
# Scenes from 2017 National Show



# Scenes from 2017 National Show

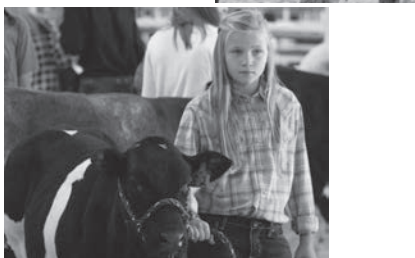
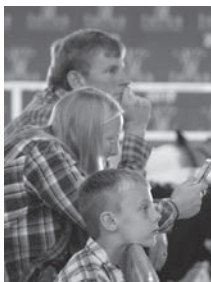


# Scenes from 2017 National Show





## Scenes from 2017 National Show



*Photos by  
Erin Patterson*

# American Blue Cattle



Full blood bull



Full blood bull



Full blood bull



Full blood calf



Full blood bull



Full blood female



Full blood bull



Full blood calf



Full blood female





## SWAGGER 1

**The American Blue 2014 Grand Champion  
& premier bull**



## PALMER'S PRINCESS NATIONAL CHAMPION DAUGHTER

**The American Blue 2015  
Grand Champion female**



## PALMER'S PRINCESS NATIONAL CHAMPION DAUGHTER

**The American Blue 2016  
Grand Champion female**

**Elm  
Gen**



## PALMER'S P

8 generations of natural  
mother of 3 National  
the Tulsa National Show  
Parker/Liberty Cattle  
made a commitment  
percentage of Palmer  
Her genetics are available  
a 2017 bull calf and  
hitting the ground



## SWAGG

**2013 Prem**

Thank you to Art & Brad  
interest in this great s

**Elmcrest  
Genetics**



**Kehrli  
Kattle**



**PRINCESS**

natural calving & the  
National Champions at  
the National Show. Jud & Connie  
Cattle Company have  
acquired and bought a  
copy of Palmer's Princess.  
They are available through  
and embryos will be  
available in 2018.



**PALMER**

15 years old and the final piece to the  
puzzle of Americanized Blue Cattle.

*Our goals at Elmcrest Genetics and Kehrli Kattle are:*

- 1) Raise and share Americanized Blue genetics with our customers.
- 2) Produce more saleable meat on every carcass to help feed our ever growing population
- 3) Produce more profit for our customers who are raising this beef.
- 4) Raise a product that is tender, tasty, lean and healthy for you.

*Give us a call at (563) 920-8494...we love to talk about the Blues!*



**STAGGER II**

**Premier Bull**

Brady for purchasing 50%  
great siring young Blue Bull.

**Elmcrest Genetics**

*Wilbur Kehrli (563) 920-8494*

*wilburkehrli@gmail.com*

**Kehrli Kattle**

*Kyle Kehrli (319) 521-7135*

*kyle.kehrli@hotmail.com*

**www.elmcrestgenetics.com**



# American Blue Cattle



**Full blood calves**



**Half blood calves**



**Full blood calf**



**Half blood calf**



**Half blood calves**



**Half blood calf**



**Half blood calf**



**Half blood calf**

## *Raising American Blue Cattle*

### **Recommendations from experienced breeders:**

American Blue bulls for a cross breeding program we do not recommend putting them on first calf heifers. If you are using them on mature animals you will not see any calving issues that you would not see in any other breed. We have many breeders crossing the blues on multiple other breeds with no calving issues other than the obvious ie: foot back, head turned back, backwards, etc. Raising fullblood American Blue cattle tends to take a little more time and care. Below is some of the things that have been successful for experienced breeders.

- Blues need to be on a continuous very good mineral program that is high in selenium and other minerals if your area has poor nutrients.
- Young females need good nutrition ( 14-16% protein) for the season until they are old enough to breed for their first calf to a low birth weight breed. Some breeders breed them their first 2 calves to a low birth weight breed.
- Breed heifers at approximately 20 - 24mths depending on their size.
- When heifers have bred, taper them off of feed on to grass, hay, and minerals watching body condition until they calf.
- Good body condition is very important and if you need to feed mature animals make sure they are not fed past the 4th month of pregnancy. An occasional hand full just to keep them coming up maybe. If you have extremely high protein grass it may be necessary to dry lot them and feed hay and mineral the last 3 months, again watching their condition. (Don't try and starve)
- When calves are born under stress you can give Multi-Min 90 or just selenium, and banamine, and LA 200 or Nuflur as a precaution for under developed lungs. For buckling legs give added vitamin A & D.
- When calf is born, make sure the calf gets either mother's milk or commercial colostrum with in the first couple of hours, even if you have to give it in a bottle.
- Most breeders feel it is important to feed calves as they are growing to make them reach their full potential.
- Bulls usually are not mature enough to breed until they are approximately 24 months old. American Blue animals do not mature until they are 5 years of age.
- Knowing your genetics is extremely important in full bloods and high percentage animals. Some of the old genetics can produce large calves so one must be selective for low birth weight bulls in their breeding. There is always the possibility of a genetic mix up that could produce a larger calf.
- Household sugar can be used to reduce swelling if a calf has a thick tongue.
- Get heifers or cows back on protein as soon as possible after calving to help with breed back time. Some also give cows a Multi Min 90 shot to help with vitamins and minerals.

## 2017 Jr. High Point Exhibitor



Congratulations to our 2017 Jr. High Point Champion Lane Hull.

Lane is the son of Larry and Sandie Hull of Ardmore, Oklahoma.

Lane is a senior at Dickson High School, and he is currently taking college classes at MSU.

While helping out with the Blues, he loves calving season.

He attends Hensley Jiu Jitsu and Kickboxing. In his spare time, he enjoys playing basketball, swimming and hanging out with his friends.

## Breeding Up To Fullblood Status

**In order to breed up to Fullblood status here are the requirements:**

Fullblood bulls are those that are 96% American Blue and above and will be recorded as Fullblood.

Fullblood Females are those that are 93% American Blue and above and will be recorded as Fullblood.

To be recorded as fullblood the grade up animals must be DNA tested to have two copies of the myostatin gene. If the animal has only one copy they remain in the purebred status.

Purebred Bulls are those that are 15/16 or 93.75% up to 96% American Blue.

Purebred Females are those that are 7/8 or 87.5% up to 93% American Blue.

All Fullblood and Purebred cattle must be DNA tested. If the fullbloods are parent verified from birth by DNA testing, they will have an elite status. Those cattle that are bred up to fullblood status must have all generations of the American Blue lineage verified and have a parent verified status. All purebred cattle with parent and previous generations of American Blue testing will have the status of "Parent Verified".

Percentage animals must be registered in order to be shown, but it is up to the breeder if they want to DNA test these animals or opt out of the DNA testing on any percentage animal up to purebred status.



**Toll-Free Audio Conferencing**

Powered by



**ConferTel**  
ClearValue® Conferencing



**Features You Need  
Quality You Expect  
Service You Deserve**

Dear Members,

We are pleased to announce we have partnered with ConferTel, a leading conferencing service provider. If you are you are looking for easy to use, low-cost phone conferencing provider, ConferTel's 24/7, on-demand and reservationless *ExpressAttendant* provides just the solution.

Some of the features include:

- **Online account management**
- **Visual attendance monitoring**
- **Optional billing codes and custom greetings**
- **Record, replay and transcription**

This service, already used by thousands of businesses worldwide, will help you manage calls with professionalism.

Ready to start? [Follow this link to begin using a reliable, easy-to-use, multimedia conferencing solution anytime, anywhere.](#)

Regards,  
American Blue Cattle Association  
936-652-2550  
[www.americanbluecattle.org](http://www.americanbluecattle.org)

## *American Blue Beef*

### *Healthy & Flavorful*

The final judgment as to the success of a beef breed lies in the hands of you, the consumer. Today's beef consumer is more health conscious than ever before and is increasingly educated about the food and beef industry. American Blue Beef purebred meats have been repeatedly shown to contain less fat, less calories, and less cholesterol than skinless baked chicken breast, while still maintaining all the high nutritional elements for which beef is renowned.

The same genetic trait that results in a healthy meat item also creates a tender, moist, flavorful product as well. A cross-section of American Blue meat will contain more and shorter muscle fibers than traditional beef. This sig-

nificantly contributes to meat tenderness. Since there is minimal fat content, American Blue beef has greater moisture content. These two items together help establish a base for an exceptionally flavorful product.

**Beef up your herd with American Blue Cattle the terminal sire of choice for commercial and dairy herds. Blue Cattle are bred for high yield lean meat with less fat and cholesterol than chicken. Their docile temperament makes them an excellent choice for club calves.**



## Membership Benefits

As a member of the American Blue Cattle organization, the following are some of the many services and programs we offer members.

- Complete Registry
- Youth Program
- Scholarship Program
- State Affiliates
- Listing in the Membership Directory
- Internet Advertisement in the Membership Directory
- Link your site to ABCA
- Listing on the ABCA Website Members Directory
- Free Newsletter and Classified Ads
- Breeder Referrals
- Parent Verification & DNA Testing
- Internet Updates
- Advertising on the Internet
- International Recognition and ABCA is a member of the American Blue International (BBI) Association



*Photos by  
Erin Patterson*



American Blue Cattle  
Application For Membership

American Blue Cattle  
Pam Lee  
P.O. Box 633404  
Nacogdoches, TX 75963  
Telephone 936.652.2550  
Fax 936.569.6641  
info@americanbluecattle.org

---

Applicant Name: \_\_\_\_\_  
Ranch Name: \_\_\_\_\_  
Address: \_\_\_\_\_  
City: \_\_\_\_\_ State: \_\_\_\_\_ Zip: \_\_\_\_\_  
Residence Phone: \_\_\_\_\_ Business Phone: \_\_\_\_\_ Fax: \_\_\_\_\_  
Email: \_\_\_\_\_ Web Site: \_\_\_\_\_  
Signature Of Applicant: \_\_\_\_\_

---

**Membership Choices**

Please Choose One + RANCH REGISTRATION if you would like to register cattle

_____	Lifetime Membership	\$2,500.00	(No Annual Fees)
_____	Active Membership	\$60.00	(Owner of Cattle - Voting Privileges)
_____	Junior Membership	\$35.00	(Must Be Under 21)
	Birth date Required for Junior Membership		
_____	Ranch Registration	\$25.00	(One Time Fee – for members wishing to register cattle)
	Include 3 Choices for Ranch Prefix (3-4 letters)		<input type="text"/>

---

Remittance of \$ \_\_\_\_\_ is enclosed for Membership fee and/or Ranch Registration.  
(\*\* New members, please remember to include the **Ranch Registration** fee if you wish to register cattle.)

---

Return Completed Form and Payment to:

**American Blue Cattle**  
Pam Lee  
P.O. Box 633404  
Nacogdoches, TX 75963

*Application will not be processed until full payment is received.*

## 2017 Officers

### **HAROLD BRUBAKER PRESIDENT**

215 Back Creek Church Road  
Asheboro, NC 27205  
Home: 336-629-4202  
Office: 336-629-5128  
Fax: 336-629-2603  
Email: [hjbrubaker@yahoo.com](mailto:hjbrubaker@yahoo.com)  
[www.bluefarm.net](http://www.bluefarm.net)

### **STEVE DOLLARHIDE VICE PRESIDENT**

400 Onyx Hill Rd.  
Haworth, OK 74740  
Cell: 870-648-6546  
Email: [steve@sramericanbluecattle.com](mailto:steve@sramericanbluecattle.com)  
[www.sramericanbluecattle.com](http://www.sramericanbluecattle.com)

### **STEVE KINSER TREASURER**

986 Rd. 16  
Hugoton, KS 67951  
Home: 620-544-4490  
Office: 620-544-4490  
Fax: 620-544-4490  
Email: [kinsersteve@yahoo.com](mailto:kinsersteve@yahoo.com)

### **ERNIE GARCIA SECRETARY**

10350 Blackberry Springs Rd.  
Guthrie, OK 73044  
Cell: 580-302-4617  
Email: [efgarcia59@yahoo.com](mailto:efgarcia59@yahoo.com)

## Executive Director

### **PAM LEE**

P.O. Box 633404  
Nacogdoches, TX 75963  
936-652-2550  
Email: [belgianblueinfo@yahoo.com](mailto:belgianblueinfo@yahoo.com)  
[www.americanbluecattle.org](http://www.americanbluecattle.org)

## Board Members

### **CONNIE BROOKS**

4773 E. Farm Rd 48  
Fair Grove, MO 65648  
Cell: 417-840-5464  
Fax: 417-759-7199  
email: [info@mnpfarm.com](mailto:info@mnpfarm.com)  
[www.mnpfarm.com](http://www.mnpfarm.com)

### **SANDIE HULL**

4073 Dickson Rd.  
Ardmore, OK 73401-7825  
Home: 580-223-6082

### **STEVE KEESEE**

257 Grant St.  
Prattsville, AR 72129  
Home: 870-699-4606  
Email: [kzcountry@hotmail.com](mailto:kzcountry@hotmail.com)

### **WILBUR KEHRLI**

1596 210th St  
Manchester, IA 52057  
[wilburkehrli@gmail.com](mailto:wilburkehrli@gmail.com)  
Home: 563-920-8494  
Office: 563-927-2982

### **JACOB PATTERSON**

14343 N. 115th Avenue E  
Gilman, IA 50109  
Ph: 641-891-3933

## Membership Directory

### **ALABAMA**

#### **Paul Castleberry**

125 Johns Rd.  
Brewton, AL 36426

### **ARKANSAS**

#### **Edwards Belgian Blue Farm**

Eddie & Lawanna Edwards  
244 Webb Hill Road  
McRae, AR 72102  
[ebbfarms@yahoo.com](mailto:ebbfarms@yahoo.com)  
Home: 501-882-5233

#### **Edwards Blue Brangus Farm**

Kenneth Edwards  
307 Webb Hill Rd.  
McRae, AR 72102  
[kenzroc@yahoo.com](mailto:kenzroc@yahoo.com)  
Work: 501-940-4516

#### **Keesee Farm**

James Keesee  
215 Peach Street  
Prattsville, AR 72129  
Home: 870-699-4498  
Cell: 870-917-8894  
[kzcounty@hotmail.com](mailto:kzcounty@hotmail.com)  
[www.keeseefarms.com](http://www.keeseefarms.com)

# Membership Directory

## **Steve Keesee**

257 Grant St.  
Prattsville, AR 72129  
skeesee@windstream.net  
(home)  
kzcountr@hotmail.com  
(Steve's)  
Home: 870-699-4606

## **Payton Farms**

Bill & Linda Payton  
843 W. Vinity Rd.  
McRae, AR 72102  
Paytonsfarms@yahoo.com  
Cell: 501-517-0884  
Cell: 501-517-2621  
Fax: 501-257-2026

## **SNC Farms**

Charlie Names  
(Junior)  
1215 Little Cut Off Rd.  
Sheridan, AR 72150  
kdnames@windstream.net  
Home: 870-942-7350  
Work: 870-917-5429

## **SNC Farms**

Kelly Names  
1215 Little Cut Off Road  
Sheridan, AR 72150  
kdnames@windstream.net  
Home: 870-942-7350  
Work: 870-917-5429

## **SNC Farms**

Stephen Names  
1215 Little Cut Off Road  
Sheridan, AR 72150  
kdnames@windstream.net  
Home: 870-942-7350

## **COLORADO**

### **Keith Enderson**

53299 County Rd. 104  
Grover, CO 80729  
Ph. 970-371-4825

### **Paul Salazar**

10959 Rd. 28  
Ft. Lupton, CO 80621  
psalazarstriping@yahoo.com  
Home: 970-785-2671  
Cell: 303-435-1413

Fax: 970-785-2671

## **2/S Belgian Blue Cattle**

Mark & Chris Sutton  
12480 County Rd W  
La Jara CO 81140  
belgianblues@yahoo.com  
www.2sbelgianblues.com  
Ph: 928-713-5260

## **FLORIDA**

### **Tammy's Way**

Tammy Bennett  
4253 River Road  
Hilliard, FL 32046  
tammy.bennett@  
evansdelivery.com  
Work: 904-632-2090  
Cell: 904-219-6219

## **IDAHO**

### **9K Ranch**

Gene Lish  
2277 Inkom Rd.  
Inkom, ID 83245  
kidlish@q.com  
Phone: 208-317-3356

## **ILLINOIS**

### **Harold Hall**

1567 Whitley Point Rd.  
Gays, IL 61928

### **Reinhart Farms**

Phil & Jim Reinhart  
9087 E Lincoln Hwy Rd  
Lerna , Illinois 62440  
philc4@consolidated.net  
Home: 217-235-5693  
Cell: 217-273-8693

## **IOWA**

### **Country Line Blues**

Jacob & Kristen Patterson  
14343 N. 115th Avenue E  
Gilman, IA 50106  
pattejac8987@gmail.com  
Phone: 641-891-3933

### **Dry Mill Blues**

Roger & Cindy Taake &  
Family  
23997 250th St.  
Elkader, IA 52043-8092  
rctaake@alpinecom.net  
Home: 563-245-1627

## **Elmcrest Genetics**

Wilbur Kehrl  
1596 210th St.  
Manchester, IA 52057  
wilburkehrl@gmail.com  
www.ELMCREST  
GENETICS/KEHRLI  
KATTLE-Manchester,IA  
Home: 563-920-8494  
Office: 563-927-2982

## **Honey Creek Cattle**

Robert & Tanya Wickman  
John Wickman (Junior)  
2051 155th St  
Manchester, IA 52057  
wickman935@yahoo.com  
563-920-6891 Bob  
563-920-6089 Tanya

## **Kehrli Kattle**

Kyle Kehrl  
2795 0th St.  
Winthrop, IA 50682  
kyle.kehrl@hotmail.com  
www.kountrykens.net  
Phone: 319-521-7135

## **Kountry Blues**

Kenneth or G. Lynne  
McManigle  
107 N. Nelson  
Stanley, IA 50671  
kenscars@netins.net  
Home: 319-634-3768  
Office: 319-634-3788  
Cell: 319-440-1313  
Fax: 319-634-3798

## **Kuntz Brothers Farms**

### **Sunnyside Livestock Farm**

Arthur Kuntz  
4082 170th St.  
Brooklyn, IA 52211  
aandlkuntz@netins.net  
Home: 641-522-7179  
Work: 641-990-1841

## **Liberty Cattle Co.**

Jud & Connie Parker  
903 W. Broadway Ave.  
Fairfield, IA 52556  
Ph. 641-919-9781



# Membership Directory

## **Sterling Parker**

903 W. Broadway Ave.  
Fairfield, IA 52556

## **M & M Patterson Farms, Inc.**

Erin Patterson (Junior)  
14285 N. 115th Ave. E  
Gilman, IA 50106  
Home: 641-498-2224  
Fax: 641-498-7704

## **M & M Patterson Farms, Inc.**

Mark Patterson  
14285 N. 115th Avenue E  
Gilman, IA 50106  
marpat@pcpartner.net  
Home: 641-498-2224  
Cell: 515-419-5129  
Fax: 641-498-7704

## **Pin Oak Blues**

Abby Schieltz (Junior)  
25325 Hwy 52 North  
Holy Cross, IA 52053  
tomschieltz@gmail.com  
Home: 563-590-2229

## **Pin Oak Blues**

Thomas Gerard Schieltz & Family  
25325 Hwy 52 North  
Holy Cross, IA 52053  
tomschieltz@gmail.com  
Home: 563-590-2229

## **Schlichte Petty Cattle Co.**

Cindy Schlichte  
Ty and Kylie Petty  
25002 K42  
Merrill, IA 51038  
bs.cindy@gmail.com  
Cell: 712-540-2639 or  
712-540-9109  
Fax: 712-938-2449

## **Stonewall-Johnson Farm**

Laurie Stonewall  
2114 L Avenue  
Marengo, IA 52301  
319-361-0147

## **KANSAS**

### **Sand Kastle Ranch**

Steve Kinser  
986 Rd. 16  
Hugoton, KS 67951  
kinsersteve@yahoo.com  
Home: 620-544-4490  
Office: 620-544-4490  
Fax: 620-544-4490

## **KENTUCKY**

### **Elgin Cartwright**

245 Sandcut Rd.  
Madisonville, KY 42431  
270-821-4932

### **Kellam Family Farm**

Donna Langsdon Kellam  
6745 Stagecoach Rd.  
Manitou, KY 42436  
Home: 270-322-8323  
Fax: 270-322-8323  
DJLangsdon@msn.com

### **Mefford Family Farms**

Bettie Mefford  
546 Sulphur Lick Rd.  
Frankfort, KY 40601  
meffhogan@yahoo.com  
Home: 502-227-4819  
Office: 502-227-9855  
Cell: 502-545-0574

### Honorary Member

**Roger & Donna Yoebstl**  
195 Rocky Hill School Rd.  
Smiths Grove, KY 42171  
dyoebstl@scrtc.com  
Home: 270-749-3476  
Cell: 270-535-1442

## **MICHIGAN**

### **Henry Grondin**

8833 Sand Rd.  
Brutus, MI 49716  
Ph. 231-539-9986

## **MISSISSIPPI**

### **Todd Vaughn & Michael McKnight**

18031 Hwy 46  
Montpelier, MS 39754  
Cell: 601-540-6397

## **MISSOURI**

### **2/S Belgian Blues**

Christine Sutton  
4515 E 1550 Rd.  
Jerico Springs, MO 64756  
the.suttons04@yahoo.com  
Home: 417-955-2696  
Work: 928-713-5260

### **Jim & Dawn Boerding**

5520 N. Hwy 94  
Boerding Farm LLC  
St. Charles, MO 63301  
JDBoerding@msn.com  
Home: 636-250-3248  
Cell: 636-634-1779  
Fax: 636-250-3248

### **Amanda Fields**

4466 Bennett Rd.  
Elk Creek, MO 65464  
hbf.farms@gmail.com  
Phone: 417-824-0978

### **Jim & Sharon Hunt**

5354 S. 20th Rd.  
Walnut Grove, MO 65770  
jshblues@netscape.com  
www.jshblues.com  
Home: 417-694-8207  
Cell: 417-399-2906

### **LLB Farm**

David & Leslie Beckham  
283 Cumberland Rd.  
Elkland, MO 65644  
Home: 417-759-7581  
Cell: 417-844-5581

### **LLB Farm**

Logan Beckham  
283 Cumberland Rd.  
Elkland, MO 65644  
Home: 417-759-7581  
Cell: 417-844-5581

### **MNP Farm**

Connie & Richard Brooks  
4773 E. Farm Rd. 48  
Fair Grove, MO 65648  
mnpfarm@aol.com  
www.mnpfarm.com  
Cell: 417-840-5464  
Fax: 417-759-7199

# Membership Directory

**Dexten Retchloff (Junior)**  
33 New Hope Rd.  
Fordland, MO 65652

## **Tarras Farms**

Thomas Gruenes & Carrie  
Wyrick  
1055 NE Silt Lane  
Spickard, MO 64679  
tarrasfarm@gmail.com  
Home: 660-673-6041  
Work: 320-309-6968

## **MONTANA**

### **Horned Cow Ranch**

John Meschke  
209 3rd Street H.P.  
Glendive, MT 59330  
Phone: 406-365-5437

## **NEBRASKA**

### **Studnicka, Inc.**

Jerry & Sue Studnicka  
37147 Navaho Rd.  
Ravenna, NE 68869  
jsstudnicka@gmail.com  
Home: 308-745-0388  
Cell: 308-440-0768

## **NEVADA**

Lifetime Member  
**Belgian Blue Organics**  
Michelle Labrosse  
502 N. Division St.  
Carson City, NV 89703  
rita.soto@cheetahlearning.com  
Home: 775-230-0826

## **NEW YORK**

**Emily Covert (Junior)**  
1848 Higgins Rd.  
Warsaw, NY 14569

## **NORTH CAROLINA**

### **Jonathan Brubaker**

Lifetime Member  
3271 Brubaker Lane  
Asheboro, NC 27205  
johnathanbrubaker@  
yahoo.com  
Home 336-629-3957  
Cell: 336-465-0702  
Fax: 336-629-2603

**Miguel Ponce Torres**  
1373 Big Daddy Rd.  
Pikeville, NC 27863  
Phone: 919-223-3181

### **Tudor Oak Farm**

Lifetime Member  
Harold Brubaker  
215 Back Creek Church Rd.  
Asheboro, NC 27205  
hjbrubaker@yahoo.com  
www.bluefarm.net  
Home: 336-629-4202  
Office: 336-629-5128  
Cell: 336-302-4663  
Fax: 336-629-2603

## **OHIO**

### **Bluescreek Farm Meats**

David & Cheryl Smith  
14141 Hill View Rd.  
Marysville, OH 43040  
bluescreekfarmsmeat@  
yahoo.com  
Phone: 937-644-3344

### **Paradocs Farm**

Lifetime Member  
Jeff & Deb Williams  
9957 SR5  
Kinsman, OH 44428  
pdf@onecom.com  
Home: 330-876-3118  
Office: 330-876-5555  
Fax: 330-876-0103

## **OKLAHOMA**

### **James & Elizabeth All- good**

P.O. Box 1911  
Blanchard, OK 73010  
johndeereman428@aol.com  
Home: 405-823-4844

### **Angie Barns (Junior)**

21241 North County Rd  
3216  
Paul's Valley, OK 73075

### **Debi Barns**

21242 North County Rd.  
Paul's Valley, OK 73075  
Phone: 405-207-3632  
debibarns@ymail.com

### **BGB Black Gold Blues**

Lane Hull (Junior)  
4073 Dickson Rd.  
Ardmore, OK 73401

### **BGB Black Gold Blues**

Larry Don & Sandie Hull  
4073 Dickson Rd.  
Ardmore, OK 73401-7825  
Cell: 580-504-1157

### **Lloyd and Kellie Capps**

3301 E. 420 Road  
Oologah, OK 74053  
lloyd\_capps@yahoo.com  
Home: 918-371-1880

### **Cedar Creek Belgian Blue Farm**

Ernest Garcia  
10350 Blackberry Springs  
Rd., Guthrie, OK 73044  
efgarcia59@yahoo.com  
Home: 580-661-2267  
Cell: 580-302-4617  
Work: 580-695-2219  
Fax: 580-661-2269

### **Deshazo's Farm**

Shirley & Mike Deshazo  
29370 Church House Rd.  
Bokoshe, OK 74930  
shirdesh@hughes.net  
Home: 918-969-2608

### **Steve Dollarhide**

400 Onyx Hill Rd.  
Haworth, OK 74740  
steve@sramericanblue  
cattle.com  
www.sramericanbluecattle.  
com  
Cell: 870-648-6546  
Fax: 580-286-3753

### **Rachel & Slade**

**Dollarhide (Juniors)**  
400 Onyx Hill Rd.  
Haworth, OK 74740  
Home: 580-245-2370

### **David Fletcher**

50685 S. 710 Rd.  
Colcord, OK 74338  
dfletch962@gmail.com

# Membership Directory

## Matlock Farms

Wayne & Cindi Matlock  
7160 East 181st St. South  
Bixby, OK 74008  
mrfixit7160@aol.com  
Phone: 918-366-4397  
918-999-8335

## Doug and Shelley Muse

7919 N. Hartford  
Sperry, OK 74073  
Doug.Muse@HP.com  
Home: 918-425-4096  
Work: 918-694-8879  
Cell: 918-694-8879

## Pampered Maiden Farm

Charles C., Jr. & Linda  
Weddle  
8151 E. Sorghum Mill Rd.  
Edmond, OK 73034-9526  
ccwJr46@aol.com  
Home: 405-340-2618  
Cell: 405-306-6531  
Fax: 405-341-9372

## Ross & Carol Weller

P.O. Box 904  
Skiatook, OK 74070  
Home: 918-396-7612  
Office: 918-596-7879  
Cell: 918-230-7750  
Fax: 918-699-3704

## Triple E Brahmousin

Justin Campbell (Junior)  
62800 E 140 Rd.  
Miami, OK 74354  
ok\_boxers@sbcglobal.net  
Phone: 918-641-1544

## Triple E Brahmousin

Amy Elder  
62800 E 140 Rd.  
Miami, OK 74354  
ok\_boxers@sbcglobal.net  
Phone: 918-641-1544

## Triple E Brahmousin

Megan Elder (Junior)  
62800 E 140 Rd.  
Miami, OK 74354  
ok\_boxers@sbcglobal.net  
Phone: 918-641-1544

## OREGON

### Oak Hollow Belgian Blues

Karen & Mark Kalsch  
10100 SW Robinson Rd.  
Hillsboro, OR 97123  
kalsch@msn.com  
Home: 503-628-1370  
Cell: 503-349-9053  
Fax: 503-628-1370

## TEXAS

### Eight of Spades Cattle Co.

Jason Trotter  
901 Spade Hwy  
Anton, TX 79313

### Jones Cattle Co.

Stanley Jones  
P.O. Box 631123  
Nacogdoches, TX 75963  
jonesentltd@sbcglobal.net  
www.bellebrook.com  
Home: 936-564-5581  
Office: 936-564-7889  
Cell: 936-554-8075  
Fax: 936-569-6641

### Kenneth & Tamrah Ruth

292 Wetherby Rd.  
Mountain Home, TX 78058  
kenneth4playcustoms@  
yahoo.com

### Tall Tex Beef

David or Christine Meyer  
1023 Denrock  
Dalhart, TX 79022  
Talltex@xit.net  
Phone: 806-241GRASS  
806-333-5847

## VERMONT

### Double Bow American Blues

William Bricker  
8405 Route 113  
Vershire, VT 05079  
awtb.bricker@gmail.com  
Home: 802-685-0099

## WISCONSIN

### Ava & Eve

**Gruetzmacher (Juniors)**  
N1803 High Ridge Rd.  
Merrill, WI 54452  
Ava 715-212-5486  
Eve 715-218-4628

### Troy Gruetzmacher

N1803 High Ridge Rd.  
Merrill, WI 54452  
Ph. 715-218-5849

### TJ Farms

T. J. Selk  
N7627 County Rd. M  
Willard, WI 54493  
Phone: 715-743-3331

### Thomas Selk (Junior)

N 7627 County Rd. M  
Willard, WI 54493  
Phone: 715-743-3331

## BELGIUM

Honorary Member  
**Herd Book Blanc-Bleu Belge**  
Pierre Mallieu  
Rue Des Champs Elysees  
4  
5590 Ciney Belgium  
pmhbbb@skynet.be  
Office: 328-323-0612  
Fax: 328-321-6392

## CANADA

### La Gantoise

Marie J. Goubau  
1489 Concession 1  
Lefaiivre, ON K0B 1J0  
Canada  
eurogene@hawk.igs.net  
Home: 613-679-4133  
Fax: 613-679-4061  
www.lagantoise.com

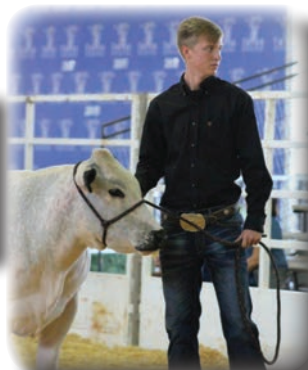
## Junior Member Benefits

Cattle Registrations!



Ken Schlichte  
Memorial College  
Scholarship!

Junior High Point  
Champion & Reserve  
Champion awarded  
yearly



To Join The  
American Blue  
Cattle Association  
PLEASE FILL OUT THE  
MEMBERSHIP  
APPLICATION



More information at  
[www.americanbluecattle.org](http://www.americanbluecattle.org)



## ***Annual Scholarship Program***

To register for our annual scholarship program, download the application from the website: [www.americanbluecattle.org](http://www.americanbluecattle.org) and mail to:

American Blue Cattle  
Association, Inc.  
P.O. Box 633404  
Nacogdoches, TX 75963

### **Criteria for the Scholarship Program**

- Enrolled in a 2 or 4 year college
- Age 18-22
- ABCA Junior Member for a minimum of one year
- Must be a U.S. citizen
- May only receive the scholarship once
- Be a ABCA Junior Member in good standing
- Youth or family own American Blue Cattle

## ***Registering an Animal***

To register an animal go to [www.americanbluecattle.org](http://www.americanbluecattle.org) and print the form and send it to American Blue Cattle at:

American Blue Cattle Association, Inc.  
Phone: 936-652-2550  
P.O. Box 633404  
Nacogdoches, TX 75963

Your registration application will be processed and a blood kit will be mailed as soon as full payment is received. Prices subject to error and change without notice.

### **Tattoo Letters**

2019 Tattoo Letter is "G"  
2018 Tattoo Letter is "F"  
2017 Tattoo Letter is "E"  
2016 Tattoo Letter is "D"  
2015 Tattoo Letter is "C"  
2014 Tattoo Letter is "B"  
2013 Tattoo Letter is "A"  
2012 Tattoo Letter is "Z"  
2011 Tattoo Letter is "Y"

Pay your animal registration fees online: You can now pay your animal registration fees online using PayPal. Use the Registration in Word format - Open the document and type in the information on the application, save it and attach it to an email to [info@belgianblue.org](mailto:info@belgianblue.org). Total your registration fees, click on the pay now button and you will be prompted to enter the donation amount on the PayPal page. We will match the emailed registration with your payment.

### **Animal Registration Fees**

- \* \$25.00 Registration of Fullbloods and Purebreds
- \* \$40.00 DNA Kit
- \* \$15.00 Registration of Percentage Grading-Up (50% To Purebred)
- \* \$15.00 Certification of Percentage (Up To 50%)
- \* \$15.00 Certification of Steers

### **Miscellaneous Fees**

- \* \$10.00 Duplicate Corrected / Additional Certificates
- \* \$10.00 Animal Transfer of Ownership
- \* \$10.00 Embryo Transfer of Ownership
- \* \$10.00 Listing of Foreign Registered Animal in ABCA Herdbook
- \* \$10.00 Entering Foreign Bloodtype or DNA Genotype at UC Davis
- \* \$30.00 Rush charges for any paper work in addition to regular fees

# *ABCA American Blues Junior Awards*

ABCA has developed an awards program for its Junior exhibitors. The purpose of this program is to encourage development of our Junior cattlemen and women and to promote the American Blue breed.

To be eligible for the program the youth should not have reached his/her 21st birthday.

Awards will be given for the top Junior and the Reserve Junior. To be awarded the honor of top Junior, the young man or woman must be a Junior member of ABCA and accumulate points on the following scales. Open show sanctioned for youth points is: Tulsa State Fair - National Show. Cattle must be family or farm owned for at least 30 days prior to the show. Entry must be in juniors' name to qualify for class and overall points.

Showmanship points are only earned at sanctioned shows.

## **National Show Class Placings**

- 30 points 1st Place
- 25 points 2nd Place
- 20 points 3rd Place
- 15 points 4th Place
- 10 points 5th Place
- Additional 30

points Overall  
American Blue  
Grand Champion

- Additional 20 points Overall American Blue Reserve Grand Champion

## **Showmanship**

- 25 points 1st Place
- 20 points 2nd Place
- 15 points 3rd Place
- 10 points 4th Place
- 5 points 5th Place

All other shows, including **county fairs, state fairs, 4-H & FFA, Expos and Open Show Class Placings:**

- 20 points 1st Place
- 15 points 2nd Place
- 10 points 3rd Place
- 5 points 4th Place
- 3 points 5th Place
- Additional 20 points Overall Grand Champion
- Additional 10 points Overall Reserve Grand Champion

## **Rate of Gain**

- 20 points 1st Place
- 15 points 2nd Place
- 10 points 3rd Place
- 5 points 4th Place
- 3 points 5th Place

## **Presentations**

Any display or speech (at least 10 minutes in length) that promotes the Blue breed.

- 1-10 people 20 points
- 11-50 people 30 points
- 51+ people 40 points

Presentations must be verified in writing by person in charge of event such as FFA Advisor or 4-H Leader. Displays/presentations points can only be earned at one event at each fair.

Points are accumulated beginning in January and must be turned into the ABCA office by December 15.

Juniors may show any number of head at each show but points will only accumulate for four head.

## **Verification**

To receive points the junior exhibitor must submit verification in the form of show results signed by the show superintendent or show results intended for public knowledge such as photos or articles in the media.

Send by December 15 to : American Blue Cattle Assoc., Pam Lee, P.O. Box 633404, Nacogdoches, TX 75963.

## *Why the American Blues?*

- Extraordinary muscle development
- Great tenderness of the meat due to the thinness of the muscle fiber
- Extremely lean, tender and healthy beef
- Genetically tender beef without the fat cover and marbling
- Higher percentage of quality cuts
- More quality cuts in the forequarter
- Cattle have a docile temperament
- Short gestation length
- One of the highest yielding carcasses with dress out of 68%-72%
- Compliment to any crossbreeding program
- Great terminal sire breed

## *Benefits of Crossbreeding*

Beef producers have been benefiting when using a Belgian Blue bull as a terminal cross sire. Belgian Blue crossbred calves result in increased carcass yield as compared to the dam. The Belgian Blue bull will put more weight and muscle on the calves' frames.

Butchers will also pay premium prices for both steers and heifers knowing there will be a high yield and more saleable.

### **Overall benefits of crossbreeding:**

- High growth rates
- Early turnoff
- Outstanding feed conversion rates
- Outstanding dress percentages 60% +
- High yield
- Market preferred
- Butcher preferred
- Premium prices



# BGB

# BLACK GOLD BLUES



Larry, Sandie & Lane Hull

(580) 504-1157

4073 Dickson Rd. • Ardmore, Oklahoma 73401

[larrydhull1963@hotmail.com](mailto:larrydhull1963@hotmail.com) • [sandiehull@yahoo.com](mailto:sandiehull@yahoo.com)



# KEESEE FARMS

## American Blue Cattle



For Sale

Bulls & Heifers

¼ Breeds to Fullbloods

Semen Available

James & Mary Keesee  
870-699-4498

Steve & Tammy Keesee  
870-699-4606

215 Peach Street  
Prattsville, AR 72129  
Email: [kzcountry@hotmail.com](mailto:kzcountry@hotmail.com)

# Jones Cattle Company

## Belle Brook Farms



Photos by Andrew D. Brosig/The Daily Sentinel

Belle Brook Farm owner Stanley Jones watches some of his Belgian Blue cross cattle as they pass by in the feed lot on the farm Wednesday in Nacogdoches. Jones began raising the Belgian Blue cattle more than 20 years ago because they produce a leaner, healthier meat. He crosses them with a mix that includes Charolais and Brahman for hardiness, keeping a minimum of 50 percent Belgian to insure the lean breeds through, he said.

**SEMEN AVAILABLE • SPECIALIZING IN BLACK GENETICS**

**ALWAYS READY TO MEET YOUR NEEDS FOR ALL NATURAL AMERICAN BLUE BEEF**

**CALL FOR A FREE CATALOG 1-800-830-2354 AND VISIT OUR**

**WEBSITE [WWW.BELLEBROOK.COM](http://WWW.BELLEBROOK.COM)**

**BETTER FLAVOR • LESS FAT • MORE TENDER**



P.O. Box 631123  
Nacogdoches, TX 75963  
Phone: 936-564-7889  
Fax: 936-569-6641  
Contact: Stanley Jones





# TUDOR OAK FARMS

"The Nation's Leading American Blue Genetics"

**OUR HERD IS 100% ELITE STATUS**

Introducing Our New Genetics to the US Market from  
the British Blues

## **TOF Chanel Artic ET** **Elite**



#X-3304 Frerot DeBelle Eau

#I-20030204 Tartas De Remichampagne

#X-5602 Noella De Remichampagne

**Sire:** B-20050683 Greystone Artic (SR)

#I-951414 Cyrano Du Stordeur

#B-951326 Greystone Magnolia

#B-870435 Greystone Emerald

#I-981252 Valide D' Al Gote

#B-20041302 Greystone Warrior

#B-980598 Greystone Plum

**Dam:** #H-20070644 Greystone Chanel

#I-990316 Adagio Du Stordeur

#H-20011114 Greystone Tamara

#H-980597 Greystone Parkie

**Small Calves, Small Birth Weights!**  
**Semen and Embryos Available**

Harold, Geraldine,  
Jonathan, Megan, Grant, Justin & Vi Brubaker  
215 Back Creek Church Road  
Asheboro, NC 27205  
Email: [hjbrubaker@yahoo.com](mailto:hjbrubaker@yahoo.com)  
Cell 336-302-4663  
**336-629-4202 • 336-629-2603 Fax**  
[www.bluefarm.net](http://www.bluefarm.net)

